



SOLUS
CERAMICS

quarter

Supplying your imagination

Issue 5

INTERACTIVE
DIGITAL
VERSION



JOHN LEWIS

A grand opening in Birmingham

Take an exclusive tour of John Lewis' new store in the Grand Central shopping centre in the heart of Birmingham's New Street Station development.

THE ROYAL OAK
PROJECT

CHALAYAN
PROJECT

GEOMETRY
WALL COLLECTION

FORMAT
ESSENTIAL COLLECTION



16



38



04



22



46



10



32



52



28



42



58



64

quarter⁷

Supplying your imagination

Chairman

PETER BENTLEY
peterbentley@solusceramics.com

Managing Director

MARCUS BENTLEY
marcusbentley@solusceramics.com

Finance Director

RYAN BENNETT
ryanbennett@solusceramics.com

Sales and Marketing Director

STEPHEN BAKER
stephenbaker@solusceramics.com

Director and Midlands sales

GEORGE HOGAN
georgehogan@solusceramics.com

London sales

HANNAH CONWAY
hannahconway@solusceramics.com

JO BURLEY
joburley@solusceramics.com

JOHN ROSE
johnrose@solusceramics.com

MARK AYLIFFE
markayliffe@solusceramics.com

MICHAEL IRVINE
michaelirvine@solusceramics.com

PETE TOULE
petetoule@solusceramics.com

East Midlands and Oxfordshire sales

ZOE SYROKA
zoesyroka@solusceramics.com

Midlands sales

MARK WRIGHT
markwright@solusceramics.com

North sales

DAVID OVERTON
davidoverton@solusceramics.com

Wales and South West sales

RICHARD BARON
richardbaron@solusceramics.com

The Creative Centre sales

NICOLA HELLETT
nicolahellett@solusceramics.com

Editor

PAUL SHEPHERD
paulshepherd@solusceramics.com

Designer

RICARDO JARDIM
ricardojardim@solusceramics.com



Head Office & Tile Studio

Unit 1, Cole River Park,
285 Warwick Road
Birmingham, B11 2QX
0121 753 0777
sales@solusceramics.com

The Creative Centre Showroom

9 Baker Street,
London, W1U 3AH
020 7935 7355
thecreativecentre@solusceramics.com

CONTENTS

- 04** Dimensional, new range. Futuristic, abstract tiles
- 10** John Lewis. Explore their Birmingham store
- 16** Prototype, new range. Bold striped design
- 22** Inn On The Square. A luxurious hotel in the Lakes
- 28** Geometry, new range. Exclusive chevron shaped range
- 32** Chalayan. A contemporary retail experience
- 38** Framework range. Cool concrete style
- 42** Format, new range. A future trend
- 46** The Royal Oak. Iconic Arsenal hospitality
- 52** Conqueror, new range. A chic and elegant series
- 58** Lesoco. Award winning college project
- 64** Horizon range. Expressive large format tiles
- 70** Printed tiles. Create bespoke custom designs
- 74** Solus Ceramics CPD. Free seminars for you to experience

Choose
an article or
click any image
on left page

Editor's letter



PAUL SHEPHERD
editor

AN ANNIVERSARY OF SORTS, this new edition of Quarter marks a year since our very first issue and Solus Ceramics' 20th year in business. As always we are looking to continually improve and build upon the magazine and we hope that you appreciate the evolution of the publication and can see how far we have come!

Following our annual visit to Cersaie the international exhibition of ceramic and bathroom furnishing in Bologna Italy in September, we have added some fabulous new products to our portfolio. These trendsetting tile ranges form the basis for our 2016 product showcase, and are sure to inspire your future design projects.

With a huge team spread all across the UK, we are very keen to show you the breadth of our project work. In this issue we focus on commercial projects that we have supplied vast quantities of tiles to. Ranging from the new John Lewis store in Birmingham, to Arsenal FC's new hospitality area, and a beautiful hotel in the heart of the Lake District, this issue is full of fantastic and inspiring architectural and interior projects.

Paul Shepherd

Folium 5EDD108, Agnesi 5EDD106

NEW RANGE
WALL COLLECTION

DIMENSIONAL

A FUTURISTIC AND
INNOVATIVE NEW TILE RANGE



STEP INTO THE FUTURE OF WALL TILE DESIGN

Dimensional, a trendsetting new decorative tile range in Solus Ceramics' dynamic portfolio, is set to take the design world by storm with its innovative concept and eye-catching appeal.

The unusual and expressive wall tiles feature futuristic three-dimensional designs and are available in a chic core palette of grayscale colours including white, off-white, grey and black.

In addition to flat gloss and matt 250x250x9mm tiles, the range also includes abstract and bold geometric relief tiles that are incredibly tactile and visually arresting.

These 250x250mm 3D tiles range in thickness from 9mm to 20mm depending on the shape of the featured design and can be used to create regular repeated patterns or complex patchwork arrangements.

An imaginative decoration, the relief tiles in this range have a space age appeal with inspirations drawn from futuristic and conceptual architectural ideals.

A totally transformative product, Dimensional can be clad to interior wall surfaces to create unbelievably dramatic focal features in both residential and commercial projects. From a hotel reception feature wall to a stunning bedroom design, Dimensional provides designers with a new way of creating texture and movement.

In addition to the central monochrome colours, the range also includes two gold and two silver metallic relief options. These satin finish reflective tiles share the same basic design as the core colours, yet feature interesting textures on some sides of the three dimensional ridges. Scored lines and speckled grains add additional interest and texture, and could be used to provide a sparkle of glamour in a muted design scheme.



Create amazingly abstract feature wall designs



Stephen Baker
Solus Ceramics Sales and Marketing Director
stephenbaker@solusceramics.com

“
A totally unique and dynamic range,
Dimensional is more than just a tile range, it is
a unique, dramatic and architectural surface
finish.

Whether used in small amounts or large
expansive places, the tiles create an eye-
catching focal point in any space.

The space age, contemporary design is
perfect for creating clean, crisp and futuristic
design aesthetics.”

**Providing the freedom
to mix and match shape
and colour**



DIMENSIONAL FINISHES, COLOURS AND SIZE:

Matt, Satin and Gloss finishes are available for this range. Please ask for details.

[click here for more information
about the Dimensional range](#)



Bicorn 5EDD101	Conic 5EDD102	Fermat 5EDD103	Bolza 5EDD104	Limacon 5EDD105
Agnesi 5EDD106	Deltoid 5EDD107	Folium 5EDD108	Epispiral 5EDD109	Catenary 5EDD110
Bezier 5EDD111	Neilsen 5EDD112	Torus 5EDD113	Gyroid 5EDD114	Saddle 5EDD115
250x250mm	Rauzy 5EDD116	Ikeda 5EDD117	Gosper 5EDD118	Rossler 5EDD119



John Lewis
PROJECT



JOHN LEWIS

P R O J E C T

A grand opening for Birmingham

Located in the heart of Birmingham’s new Grand Central shopping centre, John Lewis is one of Solus Ceramics’ largest retail projects to date and offers more than 170,000 square feet of selling space.

The store, which opened its doors in September, sits above New Street Train Station and is a sizable part of the £750m redevelopment of the area. It is also John Lewis’ largest new development in four years.

The four level department store has a strikingly modern design and offers many new services and concepts, including a fashion and lifestyle department and the first John Lewis-branded spa.

Solus Ceramics, who have a long-standing relationship with the well-loved brand, supply tiles to all of their new and refurbished stores around the UK, and were delighted to once again work with John Lewis on this project.

The Birmingham based tile supplier, provided more than 20,000m² of floor tiles to the expansive store, with the material being used in almost every shopping zone. 600x600mm tiles were selected from the Tumulus 1 range, which was chosen due to the rich colouration and excellent technical properties.

The Tumulus 1 range, which is inspired by crisp and clean polished concrete, is available in 10 neutral and natural themed colours and provides a solid level of slip resistance.



A contemporary and clean retail aesthetic



Cream coloured tiles greet visitors at the entrance

Lurda 3CME112



Oehme 3CME107

The John Lewis team used a grey option throughout the majority of the store and also selected a contrasting cream tile for use in pivotal areas such as the main entrance. The differing tile colours perfectly denote the specific zones of the department store floor area, giving shoppers a visual aid to path finding.

A spokesperson for John Lewis said: “There has been so much talk of John Lewis opening that we really wanted to make sure we brought our latest and greatest ideas to Birmingham.”

600x600mm tiles were used throughout the main shopping zones



Colour is used to differentiate zones

Lurda 3CME112, Oehme 3CME107



Michael Irvine
Solus Ceramics Area Sales Manager
michaelirvine@solusceramics.com

“*Tumulus 1 is a smart, contemporary and timeless range that offers reliable quality that is perfect for a busy retail environment.*

The dual use of both a grey and beige tiles is particularly stylish and helps to clearly define the different zones of the store.

The scale and scope of the project shows that Solus Ceramics have the experience and skill to meet the demands of extensive commercial projects.

”

John Lewis
PROJECT

 [click here for more information](#)

NEW RANGE
WALL COLLECTION

PROTOTYPE



A BEAUTIFULLY ILLUSTRATED, GRAPHIC RANGE

A new wall range, Prototype offers boundless possibilities to designers who are looking to create dynamic and graphic wall surface designs.

Central to the range are a variety of thick and thin striped tiles that are available in an arresting choice of black, yellow or grey. Designed to be used together or independently, ambitious designers can let their imagination go wild with these candy striped tiles.

Complementing these striped options are a variety of geometric lined tiles that echo the look of electrical computer circuits. Mixing the three core colour shades, these unusual and innovative tiles are supplied in sets of seven different designs and can be used to produce stunning, patchwork feature walls.

Although centred on a geometric aesthetic, it should be noted that the lines depicted on the tiles are not rigid and perfect, but possess slightly rustic and hand drawn characteristics.

In addition to the geometric style designs, Prototype also includes some artistic, natural themed options including tiles that depict tied twine, sitting birds and a motif inspired by camouflage patterns. When ordered, the tied twine tiles are supplied as a set of four different designs.

All of the tiles in this range are available in the same size format, 250x750x10.5mm, and can be used together effectively within the same scheme, if the calibrations are the same. With a stunning gloss finish, the tiles in the Prototype range have a luxurious, shiny and luminous quality, radiating and reflecting light in the area that they are applied.

A huge variety of candy striped design options





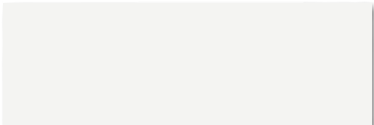







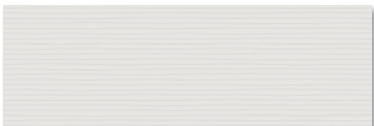


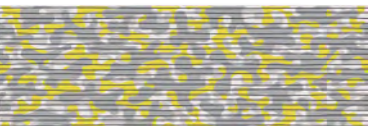
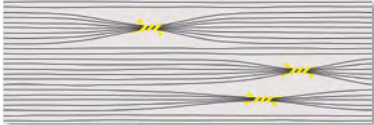
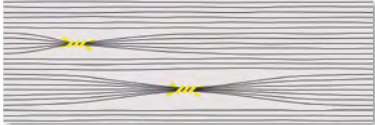

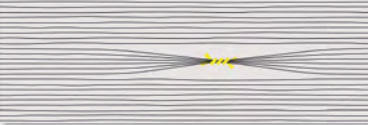
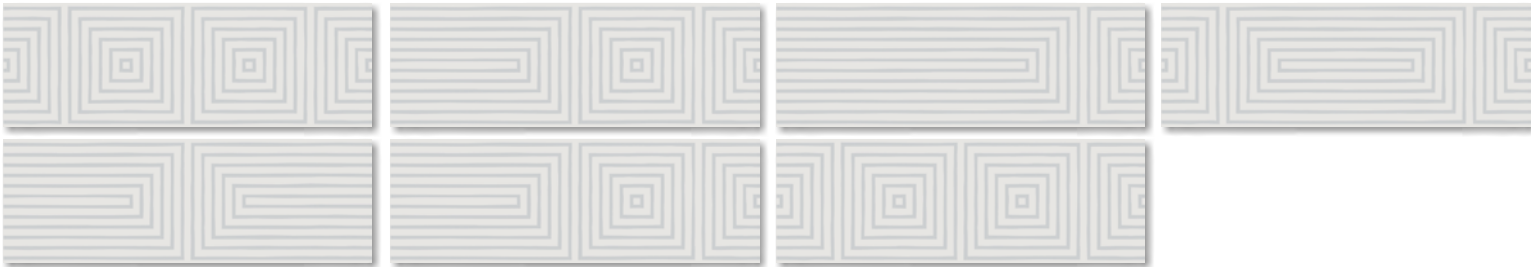
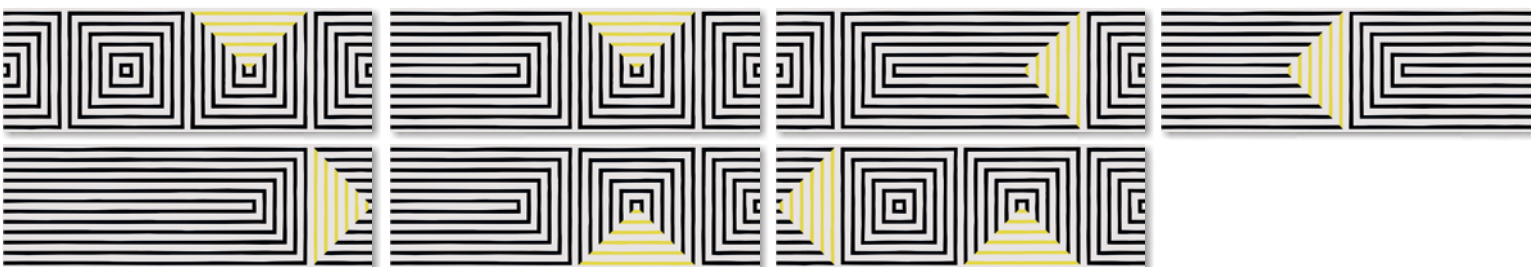
These unusual bird themed tiles provide an artistic aesthetic



PROTOTYPE FINISH, COLOURS AND SIZE:

All colours available in a **Glossy** finish. All tiles are **250x750mm**.

[click here for more information about the Prototype range](#)

 Belyars 5LYD501	 Whesly 5LYD502	 Corva 5LYD503	 Pannier 5LYD504
 Laity 5LYD505	 Fuone 5LYD506	 Knille 5LYD507	 Steeple 5LYD508
 Venton 5LYD509	 Hendran 5LYD510	 Dauben 5LYD511	 Ashley 5LYD512
Decors			
 Pydar 5LYD515d103			 Please note this pattern comes in a box of 4 different pieces
			
Eliote 5LYD513d101 Please note this pattern comes in a box of 7 different pieces			
			
Morlaix 5LYD514d102 Please note this pattern comes in a box of 7 different pieces			



INN ON THE SQUARE PROJECT



INN ON THE SQUARE

P R O J E C T

Contemporary Lake District hotel design

Combining chic Scandinavian design with a love of all things Cumbrian, Inn on the Square in the charming market town of Keswick, is an imaginative and welcoming hotel offering laid back luxury with a hint of urban cool.

Formerly known as The Queen’s Hotel, the property has been completely renovated by the family owned and run Cumbrian hotel group, Lake District Hotels Ltd.

Offering 34 modern bedrooms, a chic lounge bar and the Lake District’s first dedicated Steakhouse, the hotel which is based in the heart of the Lake District, is the only four star hotel in Keswick.

Designed by the team at Frank Whittle Partnership, Inn on the Square features many of Solus Ceramics’ most on trend and exciting tile ranges.

In the eclectic lounge area, which is populated with modern, Scandinavian inspired furniture and elaborate and impressive lighting features, Solus Ceramics supplied tiles to a modern, monumental fireplace.

Monolithic, large format tiles from the innovative Replicate range, which combine the textures of concrete and rusted metal, were fixed to the exterior of the large chimney breast.



The beautiful rusted effect tiles help to create a warm and cosy yet modern ambience



David Overton
Solus Ceramics Area Sales Manager
davidoverton@solusceramics.com

“A fantastic project that used a wide variety of our most on trend materials, Inn on the Square is a triumph of design ingenuity and high quality fixtures and fittings.

The large 750x1500mm format chimney tiles in particular look stunning and provide a modern yet rustic ambience to the space.

Fixed with adhesive and mechanical supports, this design could work well in any type of commercial or residential project- creating a simple yet eye-catching focal point.



PROJECT

[click here for more information.](#)

The rustic, rusted tones of the tiles perfectly complement the luxurious colour scheme, and benefit from the roaring glow from the flickering fire below.

In addition, Solus Ceramics also supplied tiles to all of the en-suite bathrooms in the guest rooms. Echoing the European style featured elsewhere in the hotel, the bathrooms were fitted with chic wood effect floor tiles from the Boardwalk range, bright white wall tiles from the Storm range, and iridescent, bronze flecked blue mosaics from the Murano range.

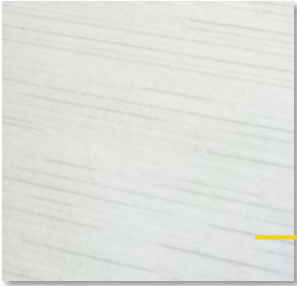
The large format tiles were applied to the grand and opulent fireplace



Metallic flecked mosaics

The amazing Murano range is a dynamic mosaic product that features bold glassy colours layered with iridescent highlights.

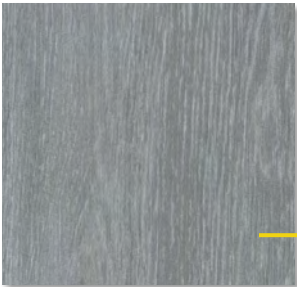
Taranto 6PIN528



Brilliantly bright, white wall tiles

A perfect product for bathrooms, these bright white tiles are infused with grey flecks and a slight texture, echoing the look of wood.

Bisiam 3LWN509



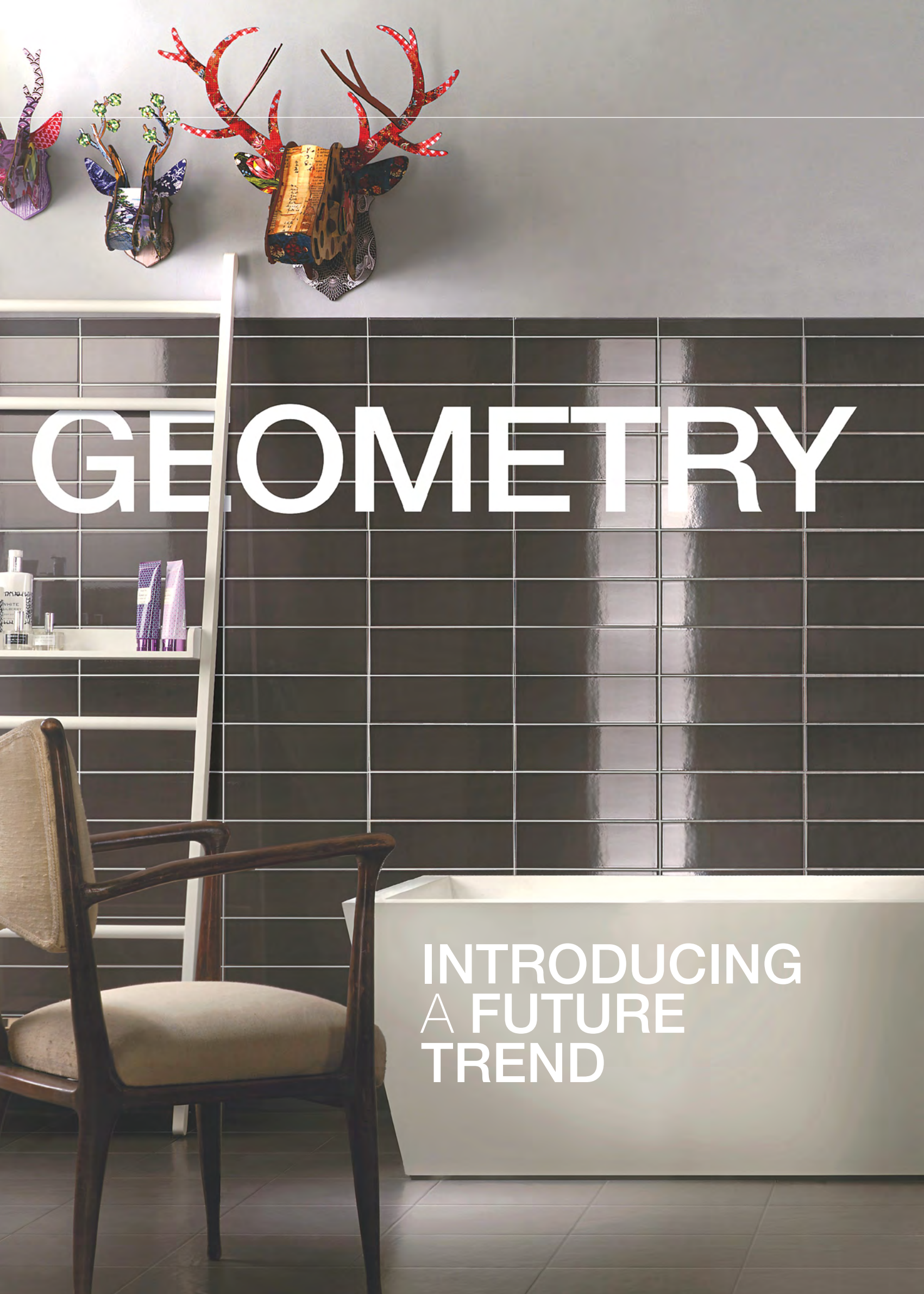
Replicating the look of wood

Perfect for bathroom use, boardwalk provides the look of wood, but with the strength, durability and non-porous nature of porcelain.

Powhatton 3VOW507



Effortlessly chic en-suites provide guests with a luxurious experience



GEOMETRY

INTRODUCING
A FUTURE
TREND

NEW RANGE
WALL COLLECTION





SIMPLY EFFORTLESSLY HERRINGBONE STYLE

Exclusive to Solus Ceramics, Geometry is a stunning range of rhombus shaped wall tiles that was launched in late November 2015.

A desirable and en vogue pattern, the herringbone design is one of the most popular current concepts in the architectural and design industry.

Solus Ceramics are no stranger to supplying bespoke cut tiles to be used to create herringbone patterns, yet Geometry is their first original range that has been created for the sole purpose of creating these fashionable patterns.

The rhombus shaped tiles effortlessly and easily fit together to create dynamic arrow designs, amazing zig-zag patterns and many more exciting creations.

Geometry is made up of seven core colours, including greys, beiges and browns, with each colour available in both a silk and satin finish. The difference between the finishes is subtle but important. The silk finish tiles have a very smooth and glossy shiny surface, whereas the satin finish tiles have a slightly matt finish.

The tiles are produced in two formats, module A and module B, which each measure 230x50x8mm but are mirrored. When ordered, the user will receive an equal amount of module A and module B pieces, which allow you to create the symmetrical designs.

The possibilities are truly endless with the Geometry range. You could use a single colour; mix and match different colours; create your own repeated pattern; or even even mix and match different finishes.

GEOMETRY FINISHES, COLOURS AND SIZE:

Available in **Silk** and **Satin** finishes. All tiles are **50x230mm**. Please call for more details.

[click here for more information about the Geometry range](#)

Silk finish



Taishi 5ACH101



Einar 5ACH102



Lubui 5ACH105



Laxman 5ACH106



Karna 5ACH103



Jumong 5ACH104



Ravan 5ACH107

Satin finish



Santos 5ACH108



Lorig 5ACH109



Wukie 5ACH112



Folkard 5ACH113



Elzinga 5ACH110

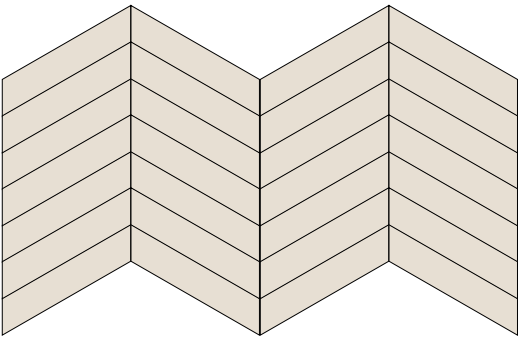


Lindsey 5ACH111

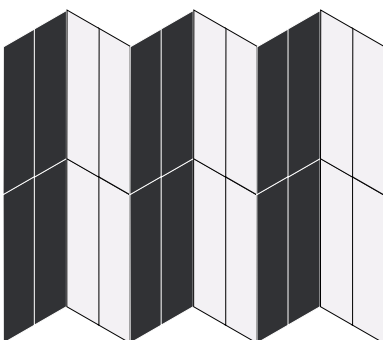


Cerna 5ACH114

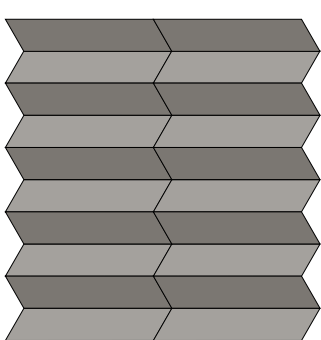
Laying pattern suggestions



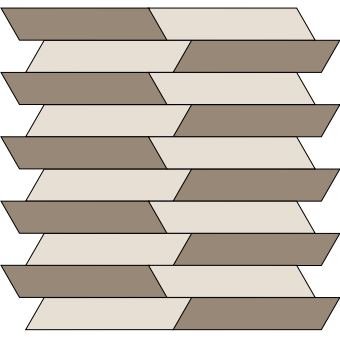
Pattern 1



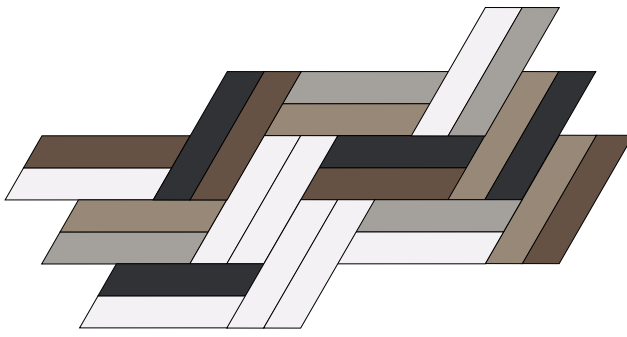
Pattern 2



Pattern 3



Pattern 4



Pattern 5



Pattern 6

Shown are some example laying patterns. Mix colours and finishes to create a huge variety of eye-catching designs.



Chalayan
PROJECT



CHALAYAN

P R O J E C T

Contemporary and inspiring retail design

Located at 2 Bourdon Street in London’s Mayfair district, Chalayan is the first London based retail store of the acclaimed fashion designer Hussein Chalayan.

ZCD Architects, who designed the store in collaboration with Hussein Chalayan and his team, based the design of the store on the concept of ‘a shop within a shop’, and the notion of stepping into another world.

The minimal design, punctuated by two objects- a transformative black boat hull table and a slick black cash desk with digital timer set flush into its surface, define the sleek ambience of the space.

White and black floor tiles by Solus Ceramics complement stark white walls, a bright, luminous lighting arrangement and an architectural black frame that wraps around the interior of the store.

Drawn from the luxurious Porcelain Solid Basics range, the floor tiles were bespoke crafted from existing 600x1200mm large format tiles into unique triangle shaped tiles. The process, which involved advanced water jet cutting technology, was managed by the team at Solus Ceramics, and delivered to the exact specifications required by the designers.

White triangles were laid predominantly across the main floor area of the store, whilst black triangles were fixed near to the entrance.





This innovative scheme creates a defined entrance threshold marking the zone between the street and the shop.

An interesting and innovative format, the triangle tiles echo the design language that the architects have developed over the past 10 years whilst working alongside Chalayan.

In addition to being a retail environment, the space has also been designed to work as an event space for shows, talks and performances.

Large format, rectangle tiles were cut into unique triangle shards.



Pete Toule
Solus Ceramics Area Sales Manager
petetoule@solusceramics.com


“The tiles were carefully selected based on the large format standard size to allow the most economical cuts, the crispness of the white and the depth of the black. The design called for a stark contrast between black and white and some careful calculations to achieve the largest format from the tiles whilst minimising cost of cutting and of waste material.

The very tip of the triangles was removed to add strength to the tiles in the finished installation, without detracting from the design.

I always enjoy the more intricate projects and in this case having worked closely with our cutting department and the designers throughout I am personally very proud to have been involved in the project.

”

Chalayan
PROJECT

 [click here for more information.](#)

FRAMEWORK

AUTHENTIC CONCRETE SLABS FOR FLOORS AND WALLS

ESSENTIAL COLLECTION



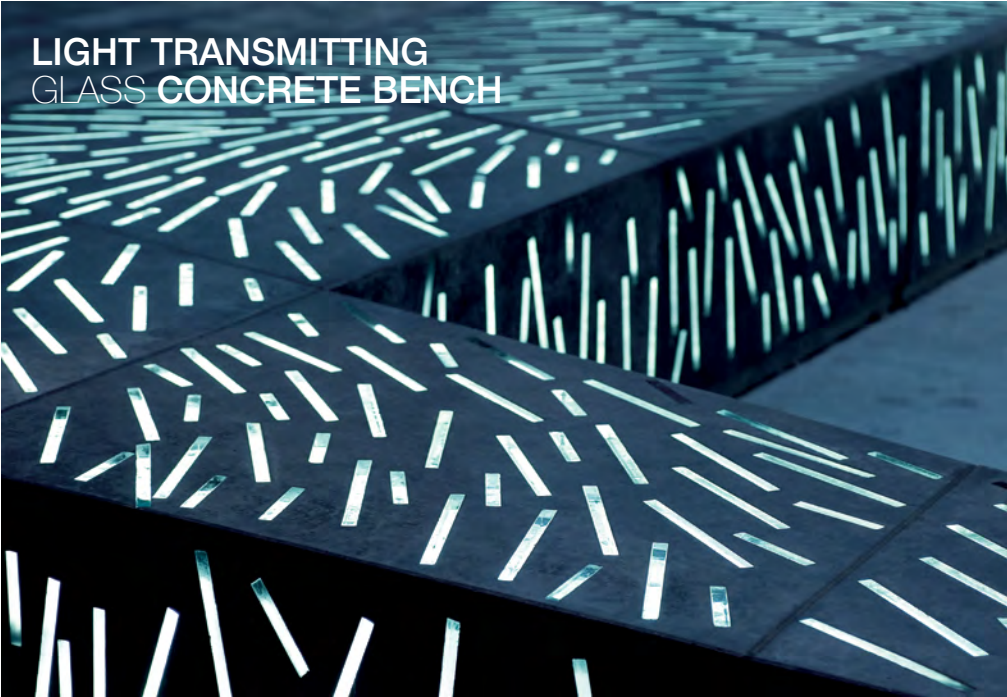
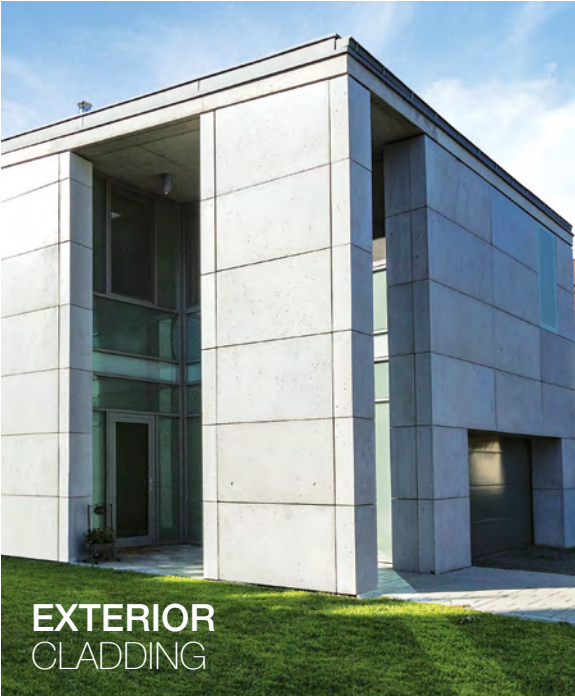
Framework is an inspiring range of cast-concrete wall and floor coverings that capture the textures, detail, visual patterns and tonal essence of authentic concrete.

For use in both indoor and outdoor situations, the range can be used to clad almost any wall or floor surface using the appropriate hidden or visible fixing system.

Framework can be chosen in a variety of interesting finishes including: a sleek, even and smooth R9; a pock marked and imperfect porous finish; and a cracked, creased and uneven raw version. Each of the finishes echoes a different type of concrete, offering a huge amount of character and authenticity. Notably the sleek finish achieves an outstanding 40+ PTV in wet conditions.

For a modern and utilitarian aesthetic, the sleek and porous finish slabs can be produced to feature stylish ankerdots. These circular indentations not only look incredibly contemporary, but are also used to screw the slabs to the intended surface. The militaristic ankerdots can be finished with concrete effect or metallic plugs.

Additionally Solus Ceramics can discuss special bespoke pieces that can be produced for your projects. Special requests include beautifully engraved pieces, perforated slabs and graphically patterned decorations.



FRAMEWORK FINISHES, COLOURS AND SIZES:

Available in **Sleek R9** and **Porous** with or without **ankerdots**. And **Raw** finish. PTV results available upon request.
Please call for more details.

[click here for more information about the Framework range](#)



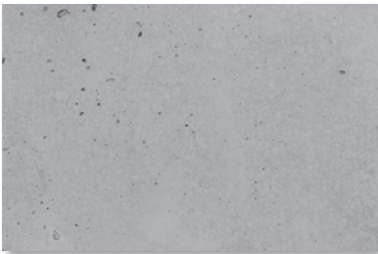
Melrose 2FRT505



Othello 2FRT507



Sleek Finish



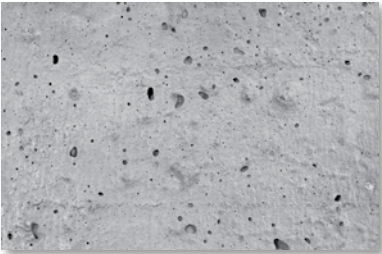
Porous Finish



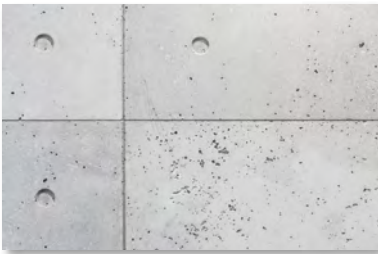
Nickelby 2FRT506



Parkfield 2FRT509



Raw Finish



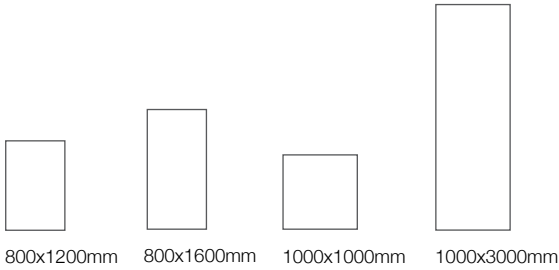
Ankerdots



Angela 2FRT510



Newburn 2FRT508



FORMAT

EXPRESSIVE AND
INTERESTING CONCRETE
EFFECT TILES

A range that reflects the sights and textures of urban environments, Format is influenced by landscapes of glass and steel, together with the character of cement.

Providing a solid foundation for almost any type of project, Format is a strong and modern choice that is timeless, durable, waterproof and long lasting.

A stylish opportunity for private residential projects, offices and commercial premises, the collection can be applied to walls and floors in both interior and exterior locations.

The tiles in this range are richly and distinctly detailed, and are populated with a myriad of dynamic dark and light tonal variations. When laid across a wide area,

the different tiles will showcase variable features, yet work in harmony to create a uniform ambience.

A neutrally themed collection, Format is made up of six charismatic colours, including grey, sand and ivory. 5 sizes are available, including large format options, all measuring 8mm in thickness. All tiles in the range are finished with a matt texture and provide an R10 slip resistance rating.

For a unique graphical decoration, the range also includes delicately stained patterned tiles. These stunning pieces feature lightly printed filigree and abstract details to the surface of the concrete effect tiles.

Create stunning patterned pathways or randomly drop a few patterned tiles into an otherwise plain design, the choice is yours and the possibilities are infinite.



Naila Decor 3TSN105d105



Gladbeck 3TSN104

A PRACTICAL AND
VERSATILE RANGE
THAT CAN BE
USED INDOORS
AND OUTDOORS



Ansbach 3TSN103



Gladbeck 3TSN104



Passaic Decor 3TSN101d101

FORMAT FINISHES, COLOURS AND SIZES:

Available in a **Natural R10** and **Natural R1120mm** finishes. PTV results available upon request.

Please call for more details.

[click here for more information about the Format range](#)



Penzlin 3TSN106



Naila 3TSN105



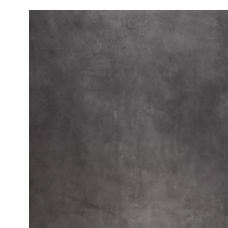
Passaic 3TSN101



Howell 3TSN102



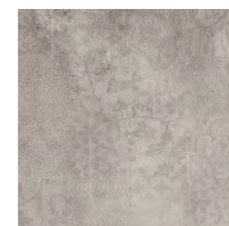
Gladbeck 3TSN104



Ansbach 3TSN103



Penzlin Decor
3TSN106d106



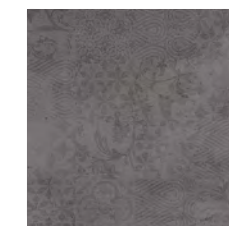
Naila Decor
3TSN105d105



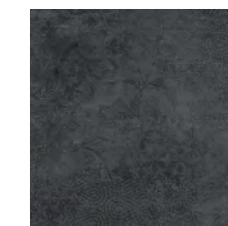
Passaic Decor
3TSN101d101



Howell Decor
3TSN102d102



Gladbeck Decor
3TSN104d104



Ansbach Decor
3TSN103d103



300x600mm



600x600mm



600x1200mm



750x750mm



750x1500mm

EMIRATES STADIUM

← Blocks 52 - 73

← Woolwich

Highbury

→ Blocks 51 - 74

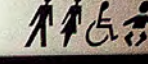
← Toilets



← Emirates Lounge

49'ers

→ Toilets



THE
ROYAL
OAK



THE
ROYAL
OAK



ESTD 1886

FORWARD

PROJECT

THE ROYAL OAK



THE ROYAL OAK

P R O J E C T

Innovative hospitality design at Arsenal

The newly refurbished Royal Oak at Arsenal's Emirates stadium respectfully encapsulates the football club's founding roots, whilst offering a modern and welcoming environment for guests.

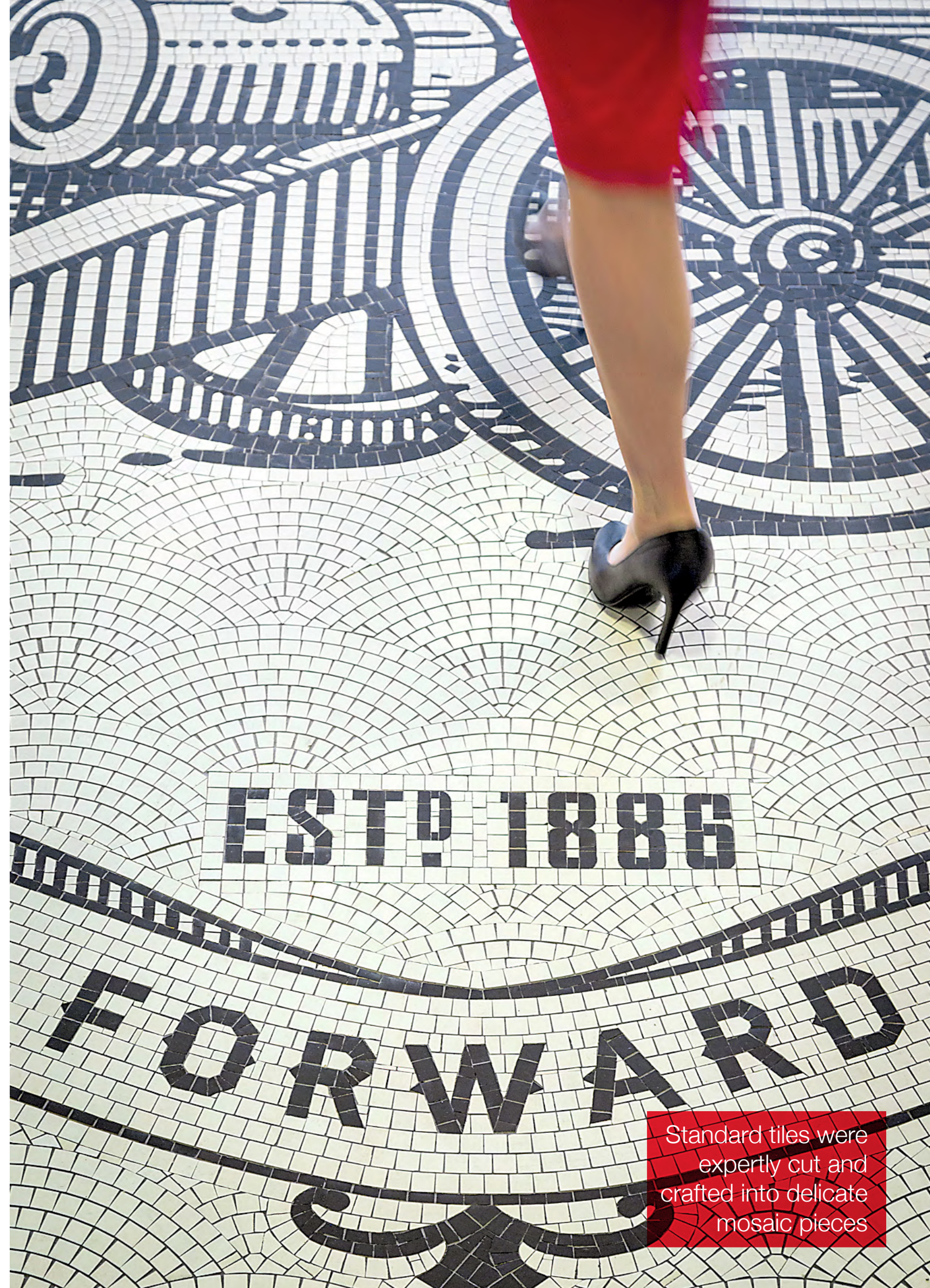
The dynamic space offers an alternative type of experience to regular match day hospitality by adding an intimate glimpse of the heritage of the club whilst still providing large volumes of space for more than 2,000 match day fans.

2020 Limited, who describe themselves as a team of original thinkers, challenge seekers, problem solvers, great listeners, storytellers, creative designers and

digital experts collaborated with Arsenal FC to create and bring to life the venue.

Solus Ceramics were excited to assist with the project by supplying tiles to many different areas of the 1,400m² space. Bespoke Victorian style tiling, beautiful slate effect tiles, and a complex logo mosaic all contribute to the premium, and authentic atmosphere.

Around the central bar, Solus Ceramics supplied porcelain slate effect tiles from the aptly named Slate 1 range. These charcoal black tiles, offer an authentic recreation of slate like textures and crevices, whilst providing the excellent and reliable durability of porcelain.



Standard tiles were expertly cut and crafted into delicate mosaic pieces



The bespoke mosaic club crest

To complement these natural look tiles, Solus Ceramics also supplied a bespoke and complex Victorian style floor pattern to the seating and table area. The pattern, which was designed by the creative team at 2020, used an existing Victorian pattern from the Program 2 range, which was then modified to include an alternative bespoke cut, claret red triangle tile.

Finally Solus Ceramics also project managed and supplied the complex mosaic floor design that overlooks the football pitch. The design, which depicts the clubs iconic crest, was produced especially for this project from full sized black and white tiles. The tiles were expertly cut and mounted onto mesh backing as per the exact design, ready to be efficiently laid by the contractor.

Slate effect tiles provide a sense of understated luxury



Jurita 3PPM008



Bespoke Program 2 pattern



A victorian inspired floor pattern



John Rose
Solus Ceramics Area Sales Manager
johnrose@solusceramics.com

“ The Royal Oak was a wonderful project to work on and also to collaborate with a team that really pushes the boundaries when it comes to branding and interior design.

It was an especially interesting concept that mixed traditional Victorian sensibility with a modern aesthetic.

The bespoke mosaic in particular was something that Solus Ceramics had never done before and required the use of traditional techniques to achieve the finished look. ”

THE ROYAL OAK
PROJECT

[click here for more information](#)

CONQUEROR

A UNIQUE PERSPECTIVE ON
CONCRETE EFFECT TILES

NEW RANGE
ESSENTIAL COLLECTION



SHOWCASING A MYRIAD OF SUMPTUOUS SPECKLES

A distinctive and modern trend, concrete look tiles are fast becoming one of the most desirable finishes for both commercial and residential projects.

Many modern and heritage buildings may feature genuine concrete surfaces, but there are huge benefits to using porcelain tiles. A porous composite material, concrete is typically very absorbent and will discolour with use. In contrast, porcelain tiles like the Conqueror range, are extremely hard wearing, easy to clean, impervious to wet contaminants and can also offer excellent slip resistance.

Brand new for Solus Ceramics, Conqueror is a unique concrete effect range that perfectly brings to life the quality of concrete. Available in four colours, the range covers a beige and grey spectrum of warm neutral hues, all of which are versatile and stylish.

Available in four practical sizes: 300x600x9.5mm; 450x900x10mm; 600x600x10mm; and 600x1200x11; Conqueror provides the flexibility to be used in both small and large scale projects and even for wall applications.

Very different to other concrete effect products, each tile in this range features distinct large speckles in a myriad of complementary shades, along with billowing cloudy tones. Echoing the flecks and impurities of aggregate, which is the material concrete is composed of, the tiles provide a huge amount of character.

In addition to the four standard natural R9 finish sizes, Conqueror also includes an anti slip 600x600x10mm version which offers a slip resistance rating of R12, ideal to meet the demands of high footfall commercial areas.



Each tile is intensely populated with flecks and specks



Stephen Baker
Solus Ceramics Sales and Marketing Director
stephenbaker@solusceramics.com

“A staple of Solus Ceramics Essential collection, concrete effect tiles are quickly becoming one of the most popular styles for almost every type of project.

Conqueror follows the trend for that aesthetic, yet is different enough to warrant your attention.

The tiles are full of interesting character and the playful decors add the option to create stunning feature designs.”

Create stunning patchwork designs with decor pieces

CONQUEROR FINISHES, COLOURS AND SIZES:

All colours available in **Natural**, **Lappato** and **Anti Slip** finishes. PTV results available upon request. Please call for more details.

[click here for more information about the Conqueror range](#)



Dent 2MTN101



Grivola 2MTN104



Breithorn 2MTN102

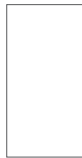


Eiger 2MTN103



Nanda 2MTN106

This pattern is created from many differently designed décor pieces supplied randomly in a box.



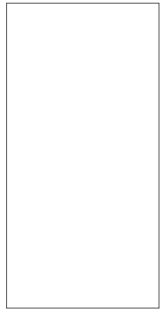
300x600mm



450x900mm



600x600mm



600x1200mm

A wide-angle photograph of a modern building's interior. The space is characterized by a high ceiling with a complex, geometric wooden slat pattern. A prominent feature is a red, spiral staircase that winds upwards through the center of the atrium. The floor is made of large, light-colored square tiles. In the foreground, there are green armchairs and a wooden handrail. To the right, a long, red reception desk is visible. In the background, a coffee bar with a sign that says "COFFEE" is located. The overall atmosphere is bright and contemporary.

LEWISHAM SOUTHWARK COLLEGE

PROJECT



LESOCO

PROJECT

An award winning contemporary college atrium

The first phase of a £40 million campus redevelopment project at Lewisham Southwark College by Platform 5 Architects and Richard Hopkinson Architects has recently been completed.

Phase 1, which has now opened to students, provides 2,047m² of education floor space, an impressive architectural reception atrium, a remodelled and extended classroom block, and the re-cladding of the existing main entrance.

Natural toned tiles from Solus Ceramics' concrete inspired Monolith range were selected for this project in two colours and two different formats.

The richly coloured, slightly ripple textured tiles were laid in an elegant pattern throughout the atrium, alternating between bands of 300x600mm and 600x600mm formats.

The tiles perfectly complement the entire scheme including the bright and vibrant colour palette; the dynamic oak veneered ceiling panels; the abundant natural light welcomed by the magnificent roof lights; and the tall tubular tree-like columns.

The perfect material for this type of project, Monolith offers fantastic natural character, durability and good slip resistance.



Alternating bands of tiles were laid to create an impressive floor design

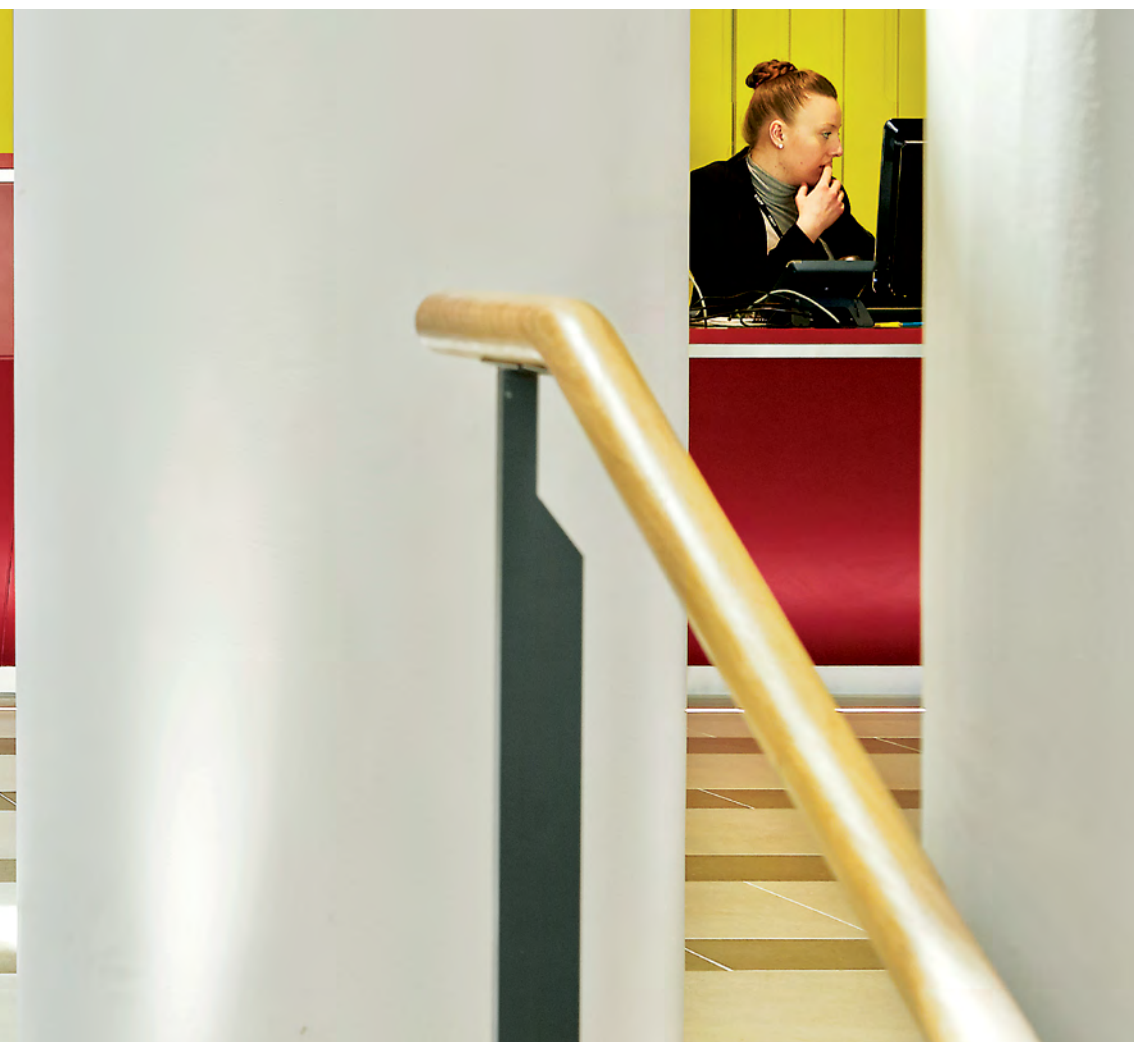
What previously was an unsightly and difficult courtyard, now offers a large and welcoming space that can perform a range of uses: a flexible teaching area, a venue for exhibitions or events, or the focus for key events in the college year such as enrolment.

Solus Ceramics would also like to extend their congratulations to the project architects: Platform 5 Architects together with Richard Hopkinson Architects, as the project recently won the Architect Journal's 2015 Retrofit Award in the 'Higher Education' category. One judge concluded 'The strength of the architecture and the clear environmental design strategy make this a solid, high quality submission. A worthy winner.'

The natural toned tiles are enriched by the abundant light and bold colour scheme



Parsley 2APX507, Morecheba 2APX508



Parsley 2APX507, Morecheba 2APX508



A stunning landmark in the local area



Pete Toule
Solus Ceramics Area Sales Manager
petetoule@solusceramics.com

“ Having considered a number of ranges, the designers selected the Monolith range. A fantastic range, the rich colour quality and subtle speckle helps to hide the marks from day to day usage.

These characteristics make Monolith a great range for large public spaces and atria and by using tiles of different sizes and different tones within the space the designers have created a floor that gives a real impact, without detracting from the rest of the architecture. ”

LEWISHAM
SOUTHWARK
COLLEGE
PROJECT

[click here for more information](#)

The image shows a bright, modern interior space. On the left, a large, light-colored concrete wall features the word "HORIZON" in large, recessed, sans-serif capital letters. Below the wall, there are two long, thin wooden shelves. The top shelf holds various decorative items, including white ceramic bowls, a stack of books, and small white containers. The bottom shelf holds more books, a modern faucet, and some kitchenware. Below the shelves is a white, minimalist kitchen unit with a sink and a wooden countertop. To the right of the kitchen unit, there is a wooden ladder leaning against a white wall. The ladder is made of light-colored wood and has several rungs. In the foreground, there is a small wooden chair with a glass globe on top, a small potted plant, and a stack of books. The floor is made of large, light-colored tiles. The ceiling is made of exposed wooden beams, and the walls are made of large, light-colored concrete panels. The overall aesthetic is clean, modern, and minimalist.

HORIZON

A NEW
HORIZON FOR
TILE DESIGN

ESSENTIAL COLLECTION



EXPRESSIVE CONCRETE TILES

An emerging range at Solus Ceramics, Horizon is a beautifully authentic concrete inspired product with a host of impressive and practical qualities.

Not only do the tiles in the Horizon range look incredibly modern and trendy, but they can also be used in complex retrofits, refurbishments and of course, new projects.

With a thickness of only 6.5mm, Horizon is an especially thin product that can be applied to both walls and floors as long as the surface can bear the weight and the sub straight is compliant. Many may assume that thinner tiles offer less durability, but impressively the tiles in this range offer the same strength as standard 10mm thick tiles. In addition, unlike many other thin options, these tiles are not resin backed, which negates some typical fixing issues.

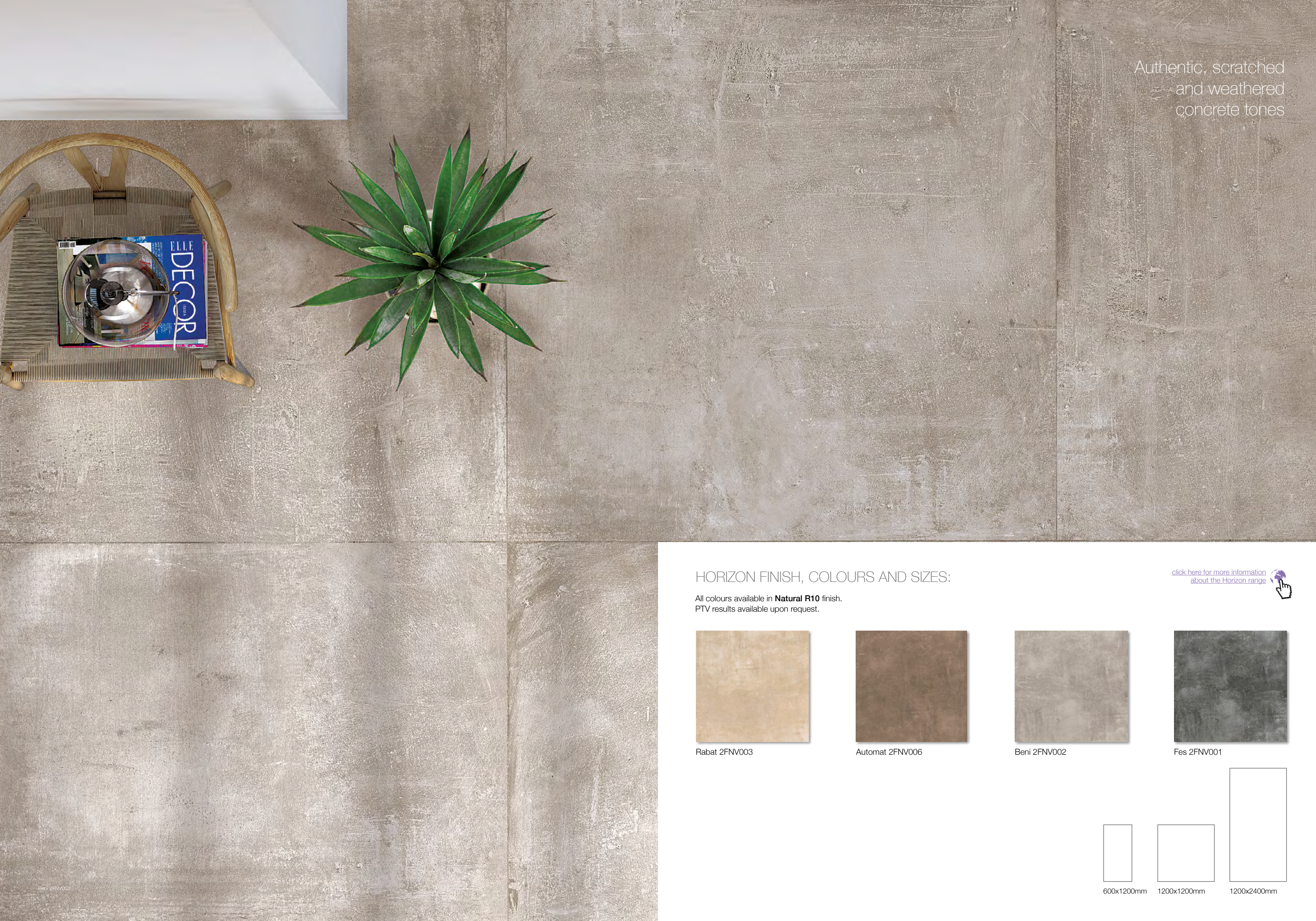
The thickness of the tiles also means that they are much lighter than normal sized large format tiles.

Not only does this mean that they weigh less, but are also more environmentally friendly to transport and additionally they are constructed from far less raw material.

The tiles can even be fitted over existing tiles, which could accommodate a very efficient retrofit of an existing area. Solus Ceramics have supplied this range to a refurbishment of a working shopping centre, successfully fixing them over existing tiles, whilst remaining accessible to the public.

Horizon is available in three super large formats including 1200x2400mm, 1200x1200mm and 600x1200mm. These monolithic, grandiose tiles can be used to create jaw-dropping schemes of impressive size and scale. Excellent wet pendulum test value results of more than 30, indicate that the Horizon range is an excellent choice for commercial projects such as retail units, offices and restaurants where slip resistance is essential.





Authentic, scratched
and weathered
concrete tones

HORIZON FINISH, COLOURS AND SIZES:

All colours available in **Natural R10** finish.
PTV results available upon request.

[click here for more information
about the Horizon range](#)



Rabat 2FNV003



Automat 2FNV006



Beni 2FNV002



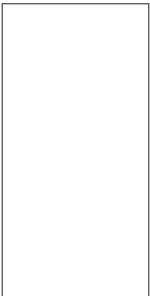
Fes 2FNV001



600x1200mm



1200x1200mm



1200x2400mm

custom *printed* TILES

PRODUCING BESPOKE PRINTED TILES FOR YOUR PROJECTS

What would you create if you could produce your own graphic tile range? Would you convert your favourite landscape image onto a feature wall; bring to life your own hand drawn artwork; or reproduce a lost heritage tile pattern?

What may seem like a far off fantasy is now a reality thanks to the advancement of tile printing technology.

Take for instance the new bar/café area The Lyric Hammersmith in London, which was designed by the team at Rick Mather Architects.

The eclectic environment features a fantastically graphic and vibrant series of abstract wall tiles behind the bar. These unusual and eye-catching pieces were designed in the studio, and subsequently printed in high definition onto existing plain porcelain wall tiles.





If you would like to create your own bespoke printed tile range, we have answered a few frequently asked questions.

- Substrates we can apply images to include ceramic, porcelain, glass and enameled steel
- From approval of artwork we can manufacture a finished project within 4 weeks
- Each tile is individually numbered and a grid layout plan is created for installation
- Artwork must be provided in high resolution (at least 300dpi)
- If required we can source suitable artwork to your specification
- Samples can be produced before committing to the order
- Vitrified tiles can be supplied for outdoor use, including swimming pools and wet rooms, indoors and outdoors (weather/frost resistant)
- Images are UV safe so they will not fade
- Wall tiles meet BS14411 – Unless supplied by client
- Floor tiles are commercially rated and come in a range of anti-slip finishes
- Test certification available





EXPERIENCE CPD SEMINARS WITH SOLUS CERAMICS

Solus Ceramics are proud to offer a number of CPD seminars to professionals in the design industry. As part of their continuing commitment to customer support, CPD seminars are totally complimentary to any interested parties including past clients and new contacts.

These CPDs, which are all themed around the subject of tiles and tile installation, will help you to develop your knowledge and appreciation of diverse tile related subjects such as safety information, innovative tile products, British Standards and sustainable tile production.

CPDs can be arranged at a time to suit you and can be held at a your own workplace or a meeting point of your choice, as long as sufficient facilities are available.

Alternatively, Solus Ceramics welcome you take part in CPDs at their Birmingham HQ or The Creative Centre. In addition to taking part in one of our many CPD seminars, which is presented by a member of our experienced and knowledgeable team, Solus Ceramics will also provide a free lunch.

Solus Ceramics are happy to accommodate both small, intimate gatherings and large scale group sessions.

Booking a CPD seminar could not be easier.

Scan the desired CPD QR Code or
www.solusceramics.com
0121 753 0777
Info@solusceramics.com



SEMINARS

MEETING THE INDUSTRY'S NEEDS

The main aims of this seminar are to:

- Provide the specifier with ongoing technical and product information as part of continuous professional development
- Discuss subjects which will help the specifier utilise floor and wall tiles avoiding any potential issues
- Provide knowledge and technical support in all areas of supply right through to installation
- To ensure correct detailing for the laying and application of ceramic and porcelain tiles

Duration: 45 to 60 minutes

The seminar includes information on the equalities act and British Standards, as well as Slip Resistance requirements, wet area tiling, movement joints, NCS colour scheme, calibration and corundum inserts.

DON'T SLIP UP!

This bespoke seminar will provide you with:

- The latest guidance on anti slip floor tiles and the testing procedures
- A video demonstration of the ramp test (DIN 51130 and DIN 51097) and live demonstrations of the Wessex pendulum machine and surface roughness meter
- Up-to-date HSE anti slip guidelines for commercial floor tiling
- Specific project risk assessment, function before form
- Site conditions, user behaviour, possible contaminants, maintenance

Duration: 45 to 60 minutes

20 YEARS

1995-2015

- 20 Years experience in the tiling industry
- 20 Years of forging manufacturer relationships
- 20 Years of building trust
- 20 Years of success