



INGENIOUS

The beauty of weathered steel

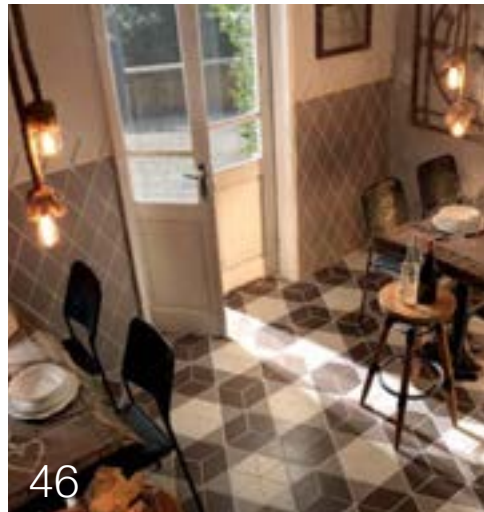
Achieve the aesthetic of modern, metal surfaces with Ingenius, a perfect range for minimal, architectural projects.

FACTORY 2050
PROJECT

SEQUENCE
NEW ANTI SLIP RANGE

TRENCH
NEW GRANITE EFFECT RANGE

FAIRFIELD POOL
PROJECT



46



04



16



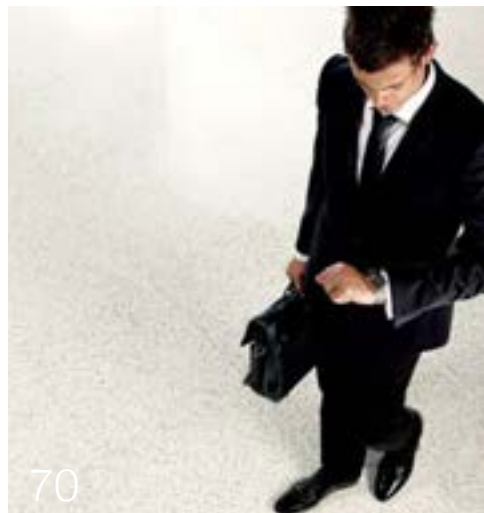
64



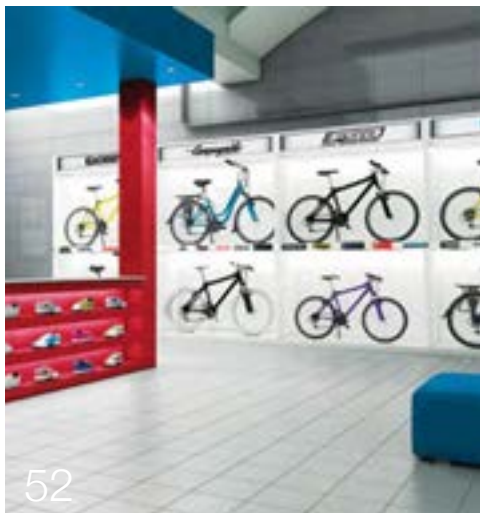
40



22



70



52



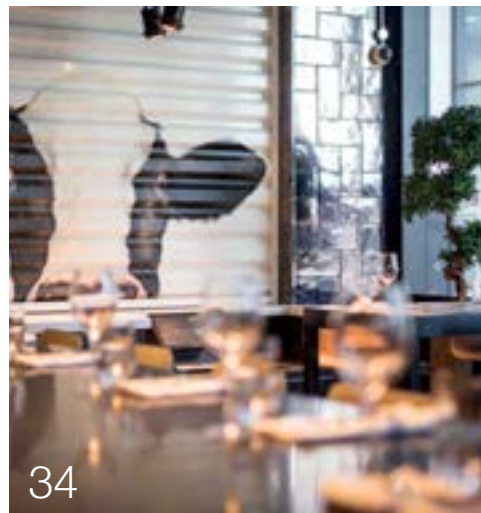
58



10



28



34

quarter

Supplying your imagination

Chairman
PETER BENTLEY
peterbentley@solusceramics.com

Managing Director
MARCUS BENTLEY
marcusbentley@solusceramics.com

Finance Director
RYAN BENNETT
ryanbennett@solusceramics.com

Sales and Marketing Director
STEPHEN BAKER
stephenbaker@solusceramics.com

Director and Midlands sales
GEORGE HOGAN
georgehogan@solusceramics.com

London sales
HANNAH CONWAY
hannahconway@solusceramics.com

JO BURLEY
joburley@solusceramics.com

JOHN ROSE
johnrose@solusceramics.com

MARK AYLIFFE
markayliffe@solusceramics.com

MICHAEL IRVINE
michaelirvine@solusceramics.com

PETE TOULE
petetoule@solusceramics.com

DENNIS COOK
denniscook@solusceramics.com

East Midlands and Oxfordshire sales
ZOE SYROKA
zoesyoka@solusceramics.com

Midlands sales
MARK WRIGHT
markwright@solusceramics.com

North sales
DAVID OVERTON
davidoverton@solusceramics.com

Wales and South West sales
RICHARD BARON
richardbaron@solusceramics.com

The Creative Centre, London
thecreativecentre@solusceramics.com

Editor
PAUL SHEPHERD
paulshepherd@solusceramics.com

Designer
RICARDO JARDIM
ricardojardim@solusceramics.com



Head Office & Tile Studio
Unit 1, Cole River Park,
285 Warwick Road
Birmingham, B11 2QX
0121 753 0777
sales@solusceramics.com

The Creative Centre Showroom
9 Baker Street,
London, W1U 3AH
020 7935 7355
thecreativecentre@solusceramics.com

CONTENTS

- 04 Intrigue, new range. *Modular, geometric tiles*
- 10 The Diamond. *Landmark building in Sheffield*
- 16 Trench, new range. *A modern interpretation of granite*
- 22 AMRC, Factory 2050. *The future of UK manufacturing*
- 28 Ingenious, new range. *A contemporary, 'metal look' series*
- 34 Drake & Morgan at King's Cross. *Exceptional hospitality design*
- 40 Sequence, new range. *Stylish anti slip tiles*
- 46 Global, new range. *Dynamic, quirky shapes*
- 52 Halogen range. *Bright and bold tile style*
- 58 Fairfield Pool. *A modern swimming pool refurbishment*
- 64 The Passage. *Inspirational home for charity project*
- 70 Technici Gres 4 range. *Beautiful speckled tiles*
- 76 Interview with Michael Irvine. *Get to know the Solus Ceramics team*
- 78 Solus Ceramics CPD. *Free seminars for you to experience*

Choose an article or click any image on left page

Editor's letter



Paul Shepherd
editor

WITH SIX PREVIOUS ISSUES UNDER OUR BELTS, we thought it was time to give Quarter a little facelift, so you may notice a few changes to the format, which we believe adds even more energy and style to the magazine!

Based on feedback from the last magazine, which was filled with neutral, edgy and urban ranges, Issue 7 is here to get you in the mood for summer with a host of colourful, bright and playful products like Halogen and Trench.

As well as these vivid and dynamic new ranges, we have also themed this edition around shape- and you are sure to be inspired by some interesting formats such as hexagons, trapeziums, chevrons and an intriguing cog shaped tile from the Global range.

Finally we have picked out a collection of amazing projects that we have had the privilege of working on recently including Factory 2050, The Passage and Drake & Morgan at King's Cross.

Paul Shepherd

INTRIGUE

MODULAR
GEOMETRIC
FLOOR TILES





A fully modular, fashionable range for trend setting projects

Embracing the trend for modularity, Intrigue is a fresh and fashionable tile range featuring a selection of interesting shapes that can be combined together to create an endless array of inspiring designs.

The range consists of three formats: a hexagon, a trapezium and a chevron shape, which offer a huge amount of versatility to create interesting and unique floor and wall patterns.

Whether it is a mixture of all three designs, or a combination of hexagons and trapeziums, due to the modular design of this range any of the pieces and colours can be mixed and matched together.

Created to allow designers to generate continuous,

coherent spaces, Intrigue possesses a flowing, smooth aesthetic that is modern and chic.

Consisting of three grayscale colours, this range while compact, delivers sought after style, sophistication and distinctiveness.

The Matt R10 finish exudes contemporary finesse, and provides an elegant urban tactile texture that is beautiful to the touch and to the eye.

The Intrigue range is the perfect product for both commercial and residential spaces, bringing the versatility needed for a variety of project types including bars, restaurants, bathrooms and office developments.



A trend setting example of how to mix two differently shaped tiles



The variety of possible patterns is almost limitless

Beaford 2DEV101

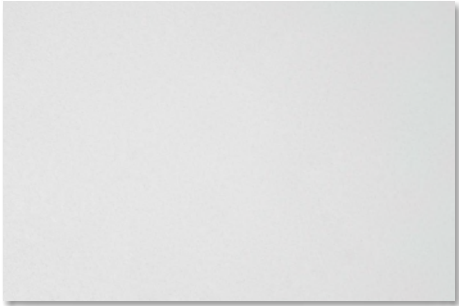


Beaford 2DEV101

INTRIGUE FINISH, COLOURS AND SHAPES:

This range is available in a **Matt R10** finish. PTV results available upon request. Please call for more details.

[click here for more information about the Intrigue range](#)



Beaford 2DEV101



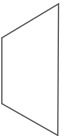
Haldon 2DEV102



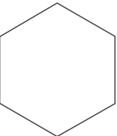
Nympton 2DEV103



98x522
10mm
(Chevron)



98x230
10mm
(Trapezium)



199x230
10mm
(Hex)



THE DIAMOND
THE UNIVERSITY OF SHEFFIELD
PROJECT



THE DIAMOND

THE UNIVERSITY OF SHEFFIELD

PROJECT

A 'diamond' landmark building in Sheffield

Leading tile supplier Solus Ceramics adds style to Sheffield University's very own Diamond building with the use of its elegant Jurastone range.

Named after its unique appearance, the Diamond is the new campus building for engineering students at The University of Sheffield, and is home to more than 2,000m² of floor tiles from Solus Ceramics.

The impressive 19,500 square metre building, designed by Twelve Architects and constructed by Balfour Beatty, is the largest capital investment in teaching and learning ever undertaken by the University. Boasting specialist engineering

laboratories, lecture theatres, large-scale flexible teaching spaces, workshops, and a learning resource centre, the Diamond building is a fantastic addition to the university campus.

A central focus in the heart of the building, the Solus Ceramics Jurastone range was fitted to the atrium floor and to an impressively grand staircase. Mimicking the elegance of stone, Jurastone is populated with natural speckles, shading and fossil-like patterns. Created using the most advanced digital technology, the range features over 70 different pieces of stone that have been photographically reproduced in porcelain.



Each tile portrays its own individuality with natural tones

Hannah Baker, Project Architect at Twelve Architects, said of the project: "The external appearance addresses the client's desire for a landmark building.

"The anodized aluminium and triple-glazed façade draws inspiration from the detailing of the surrounding historic buildings, making reference to 'cellular automation', a discrete model studied in engineering and used by the University to describe how the microstructure of steel changes during processing.

"Internally, a public route at ground floor level accesses the first floor main central atrium, where Jurastone is also used, enabling people to view the engineering activities being undertaken.

"We selected the Solus Ceramics Jurastone range, not only for its aesthetic qualities but because it met the needs of the project with its excellent non slip characteristics and durable nature. The matt finish complements the full-height glazing that maximises internal views, whilst roof lights flood the interior with daylight, allowing natural light to penetrate throughout the atrium whilst creating acoustic separation."



The light, natural tiles perfectly suit the modern ambience of the atrium

Wurly 3STO102



Wurly 3STO102



Wurly 3STO102



Pete Toule
Solus Ceramics Area Sales Manager
petetoule@solusceramics.com

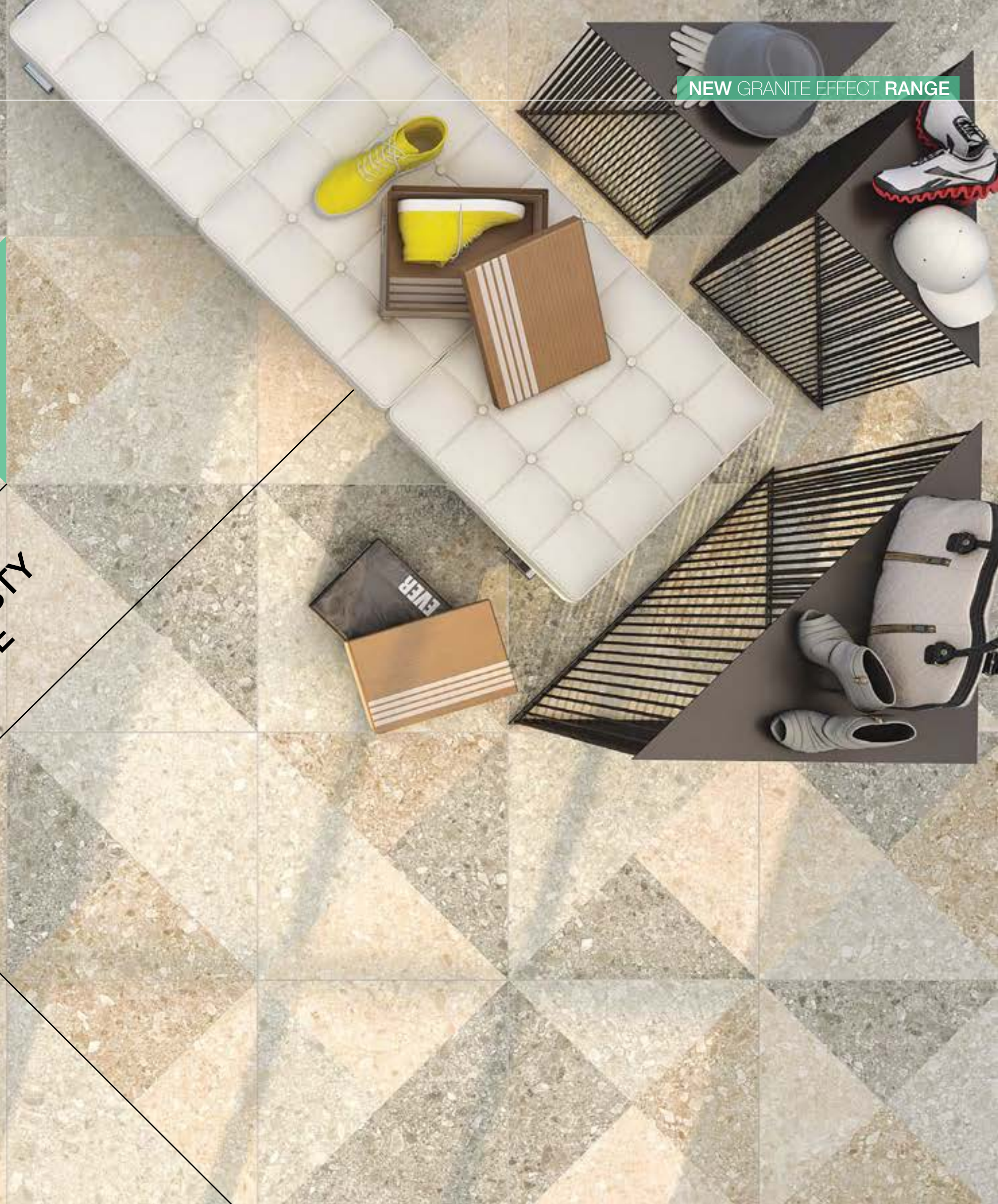
"The Diamond was a fantastic project to work on making an architectural statement within both the educational sector and the region.

The characteristics of our Jurastone range makes it a great choice for large areas like the Diamond. Its large size and high level of slip resistance make it perfect for high traffic public spaces.



TRENCH

REFLECTING THE MAJESTY
OF NATURAL GRANITE





Clechani 3CRY104, Oakley 3CRY102

A highly speckled neutral range featuring funky patterned decors

Inspired by traditional Italian architecture, Trench is a stunning new range from Solus Ceramics that offers the look of intensely structured granite, in the form of highly engineered porcelain.

The range, which is available in three complex core tones of ivory, grey and cement showcase an abundantly speckled design, mimicking the look of pebbles and aggregate.

These beautiful speckles populate each and every tile from edge to edge, and are made up of a variety of complementary light and dark tones, adding a strong sense of character and a spark of natural style.

Each tile offers a moderate level of variation, which means that when the tiles are laid, it would be difficult to see a repeated tile in a scheme echoing the quality of how a natural material would look.

Perfect for both indoor and outdoor use, the range includes two traditional sizes including a practical 600x600mm square and an intriguing large format 600x1200mm tile. As well as the Natural R9 finish, the tiles in the range can also be selected in a luxurious Semi-Polished finish.

In addition, an interesting and exciting choice of décors accompany the three main colours.



Influenced by the look of natural stone, Trench provides a modern ambience

Clechani 3CRY104, Oakley 3CRY102, Beckley 3CRY103

These décors feature elements of the core shades and a further brown colour. Each décor piece is decorated with unusual triangle designs that can be used to create amazing patchwork laying patterns.

When ordered, the décor pieces are randomly packed in sets of three, this means that the designers will be working with a random selection of décor designs.

Finally, as with all of Solus Ceramics' ranges, users can also order matching step treads and plinths in any of the three main colours.

Décor pieces are supplied in random batches, inspiring a creative laying process



Clachan 3QRY104



Oakeley 3QRY102



Clachan 3QRY104, Oakeley 3QRY102, Beckley 3QRY103

TRENCH FINISHES, COLOURS AND SIZES:

[click here for more information about the Trench range](#)

Available in **Natural R9** and **Semi-Polished** finishes. PTV results available upon request. Please call for more details.



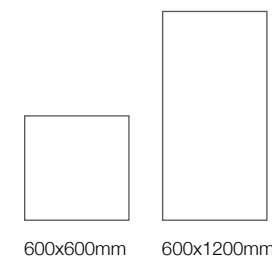
Wrysgan 3QRY101



Oakeley 3QRY102



Beckley 3QRY103



Clachan 3QRY104 - Many different designs randomly packed in boxes of three.



AMRC
FACTORY 2050
PROJECT



AMRC FACTORY 2050

PROJECT

Exploring the future of engineering in style

Solus Ceramics were delighted to help engineer the design of the manufacturing research facility, Factory 2050, with the installation of tiles from three striking tile ranges.

Factory 2050 is the future of the UK's engineering industry, and provides a home in Sheffield for up to 70 staff focused on the research and demonstration associated with making the next generation of aircraft and energy technologies.

Bond Bryan Architects designed the innovative 6,700 square metre, revolutionary glass-walled building at the heart of the University of Sheffield's new advanced manufacturing campus on Sheffield Business Park.

With the client wanting to create a light and refreshing finish with statement accents, large

format 750 x 1500 mm tiles from the Solus Ceramics Replicate range were installed in the central rotunda, breakout spaces and perimeter circular walkways, in two contrasting shades to give a subtle yet striking effect. In addition, Solus Ceramics also supplied tiles from its Stonework and Modular ranges to the bathroom facilities throughout the building.

The concrete-inspired floor and wall tiles of the Replicate range embody a modern industrial aesthetic, fitting seamlessly into the surroundings of Factory 2050. Influenced by urban architectural trends and industrial landscapes, the grey floor tiles display elements of raw concrete with oily highlights.

Jon Rigby, Associate at Bond Bryan Architects, said of the project: "We selected the Replicate range from Solus Ceramics' Essential collection throughout the building to provide a contemporary, robust



Replicate mimics the tones and textures of raw concrete

aesthetic, using the tones and textures of concrete to contrast visually against the industrial metallics used elsewhere within the building fabric. The large format tiles allowed us to visually complement the impressive, large-scale open plan workshop spaces, so that the floor did not become lost and trivial within the space.

"The tiles were cut radially to follow the shape of the building using a water jet technique. This process was undertaken in a factory using a cutting company in liaison with ourselves and Solus Ceramics. It was necessary to ensure accuracy and consistency, and also to reduce site waste and installation time. The outcome is spectacular and the slight tonal difference selected from the range between the circulation and activity areas is fantastic."

Tiles were water jet cut to fit the radial design of the factory interior. The curvature of the tiles maintains a beautiful synergy with the architecture of the building




Juvenal 2AST511



Juvenal 2AST511



Juvenal 2AST511, Solus Grey SQNA326



David Overton
 Solus Ceramics Business Development Manager
 davidoverton@solusceramics.com

"We're always excited to work with people who push the boundaries and Bond Bryan Architects have done just this, with a refreshing approach to this development."

Factory 2050 has been a fantastic project to work on with such a revolutionary design, setting itself apart from any other manufacturing facility in the country."



INSPIRED BY
THE RUSTIC BEAUTY
OF WEATHERED STEEL

INGENIOUS





A modern 'metal look' tile for minimal, architectural projects

Inspired by the look of weathered steel sheets, Ingenious merges the concept of metal with the reliable durability of porcelain.

Bringing together ideas of modern architecture and aged industrial landscapes, the range provides intriguing contrasting tones and coarse textures with a contemporary, minimalist feel.

Featuring six core colours including pearly silvers, coppery browns and sharp greys, Ingenious evokes the story of steel, depicting the appearance of newly manufactured metal and the weathered look of rusted iron.

Each tile in the series displays very distinct and unique marks, splotches, stains and swirls, which mean that when laid in a space, the tiles will display a moderate level of variation.

Suitable for light commercial and residential projects, the range includes two finishes including Natural R9 and Lappato. A striking variety of sizes such as large format 300x1200mm and 600x1200mm options are available.

In addition, Ingenious also features an attractive array of décor tiles, which resemble parquet wood. The décors are supplied in a range of designs that are



randomly picked, and are used to create patchwork style patterns. These décor pieces are available in two colour varieties, warm and cold, and replicate the look of wooden planks.

Matching perfectly with the array of plain colours, these décors can either be used independently or as a complementary decoration with any of the other tiles in the range.



Sibford 2NTE104, Idbury 2NTE105

A unique aesthetic for chic, trendy, industrial inspired interiors



Asthall 2NTE101



Idbury 2NTE105

INGENIOUS FINISHES, COLOURS AND SIZES:

Available in **Natural R9** and **Lappato** finishes. PTV results available upon request.

[click here for more information about the Ingenious range](#)



Asthall 2NTE101



Lauton 2NTE102



Bladon 2NTE103



Sibford 2NTE104



Idbury 2NTE105



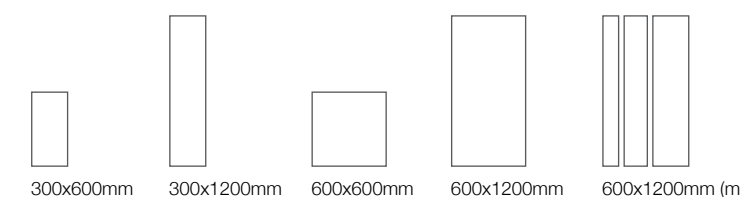
Wilcote 2NTE106



Kencot 2NTE107d101 *

Mixbury 2NTE107d102 *

* Kencot and Mixbury are available in 600x600mm. Both are packed in boxes of three random designs.



600x1200mm (mix) size can be ordered as a box of three smaller sized tiles (100x1200, 200x1200, 300x1200mm)



DRAKE & MORGAN AT
KING'S CROSS
LONDON

PROJECT



DRAKE & MORGAN

AT KING'S CROSS - LONDON

PROJECT

Statement tiles at central London bar & restaurant

As part of the recent regeneration of the area around King's Cross, Drake & Morgan have opened their ninth venue, which shares its name with the area.

Spread across two floors, Drake & Morgan at King's Cross is the biggest venue yet covering a huge 14,500 square feet, and comprises of two bars, a restaurant, a deli, a lounge, a private dining space and series of bookable kitchen pods.

The dining and drinks destination is located behind King's Cross Station, and follows on from the success of other venues in the city such as The Fable, The Happenstance and The Drift, all of which have featured tiles from Solus Ceramics.

Once again, Fusion DNA was responsible for the interior design of project, and specified a range of wall tiles from Solus Ceramics that were fitted in various areas.

In the basement, trapezium wall tiles from the Honeycomb range were used, creating an intriguing and interesting wall design. A recently added format to the range, the trapezium is effectively a split hexagon, and is set to be 'the' trendsetting shape for 2016 and beyond.

In the toilets, Solus Ceramics supplied beautiful glossy black wall tiles from the Artistry range. Two sizes were chosen and used together to form a unique geometric pattern.



Two different shaped tiles were used to create a quirky pattern

On the ground floor, hand made tiles that were produced specially for the project decorate the walls behind the open kitchen and nearby pillars. The dark tiles possess an iridescent glossy quality and are rustically rippled, gently reflecting natural light coming from the outside.

A standout element of the overall design, the tiles provide a playful style whilst echoing the high quality aesthetic of the establishment.

The handmade tiles are a real showpiece in the restaurant and posses a lively, dynamic quality, that perfectly fits the mood of the area



A UNIQUE AND TRENDSETTING NEW FORMAT

Set to be a huge hit in 2016, the team at Fusion DNA decided to use trapezium shaped tiles in the basement. Cladding a feature wall and various pillars, the trendy black tiles create a memorable design statement.



Kaiser 2TRR511



Michael Irvine
Solus Ceramics Area Sales Manager
michaelirvine@solusc ceramics.com

“ One of my favourite aspects of the design is the bespoke, hand made wall tiles that were used to clad the back wall behind the open kitchen.

The statement tiles possess an ethereal luminescence not often seen in standard commercial tiles, and they perfectly complement the high quality aesthetic of the venue.

”

NEW ANTI SLIP RANGE



SEQUENCE

ANTI SLIP TILES FEATURING
ON-TREND PATTERNS



Wansford 2HSP101, Goxhill 2HSP103

Safe yet **trendy anti slip tiles** provide **distinctive, patterned** style

A practical yet playful anti slip tile range, Sequence is a new direction in technical tiles, which shows that safety can be stylish.

Traditionally produced in plain and conservative colours, slip resistant tiles are a requirement in high traffic commercial zones, so it comes as no surprise that architects and designers are eager to push the boundaries of design with more innovative and appealing anti slip tiles.

Solus Ceramics are thrilled to introduce Sequence, an anti slip tile range that offers a chic variety of colours and a huge array of interestingly patterned décors.

The range is made up of six core colours including a dreamy summer blue, a pale sage green and a warm toasted brown. A striking synergy runs through the colour spectrum which lets designers mix and match colours, ideal for creating checker designs, defined borders and pathways or abstract patterns.

Sequence also includes more than 20 original décor tiles that feature a variety of interesting patterns, which utilise shades from the six central colour options.

Modern geometric designs, more traditional European reliefs, and funky retro motifs all feature



Yalden Door H 2HSP104d308, Yalden 2HSP104



Goxhill Decor I 2HSP103d209, Wansford 2HSP101

within the range, offering a huge amount of versatility. These décors can be used on their own to create repeated patterns or together to generate patchwork inspired designs.

Unlike other anti slip ranges, which feature tactile textures such as pin heads and disks, tiles in the Sequence range are finished with an unusual and creative lace pattern.

The 150x150x9mm tiles all possess the Anti Slip R11 (A+B+C) rating, and Solus Ceramics are able to carry out fully certified pendulum tests on request.



Goxhill 2HSP103, Goxhill Decor B 2HSP103d202

Create dynamic pathways or impressive patchwork designs with the décor tiles



SEQUENCE FINISH, COLOURS AND SIZE:

[click here for more information about the Sequence range](#)

This range is available in a **Anti Slip R11 (A+B+C)** finish with high PTV ratings. Please call for details.

Wansford 2HSP101	Adwick 2HSP102	Goxhill 2HSP103	Yeadon 2HSP104	Thorner 2HSP105	Kexby 2HSP106	Bilton Decor L 2HSP107d212
Bilton Decor K 2HSP107d211	Adwick Decor A 2HSP102d101	Adwick Decor B 2HSP102d102	Adwick Decor C 2HSP102d103	Adwick Decor D 2HSP102d104	Adwick Decor E 2HSP102d105	Adwick Decor F 2HSP102d106
Adwick Decor K 2HSP102d111	Adwick Decor L 2HSP102d112	Goxhill Decor A 2HSP103d201	Goxhill Decor B 2HSP103d202	Goxhill Decor C 2HSP103d203	Goxhill Decor D 2HSP103d204	Goxhill Decor G 2HSP103d207
Goxhill Decor H 2HSP103d208	Goxhill Decor I 2HSP103d209	Meltham Decor F 2HSP108d401	Yeadon Decor B 2HSP104d302	Yeadon Decor D 2HSP104d304	Yeadon Decor F 2HSP104d306	Yeadon Decor G 2HSP104d307
Yeadon Decor H 2HSP104d308	Yeadon Decor J 2HSP104d310	Yeadon Decor L 2HSP104d312	150x150mm			

GLOBAL

INSPIRING GEOMETRIC
TILES WITH A BALANCED,
NEUTRAL AESTHETIC



Angular tiles influenced by the colours of **stone and silk**

A series made up of expressive geometrically shaped tiles, Global is an exciting and energetic range, ideal for creating unusual and contemporary designs on both walls and floors.

Centred on a neutral, earthy aesthetic, Global features seven understated colours including soft greys, natural browns and warm beiges and is made from clay material set into moulds.

Inspired by the tones of volcanic stone, cement and clay along with notes derived from the soft serenity of silk and cotton, Global has a distinctly versatile appeal that bridges the divide between natural and man made materials.

Featuring four different unconventional formats, architects can explore a multitude of laying patterns to create truly unique surface designs.

The shapes include an equilateral triangle, a rhombus, a small hexagon and a revolutionary cog shaped hexagon 'star'. The formats can be used independently to create repeated, regular patterns, whilst others such as the rhombus and triangle can be mixed and matched to fulfil more intricate ideas.

Slightly uneven and interesting to touch, the tiles in this range possess a subtle handmade style effect not often seen in commercially manufactured tiles, providing a huge sense of character to a space. Due to the extruded nature of the tiles, variations may be seen from piece to piece, a 3-4mm joint is recommended to adapt to any imperfections.

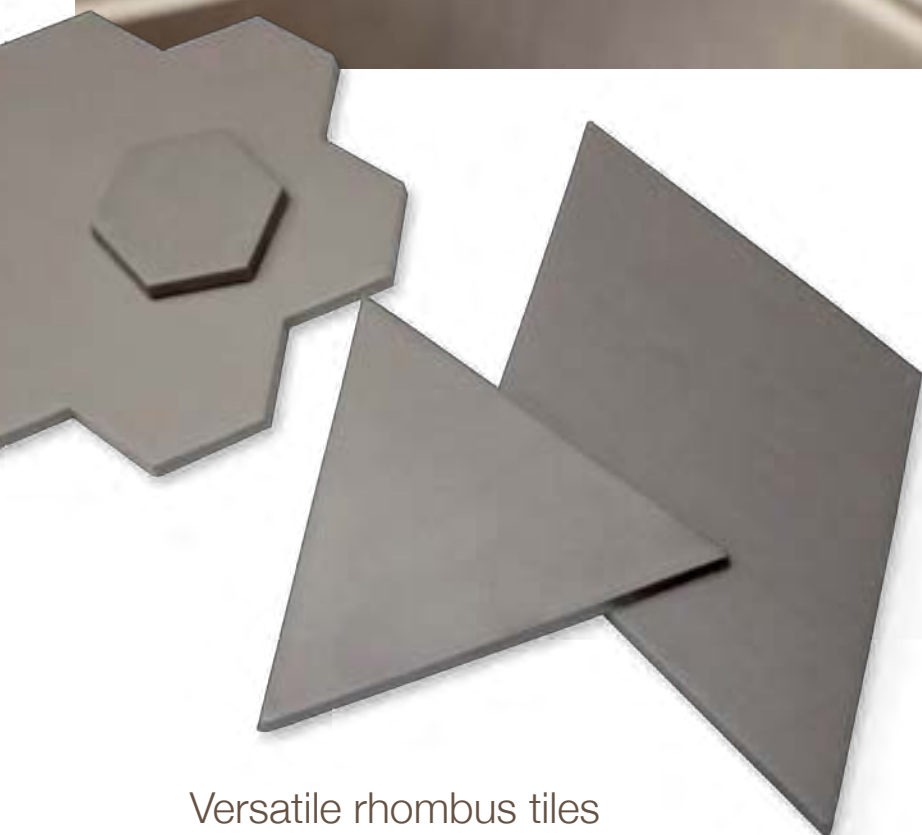
A highly durable material with a smooth yet tactile Matt R10 finish, Global is suited to both residential and commercial applications and provides the performance required for a number of uses.



Global provides on-trend style in both shape and tone



Sablet 2CAJ104, Karam 2CAJ105, Ikeni 2CAJ106



Versatile rhombus tiles can be used to create interesting hexagon patterns



Stephen Baker
Solus Ceramics Sales and Marketing Director
stephenbaker@solusceramics.com

“The tiles in the Global range provide an exciting and interesting array of shapes and colours, that can be used in an almost unlimited number of combinations.”

The slightly imperfect, rustic edges and gently uneven surface only add to the character and charm of the range.”



Kalfen 2CAJ107

GLOBAL FINISH, COLOURS AND SHAPES:

[click here for more information about the Global range](#)

This range is available in a **Matt R10** finish. PTV results available upon request. Please call for more details.



Agasse 2CAJ101



Baener 2CAJ102



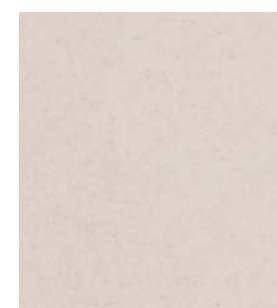
Reese 2CAJ103



Sablet 2CAJ104



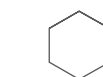
Karam 2CAJ105



Ikeni 2CAJ106



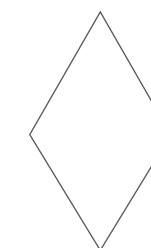
Kalfen 2CAJ107



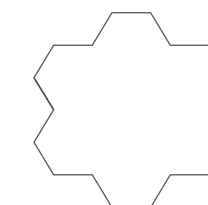
62x70x8mm
Hexagon



145x145x8mm
Triangle



145x245x8mm
Rhombus



200x200x8mm
Estella

HALLOGEN

**AN OPULENT RANGE
OF VIBRANT,
BRIGHT AND SOLID
PLAIN COLOURS**





Brexon 2RPV401, Spangle 2RPV436, Eternity 2RPV440

An energetic range characterised by solid, bright and vivid colours

Characterised by a wide selection of plain and uniform colours, Halogen is a solid and strongly pigmented range of full-bodied porcelain tiles, suitable for use on floors and walls.

Unlike many current trend setting ranges that present distinct variation from tile to tile, Halogen treads the path of regularity, with each tile possessing the same uniform level of plain colour across the entire surface of each piece.

Featuring more than 40 diverse colours, Halogen provides one of the most complete colour palettes available in a single range today, including a wide variety of both neutral and strong shades.

Within this selection of colours, designers can find familiar and typical hues such as beiges, greys and

taupes along with more unusual and unique tones like dusky greens and coastal blues. In addition, Halogen also includes a series of incredibly vibrant and dynamic bright colours such as tangerine orange, blushed salmon, luscious lemon yellow and an intense coral.

A vast and all-encompassing product line, Halogen offers an abundant and unprecedented variety of size options from small 100x100mm squares, up to large format 900x900mm pieces. Six different finishes are also at your disposal across the range, including Matt, Polished, Honed and Anti Slip R12 (A+B+C), but are subject to size and colour availability.

A breath of fresh air and an injection of colour and style, Halogen is the perfect product to bring a rush of energy and fun into any project.



A simple collection of extremely vibrant floor and wall tiles

Brexon 2RPV401, Nebulous 2RPV439, Carnation 2RPV425



Lumadeo 2RPV440, Berni 2RPV528



Hirwaun 2RPV407, Ruddy 2RPV472

INSPIRED BY
A RAINBOW OF
VIVID DYNAMIC
COLOURS



Dillingham 2RPV446



Mayoe 2RPV513



Lemonade 2RPV473, Berni 2RPV501, Mayoe 2RPV513

HALOGEN FINISHES, COLOURS AND SIZES:

[click here for more information about the Halogen range](#)

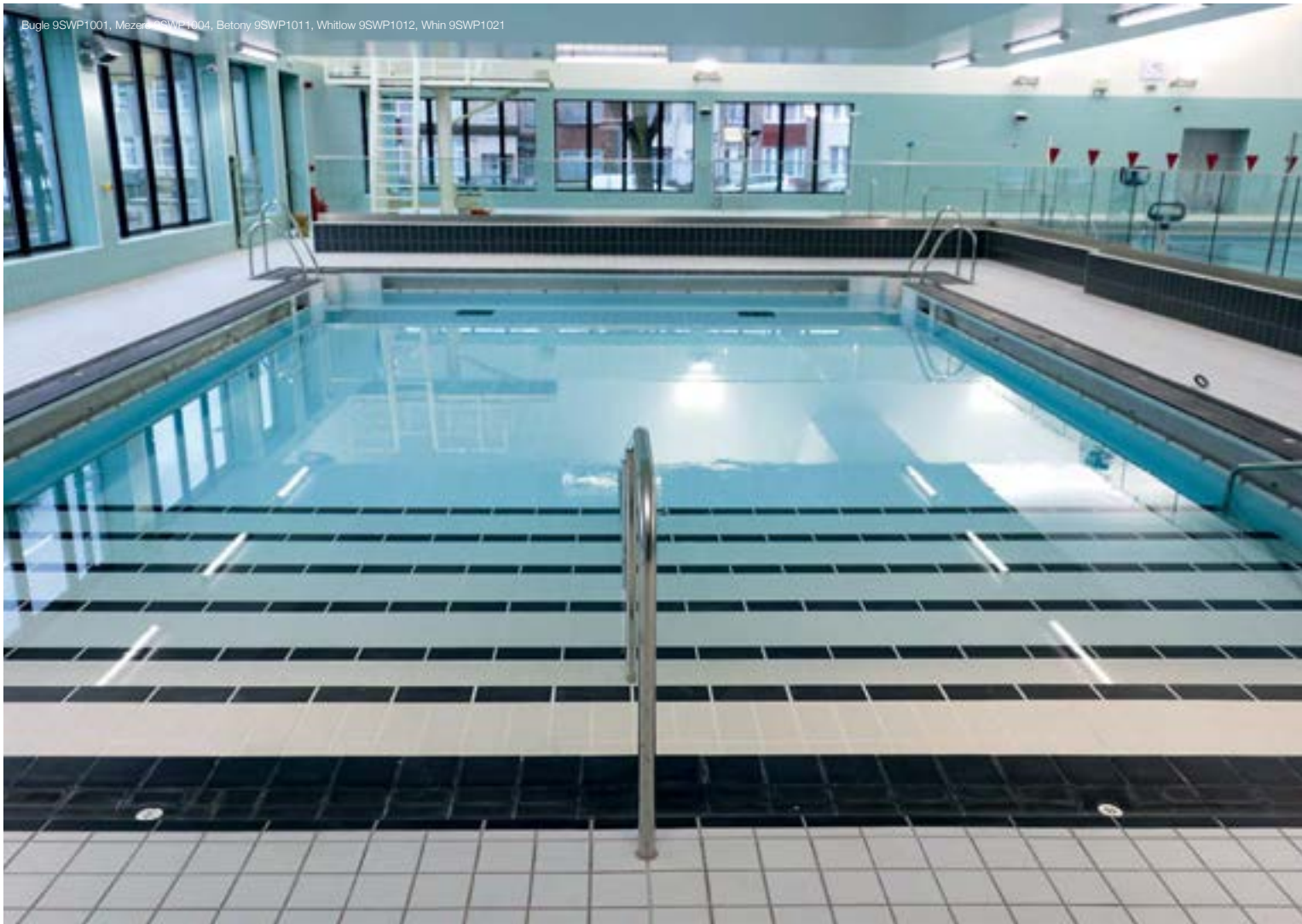
Available in **Matt, Polished, Honed, Structured R11 (A+B+C), Anti Slip R12 (A+B+C) and Anti Slip R13** finishes. PTV results available upon request.
11 sizes are available, from **100x100** to **900x900mm**. Please call for more details.

Brexon 2RPV401	Hirwaun 2RPV407	Newtonmore 2RPV416	Kingussie 2RPV417	Gairn 2RPV415	Ammanford 2RPV403	Permian 2RPV422	Kilkenny 2RPV525	Aviemore 2RPV432	Claribone 2RPV546	Crickhow 2RPV405
Moy 2RPV529	Garten 2RPV418	Bann 2RPV528	Garnant 2RPV406	Llandeilo 2RPV409	Llangatt 2RPV411	Finn 2RPV519	Mesozoic 2RPV423	Ballater 2RPV420	Abercrave 2RPV402	Tugela 2RPV507
Carnian 2RPV425	Benuel 2RPV510	Mayoe 2RPV513	Nebulous 2RPV439	Wexford 2RPV523	Eternity 2RPV440	Erne 2RPV524	Tipperary 2RPV520	Flyma 2RPV506	Cairngorms 2RPV431	
Olenkian 2RPV428	Lemonade 2RPV473	Wicklow 2RPV526	Jungle 2RPV435	Dillingham 2RPV446	Emmonak 2RPV447	Ruddy 2RPV472	Ladinian 2RPV426	Spangle 2RPV436	Flesk 2RPV530	



FAIRFIELDPOOL

PROJECT



FAIRFIELD POOL

PROJECT

Impressive swimming pool refurbishment in Dartford

Working alongside the highly experienced team at Hydrospec, Solus Ceramics were delighted to supply more than 700m² of technical pool tiles to the recently refurbished Fairfield Leisure centre in Dartford.

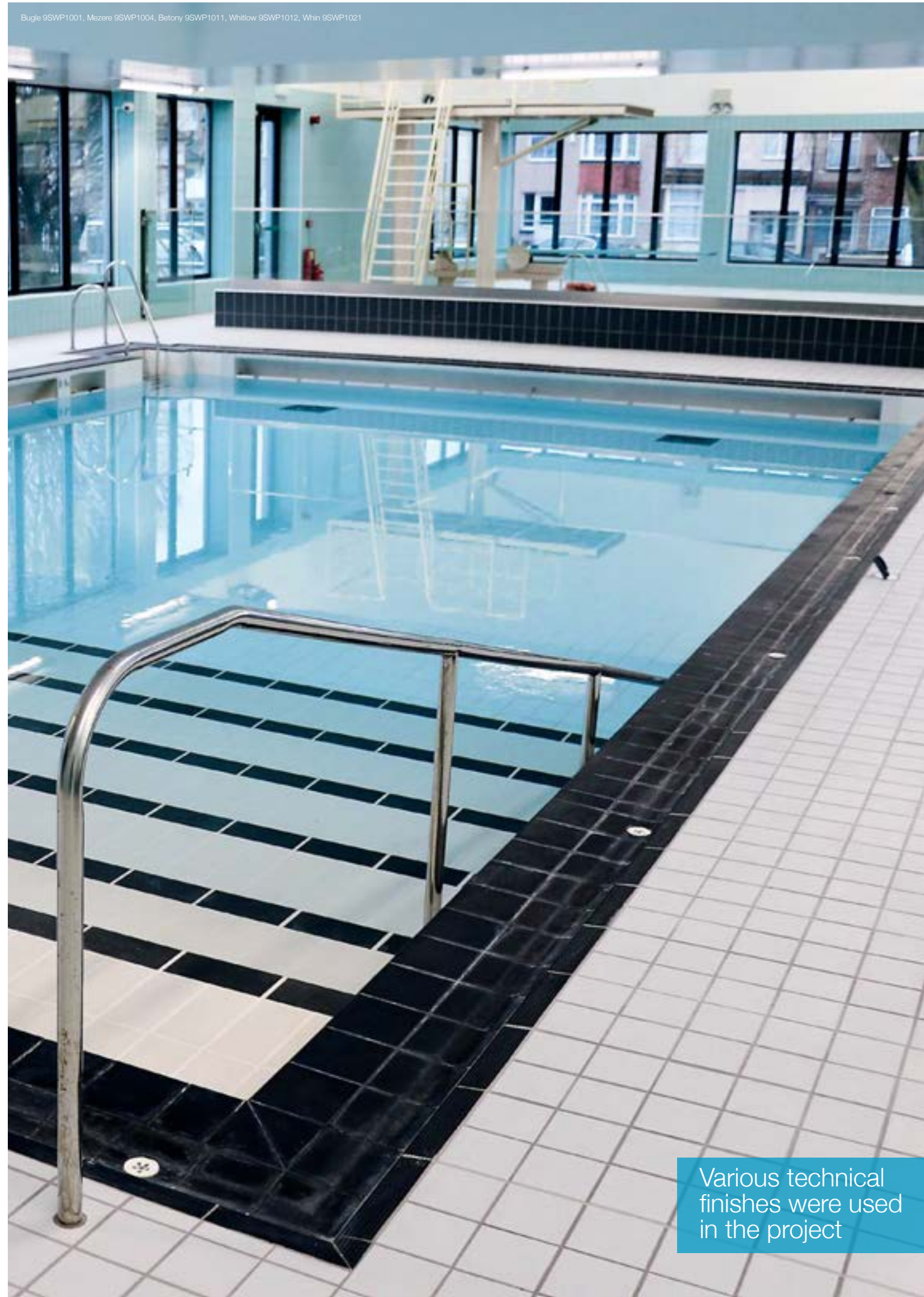
The project, which was part of a vast redevelopment of the aging 40-year-old facility, began at the end of March 2014, when the centre operators contract expired, and the doors were closed to the public.

Nearly two years later the new management reopened the revitalized leisure centre to reveal a major refurbishment and substantial investment in the facilities.

Along with a beautifully appointed 25 metre, six lane flagship pool, the leisure centre also offers a poolside sauna, a diving area, a smaller training pool, a 95 station gym, exercise studios and a new café.

The main contractor on the project was Willmott Dixon and Hydrospec carried out the design and refurbishment of the pool and teaching pool. An interesting project, the original pool was strategically over tiled, which meant that the area could be more efficiently refurbished.

Hydrospec selected highly technical, specialist swimming pool tiles from the Technical Pool range. Manufactured to incredibly exacting standards, with



Various technical finishes were used in the project

the most advanced production processes, these tiles are ideal for both heavily used commercial projects and stylish residential swimming pools.

More than 480m² of 125x250mm icy white friction finish tiles were laid in the swimming pool tanks along with matching satin finish tiles, quadrants and corner caps. Other products included beige and black pin head tiles, which offer superior slip resistance and a range of complementary blue tiles in varying shades.

In addition, a bespoke access staircase was built into the pool, which was also clad with tiles from the Technical Pool range.

A special pool entry was created during the refurbishment. The pin head tiles provide excellent slip resistance heightening safety during access



Zoe Syroka
Solus Ceramics Area Sales Manager
zoesyroka@solusceramics.com

A high quality, modern refurbishment, the pool at the Fairfield Leisure Centre in Dartford is a triumph of great expertise and high quality products.

The Technical Pool range offers the versatility to complete all manner of pool projects from standard installations to complex and technical swimming pools.





PROJECT

THE PASSAGE



THE PASSAGE

PROJECT

A light, modern and uplifting space to call home

Working with the team at BuckleyGrayYeoman, Solus Ceramics were delighted to supply tiles to St Vincent's Centre, a building complex that houses The Passage, a charity that helps homeless people.

Located on Carlisle Place in London, the newly refurbished building involved the part-demolition, strip out and reconstruction of three adjoining buildings to raise them to modern day standards and to cope with the increasing demands of providing adequate care for the homeless people of London.

The project, which is a stones throw from Victoria Station, features a new reception, a dining area,

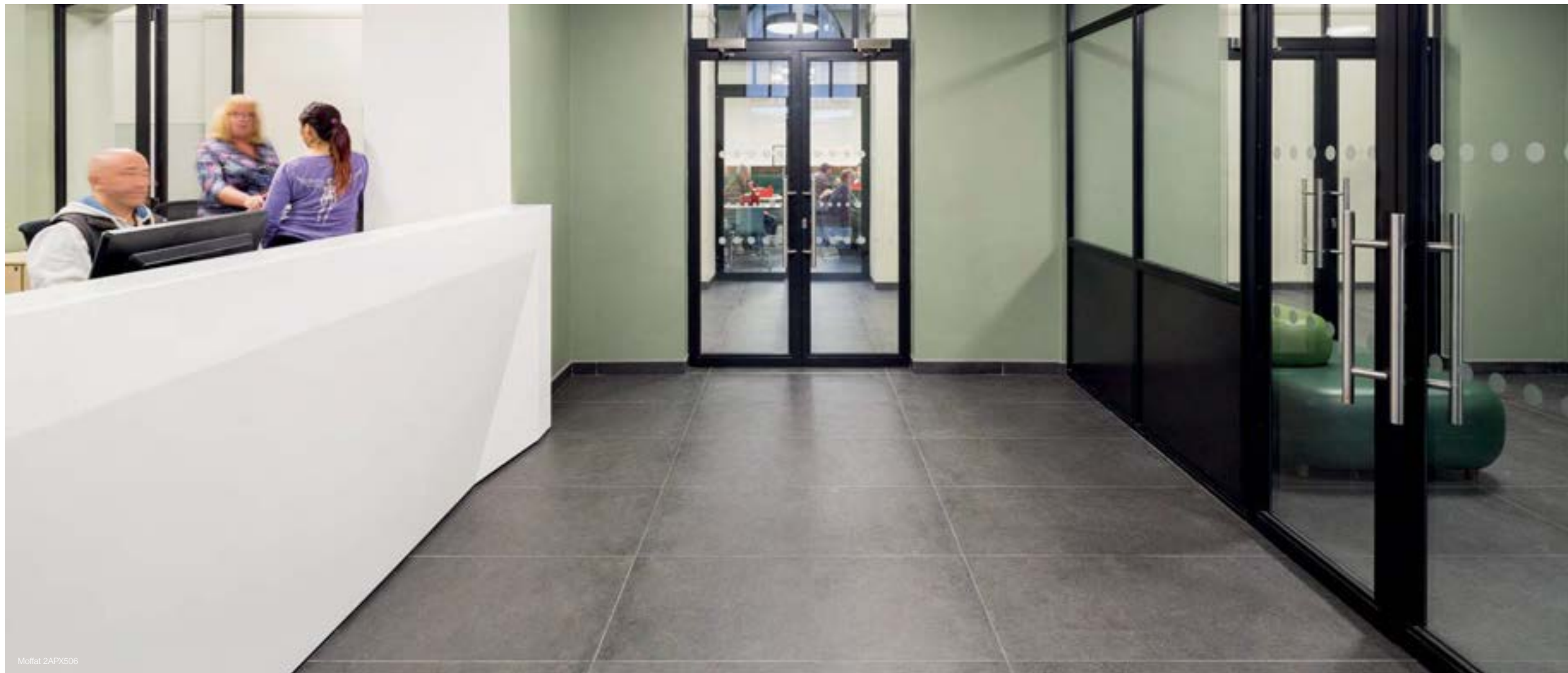
bathroom facilities, accommodation, training centres and libraries, as well as self contained apartments, a gym, a women's refuge and office space for The Passage to run from.

A main priority for the architects was to create a space that was easy to maintain and would stand up to heavy, long term use. Working with Solus Ceramics, the design team selected quality porcelain ranges that are widely used in heavy traffic commercial projects.

Durable and stylish, tiles from the Monolith range in a 600x1200mm size were used throughout the ground floor of The Passage. Connecting the reception to the communal areas, the large format

Finishes in staff and communal areas are exactly the same, emphasising the concept of equality





Moffat 2APX506

tiles provide minimal grouting and a solid, smooth finish. The use of the same colour and size also creates a flowing sense of continuity and sees the tiles line up perfectly throughout. This layout welcomes visitors, encouraging them to move freely from room to room.

In addition, Solus Ceramics supplied large format anti slip floor tiles from the Tectonics range to shower floors and external areas as well as classically stylish gloss wall tiles from the Interiors and Glisten ranges. The idea of maintenance was key and the simple durable tiles are easy to clean whilst affording very high technical characteristics.

Successfully opened at the start of the year the completed building has been well received, and is providing an uplifting environment that is helping clients to transform their lives.

The textured anti slip tiles are almost indistinguishable from the other floor tiles, retaining the flow of the project



Moffat 2APX506



Spurrey 3RIG101, Skin 2RPV326



Pete Toule
 Solus Ceramics Area Sales Manager
 petetoule@solusceramics.com

“ *Tried and tested, the Monolith and Spurrey tiles used in this project offer great value, high levels of durability and excellent slip resistance.*

The large formats are perfectly suited to the scale of the building and give a sense of a continuous floor rather than a grid and are not lost in a space with such high ceilings.

”

SPECKLED RANGE

Absorb 2RPV459

TECHNICI GRES 4

**HIGHLY TECHNICAL
TILES** AVAILABLE IN A
HUGE **VARIETY OF SIZES**



Drape 2RPV460

A practical range featuring both lightly and heavily speckled colours

Practical everyday style ideally suited for commercial projects, Technici Gres 4 is a highly technical range of porcelain floor and wall tiles available in a huge variety of colours and sizes.

Divided into two distinct groups, the range features 22 lightly speckled colour options, and 12 tones that are heavily flecked with larger notes.

The finely speckled colours include a wide choice of soft beiges, numerous warm and comforting taupes and a versatile variety of smooth grey shades.

In addition, designers can also make use of a series of more intrepid colours including dusty blues, and dreamy greens. All of these tiles are lightly misted with very subtle light and dark particles.

Technici Gres 4 also welcomes a selection of largely speckled colour choices, which by and large echo the colours found in the finely speckled group. In contrast though, these tiles feature more bold and distinctive flecks that have a wider variety of tonal differentiation from the core colour. These large fragments add a huge sense of character and eye-catching detail.



Palsk 2RPV462

Perfect tiles for areas with high footfall and extensive wear

A versatile and extensive range, Technici Gres 4 includes a vast variety of size options from small 100x100mm tiles through to typical 300x300mm squares to larger 600x600mm pieces. Interestingly many of these sizes are available in a choice of thicknesses, which means that certain tiles can be used in a wide variety of circumstances from walls to floors and from interior to exterior.

Finally the tiles in this range are available in a number of finishes including Matt, Polished, Structured R11 (A+B+C), Anti Slip R12 (A+B+C), and a special Anti Slip R13 format. Size and finishes differ in availability from colour to colour, so for an extensive break-down of availability, Solus Ceramics recommend users to carefully check the product literature, or ask a member of the team.

Beautiful in modern commercial environments and trendy spaces



Boron 2RPV461



Drape 2RPV460



Felinfach 2RPV408

TECHNICI GRES 4 FINISHES, COLOURS AND SIZES:

[click here for more information about the Technici Gres 4 range](#)

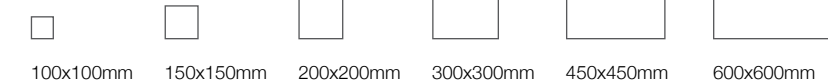
Available in **Matt, Polished, Structured R11 (A+B+C), Anti Slip R12 (A+B+C)** and **Anti Slip R13** finishes. PTV results available upon request.

FINE SPECKLES

Felinfach 2RPV408	Dehar 2RPV535	Piling 2RPV549	Nethy 2RPV419	Renaë 2RPV541	Lachen 2RPV458	Abergav 2RPV404	Saba 2RPV539	Brannit 2RPV454	Strelli 2RPV547	Merthyr 2RPV412
Naval 2RPV451	Palgrun 2RPV453	Jazmin 2RPV537	Noten 2RPV548	Dusken 2RPV450	Cohen 2RPV540	Bunker 2RPV449	Llandoverly 2RPV410	Landsale 2RPV505	Franc 2RPV538	Touchdown 2RPV437

LARGE SPECKLES

Felted 2RPV467	Hattie 2RPV544	Paco 2RPV545	Palsk 2RPV462	Boron 2RPV461	Plandro 2RPV464	Perrie 2RPV542	Tollie 2RPV543	Drape 2RPV460
Sprinkle 2RPV465	Flecker 2RPV468	Absorb 2RPV459						



Meet

Michael Irvine,

Area Sales Manager based in London.
by Paul Shepherd

During a flying visit to Solus Ceramics' head office in Birmingham, I took the opportunity to grab an interview with one of our most experienced Area Sales Managers, Michael Irvine.

What is it like working in the specification industry in 2016 and what should we expect to be trending in the next year? With 11 years experience at Solus Ceramics and hundreds of fabulous projects under his belt, surely Michael can give us some insight!



When did you join Solus Ceramics?

I joined the sales team in 2005 when I was 23 years old. Before joining the company I'd been working in the retail sector of the tile industry, first as a Saturday assistant, then as a full time sales person and eventually as a Store manager at several branches of Tile Magic.

The company must have changed a great deal in the past 11 years?

There was a lot less of us on the road when I joined and the supporting departments were really in their infancy. Now we have over 80 staff at our head office, a modernised warehouse and an in-house marketing team. Our marketing has moved on over the past 11 years and it really helps that new people I meet have already heard good things about Solus Ceramics.

Tell us a little about your job role, whom do you work with?

I work alongside interior designers, architects and also contractors. I listen carefully to technical and design requirements and showcase products that I believe will best meet the brief. I work on a range of projects including bars and restaurants, hotels, commercial fit outs as well as schools, colleges and swimming pools.

What is your favourite type of project and is there an example that stands out?

Bar and restaurant projects are my favourite because they tend to push the creative boundaries. It's possible to put forward interesting shapes and colourful finishes that you would not normally see in commercial projects. A Drake & Morgan bar by Fusion DNA called The Drift is one of my favourite projects. The design features lots of contemporary wall tiles and a dramatic bespoke mosaic in the upstairs bar area. This bar is well worth a visit just to see the fabulous design and of course enjoy a drink and something to eat.

What are your top tile trend picks for 2016, and do you have any forecasts for the future?

Marble effect porcelain tiles are very popular this year and the Palace range seems to be a favourite. Unusual shaped tiles are also always in demand, I think rhombus shapes are the 'new' hexagon! My favourite trend-setting range is our Format collection which is a distressed concrete look tile that ticks all of the boxes. Interestingly the tiles in this range have a smooth texture but are hitting over 36 in the wet Pendulum tests we have conducted so its proving to be very popular as the tiles meet both the aesthetic and technical demands of public accessible projects.



The Drift

“ A Drake & Morgan bar by Fusion DNA called The Drift at the Heron Tower is one of my favourite projects ”



Michael is based in South London and covers the south east and south west of the capital as well as Surrey and West Sussex.



EXPERIENCE CPD SEMINARS WITH SOLUS CERAMICS

Solus Ceramics are proud to offer a number of CPD seminars to professionals in the design industry. As part of their continuing commitment to customer support, CPD seminars are totally complimentary to any interested parties including past clients and new contacts.

These CPDs, which are all themed around the subject of tiles and tile installation, will help you to develop your knowledge and appreciation of diverse tile related subjects such as safety information, innovative tile products, British Standards and sustainable tile production.

CPDs can be arranged at a time to suit you and can be held at a your own workplace or a meeting point of your choice, as long as sufficient facilities are available.

Alternatively, Solus Ceramics welcome you take part in CPDs at their Birmingham HQ or The Creative Centre. In addition to taking part in one of our many CPD seminars, which is presented by a member of our experienced and knowledgeable team, Solus Ceramics will also provide a free lunch.

Solus Ceramics are happy to accommodate both small, intimate gatherings and large scale group sessions.

Booking a CPD seminar could not be easier.

Scan the desired CPD QR Code or
www.solusceramics.com
 0121 753 0777
Info@solusceramics.com

MEETING THE INDUSTRY'S NEEDS

The main aims of this seminar are to:

- Provide the specifier with ongoing technical and product information as part of continuous professional development
- Discuss subjects which will help the specifier utilise floor and wall tiles avoiding any potential issues
- Provide knowledge and technical support in all areas of supply right through to installation
- To ensure correct detailing for the laying and application of ceramic and porcelain tiles

Duration: 45 to 60 minutes

The seminar includes information on the equalities act and British Standards, as well as Slip Resistance requirements, wet area tiling, movement joints, NCS colour scheme, calibration and corundum inserts.

DON'T SLIP UP!

This bespoke seminar will provide you with:

- The latest guidance on anti slip floor tiles and the testing procedures
- A video demonstration of the ramp test (DIN 51130 and DIN 51097) and live demonstrations of the Wessex pendulum machine and surface roughness meter
- Up-to-date HSE anti slip guidelines for commercial floor tiling
- Specific project risk assessment, function before form
- Site conditions, user behaviour, possible contaminants, maintenance

Duration: 45 to 60 minutes

20 YEARS

1995-2015

- 20 Years experience in the tiling industry
- 20 Years of forging manufacturer relationships
- 20 Years of building trust
- 20 Years of success