



**GROUND  
FLOOR**

# 1 CLINK ST.

*An exceptional mixed use building*

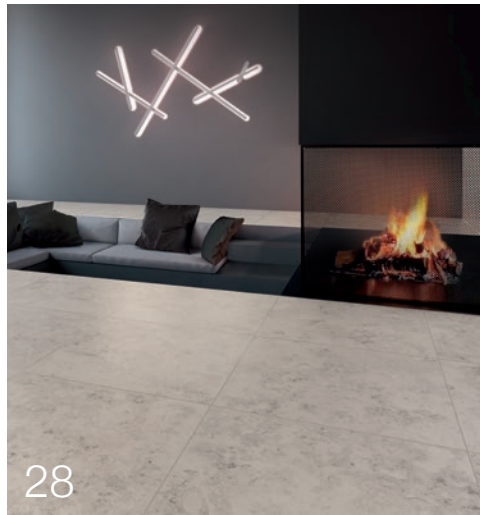
Explore the residential and commercial spaces at 1 Clink Street, a stunning development situated just moments away from London's iconic Borough Market.

**ARCHITEK**  
URBAN CONCRETE STYLE

**MILESTONE**  
LIMESTONE EFFECT

**WESTSIDE**  
AN OFFICE RENOVATION

**ISSHO**  
A CONTEMPORARY EATERY



28



58



16



10



52



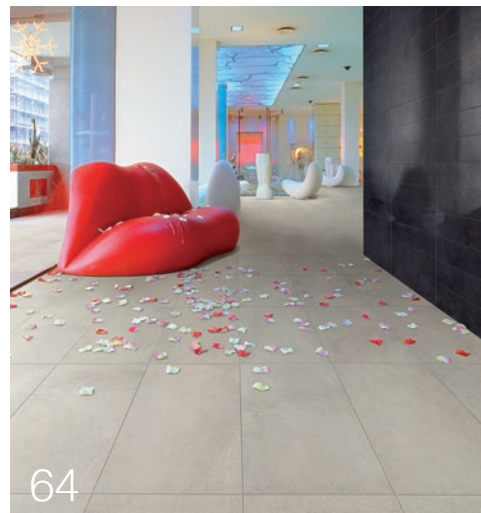
46



40



22



64



04



34



70

# quarter<sup>7</sup>

PETER BENTLEY  
peterbentley@solusceramics.com  
Chairman

MARCUS BENTLEY  
marcusbentley@solusceramics.com  
Managing Director

RYAN BENNETT  
ryanbennett@solusceramics.com  
Finance Director

STEPHEN BAKER  
stephenbaker@solusceramics.com  
Commercial Director

DAVID OVERTON  
davidoverton@solusceramics.com  
Sales Director

PAUL SHEPHERD  
paulshepherd@solusceramics.com  
Editor

RICARDO JARDIM  
ricardojardim@solusceramics.com  
Designer

### LONDON REGIONAL SALES

JO BURLEY  
joburley@solusceramics.com  
West Central

PETE TOULE  
petetoule@solusceramics.com  
East Central and East

MICHAEL IRVINE  
michaelirvine@solusceramics.com  
South West Central and South East Central

JOHN ROSE  
johnrose@solusceramics.com  
Central, North West and North

MARK AYLIFFE  
markayliffe@solusceramics.com  
South West and South East

BARRY TEASDALE  
barryteasdale@solusceramics.com  
West, South West, South London and South East England

### ENGLAND, WALES AND SCOTLAND REGIONAL SALES

ROSS MURRAY  
rossmurray@solusceramics.com  
Scotland and Northern England

CLAIRE HULME  
clairehulme@solusceramics.com  
North West England and North Wales

DARRELL COOK  
darrellcook@solusceramics.com  
North East and East England

MARK WRIGHT  
markwright@solusceramics.com  
Midlands

ZOE SYROKA  
zoesyroka@solusceramics.com  
East Midlands and NW Home Counties

RICHARD BARON  
richardbaron@solusceramics.com  
Wales and South West England



Head Office & Solus Tile Studio  
Unit 1, Cole River Park,  
285 Warwick Road,  
Birmingham, B11 2QX  
0121 753 0777  
sales@solusceramics.com

Baker Street Showroom  
9 Baker Street,  
London, W1U 3AH  
020 7935 7355  
thecreativecentre@solusceramics.com

# CONTENTS

- 04 Architek, new range. Sophisticated concrete tiles
- 10 No.1 Clink Street. An immersive mix-use building
- 16 Equinox, new range. Shimmering and infinitely tactile
- 22 London Stadium. The legacy of London 2012
- 28 Pioneer, new range. Eclectic stone effects
- 34 Issho Kori Bar. A unique Japanese restaurant
- 40 Treasure, new range. Vintage patterned tiles
- 46 Tamburlaine. A hotel fusing modern and traditional design
- 52 Milestone, new range. Highly speckled limestone
- 58 Westside. A refurbished office project
- 64 Chiltern Stone range. Practical and reliable porcelain
- 70 Open Pedestal Systems. Guidance and applications
- 74 Solus Ceramics CPDs. Free seminars for you to experience

## Editor's letter



Paul Shepherd  
editor  
paulshepherd@solusceramics.com

WELCOME TO THE 12<sup>TH</sup> ISSUE OF QUARTER, which may well be the last time you see the magazine in its current guise! Our subscribers will be aware that we recently conducted a reader survey about the current design and content of the magazine, and we hope that in the next issue you will see some of the constructive feedback we received come to fruition.

That being said, issue 12 is business as usual and you can look forward to reading about some fantastic new tile ranges that we are launching to coincide with our attendance at 100% Design 2017.

In addition, we have also covered a variety of exciting tiling case studies including the breath-taking Westside, the beautiful Tamburlaine hotel and the amazing London Stadium.

*Paul Shepherd*

“exciting tiling case studies including the breath-taking Westside”

# ARCHITEK

SOPHISTICATED CONCRETE EFFECT TILES



NEW CONCRETE EFFECT RANGE



## Contemporary concrete effect slabs with a particularly urban feel

Introducing the Architek range, a versatile concrete effect porcelain material that has been specifically created to complement urban influenced architectural projects.

A modern, decorative aesthetic suitable for both commercial and residential applications, Architek is offered in a selection of five soft colour tones.

As well as the more typical concrete inspired grey shades; the range also includes a surprising choice

of warmer colours such as a sandy beige and a modern ivory.

Unlike other concrete effect tile products that echo the rustic, raw characteristics of concrete, the Architek range portrays a more refined aesthetic with subtle tonal variations and understated textural movement.

Available in a practical Natural R10 finish, the tiles are smooth yet possess a slightly uneven grain, which only adds to the illusion of a concrete texture. ▶

Lightly flecked with concrete tones

Consisting of slabs that always differ from one another, Architek is manufactured in three rather unique formats: 375x755mm, 755x755mm and 755x1510mm, and two different thicknesses.

Stain, frost, chemical and sunlight resistant, the Architek range is ideally suited to a large range of public and private works and is guaranteed to withstand the rigours of footfall, weather, spillages and stains. ♦

A versatile range suited to the needs of modern architecture



Designer 2FJY101



Create schemes encompassing floors and walls

Builder 2FJY105



Structure 2FJY102

ARCHITEK FINISH, COLOURS AND SIZES:

Available in **Natural R10** finish. PTV results available upon request.

For more information about the Architek range please visit our website.



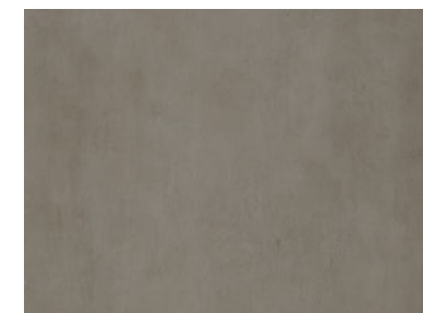
Builder 2FJY105



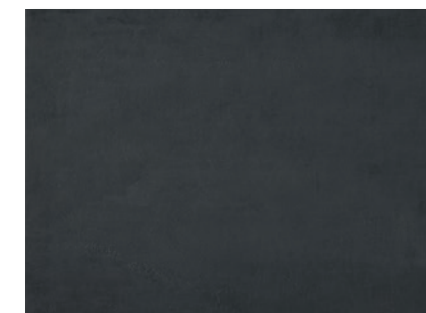
Structure 2FJY102



Designer 2FJY101



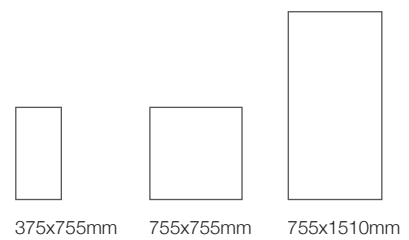
Planner 2FJY104



Enginner 2FJY103



Décor. 755x1510mm. Available in all colours.



375x755mm 755x755mm 755x1510mm

# N\_01 CLINK ST. SE1



PROJECT



## NO.1 CLINK STREET

### PROJECT

#### *A mixed-use building immersed in the history and culture of Borough Market*

No.1 Clink Street is a mixed-use building situated in one of the oldest parts of London and just moments away from the iconic Borough Market.

Once London's "entertainment" district this area was known for its public theatres, cobbled streets and as the historic location of the notorious Clink Prison, giving rise to the slang phrase 'in the clink'.

In the 18<sup>th</sup> century during the industrial revolution, the nature of the area evolved and became synonymous with docks, warehouses and wharfs. The area has continued to evolve and now offers one of the most vibrant and charming locations London has to offer.

Led by the team at SPPARC, a prominent London based architectural firm, No.1 Clink Street underwent a stunning refurbishment and extension, which facilitated the creation of several open-plan offices and new residential apartments. Solus Ceramics were delighted to supply a range of tiling solutions to the project in both the contemporary loft style living spaces and the renovated warehouse offices.

Brick effect tiles from the aptly named Brickwork range were used throughout the residential and commercial areas of the project on many external-facing walls. Selected in a chic white shade, the tiles were chosen as they closely resembled the existing exposed brickwork inherited from the original architecture. ▶



THE RECEPTION AREA FEATURES A DISTINCTIVE INDUSTRIAL AESTHETIC

With its modern industrial design, concrete plays an important role in the aesthetic of No.1 Clink Street. Whilst the architects initially explored the use of authentic concrete slab tiles, Solus Ceramics led the design team to consider the Horizon range.

These beautiful, concrete effect tiles feature a dynamic array of cement-like textures and tones, accurately conveying the sense of concrete, but in the thin and durable form of porcelain.

Seen in the residential bathrooms, the office WCs and in the chic industrial reception area, the designers used an array of large format pieces, bespoke cut sizes and different finishes.

Finally, tiles from the influential Illustrate range were applied in the reception stairway and select residential dwellings, including a spectacular glazed garden room overlooking the majestic River Thames.



Ormonds 2BRK006



Ormonds 2BRK006

THE DESIGNERS REQUIRED A VARIETY OF BESPOKE CUT TILES FOR THE BATHROOMS



Push 2PYN005



Segovia 2MOE049



Ormonds 2BRK006, Manja 2MOE005

### Our view



Michael Irvine  
Solus Ceramics Area Sales Manager  
michaelirvine@solusceramics.com



The Horizon range is one of my personal favourite concrete effect ranges, with each tile showcasing an impressive diversity of random scratches, speckles and chips, typically seen in real concrete.

I particularly appreciate how the designers utilised large format tiles especially in the bathrooms, which provides the rooms with a sense of space and grandeur that is often missing from apartments in the city.



For more information about this project please visit our website



# EQUINOX

CHARACTERISED BY GENTLE  
TEXTURES AND GLOSSY HIGHLIGHTS

NEW CONCRETE EFFECT RANGE



## Soft, tactile tiles enriched with delicate, shimmering silky splashes

A brand new tile range suitable for use on both walls and floors, Equinox is a full-bodied porcelain material inspired by polished concrete resin.

A stunning architectural surface covering, Equinox is available in five different colours, centred on a neutral palette of urban shades.

From a frosty white, to a stunning anthracite grey, Equinox provides a depth of choice for users searching for the perfect monochrome tile.

One of the most interesting features of this range is the unusual and unique surface texture. Reminiscent of the characteristics of high quality leather, the tiles feature distinctive yet soft natural imprints and a random array of smooth cracks.

These interesting visual aspects are further emphasised by beautiful and artistic silky speckles that provide a glimmering sheen to different parts of each tile. As ambient light moves across the surface of the tiles, the observer will witness an evocative dance as the subtle highlights gently shimmer and shine. ▶



Tiles glimmer  
with silky notes



Nightshade 2MAG101



Each individual tile features a random array of silky swishes

Duster 2MAG105

Available in a practical Natural R9 finish, Equinox is suitable for almost any residential application and in light commercial projects.

Considered a 'large format' range, users can explore a 450x900mm rectangle size, an impressive 900x900mm square size, or an enormous 900x1800mm format, all of which can be applied to both floor areas and walls.

A new and interesting range that pushes the boundaries forward on concrete style, Equinox offers a distinctive and ever changing architectural aesthetic. ◆



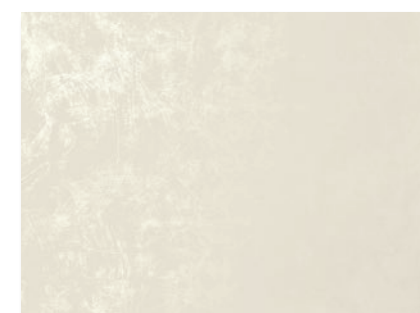
Duster 2MAG105

Soft leather-effect textures adorn the surface of each tile

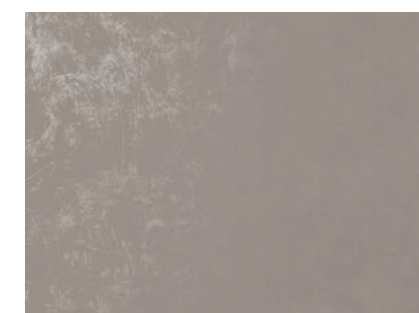
### EQUINOX FINISH, COLOURS AND SIZES:

Available in **Natural R9** finish. PTV results available upon request.

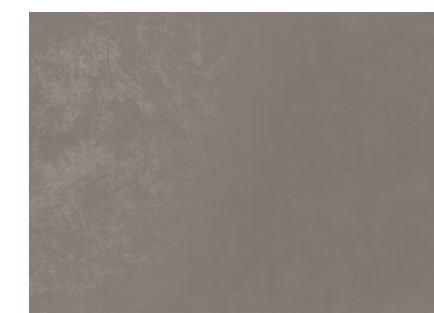
For more information about the Equinox range please visit our website.



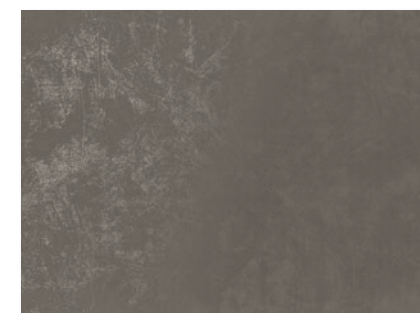
Polar 2MAG103



Solstices 2MAG104



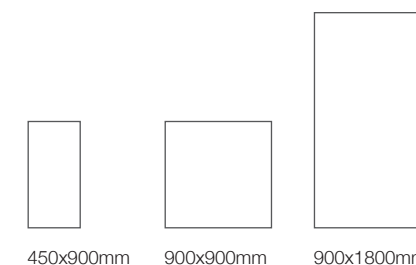
Duster 2MAG105



Bambos 2MAG102



Nightshade 2MAG101





# LONDON STADIUM PROJECT



Images courtesy of Guy Archard

# LONDON STADIUM

## PROJECT

### *Stadium transformation assures Olympic legacy in east London*

Since the Olympic Games left London spellbound in 2012, the stadium that has become the home of West Ham United has been transformed from an Olympic venue to a multi-use football and athletic stadium.

Charged with designing permanent hospitality spaces, strategic design consultancy 20.20 needed to balance the needs of stakeholders such as West Ham United, Newham Borough Council and UK Athletics, while creating innovative spaces that were fitting for the legacy of the stadium.

Using their expertise in sports stadia projects, the designers brought nine unique spaces to life, developing a commercial hospitality offering that celebrates as well as it serves; flexing to suit any multi-purpose event in the sports calendar without losing the legacy of 2012.

Solus Ceramics were delighted to work with 20.20, supplying a huge variety of material throughout the club, including many restaurants and bars, each of which were designed to evoke the clubs heritage and east London roots. ▶



RUSTIC LIMESTONE EFFECT TILES FROM THE VITTORIO RANGE WERE USED IN THE RECEPTION AREA

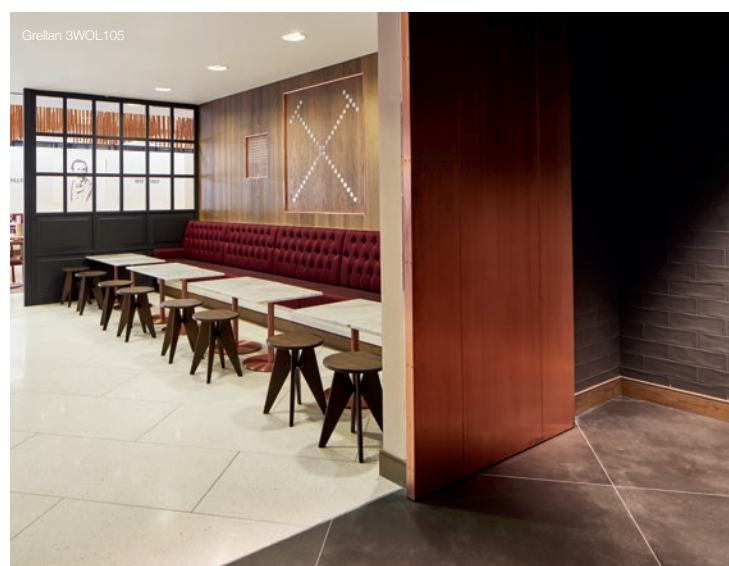
The Royal East, which celebrates the iconic events and outstanding achievements of east London, features a contemporary design that takes inspiration from the area's regal connections, from the Royal Docks to the Boleyn Grounds.

The chic and elegant bar, as well as the reception area, features dynamic hexagon tiles from the popular Honeycomb range. A warm trio of honeyed autumnal colours were selected, which perfectly complements the majestic and timeless space.

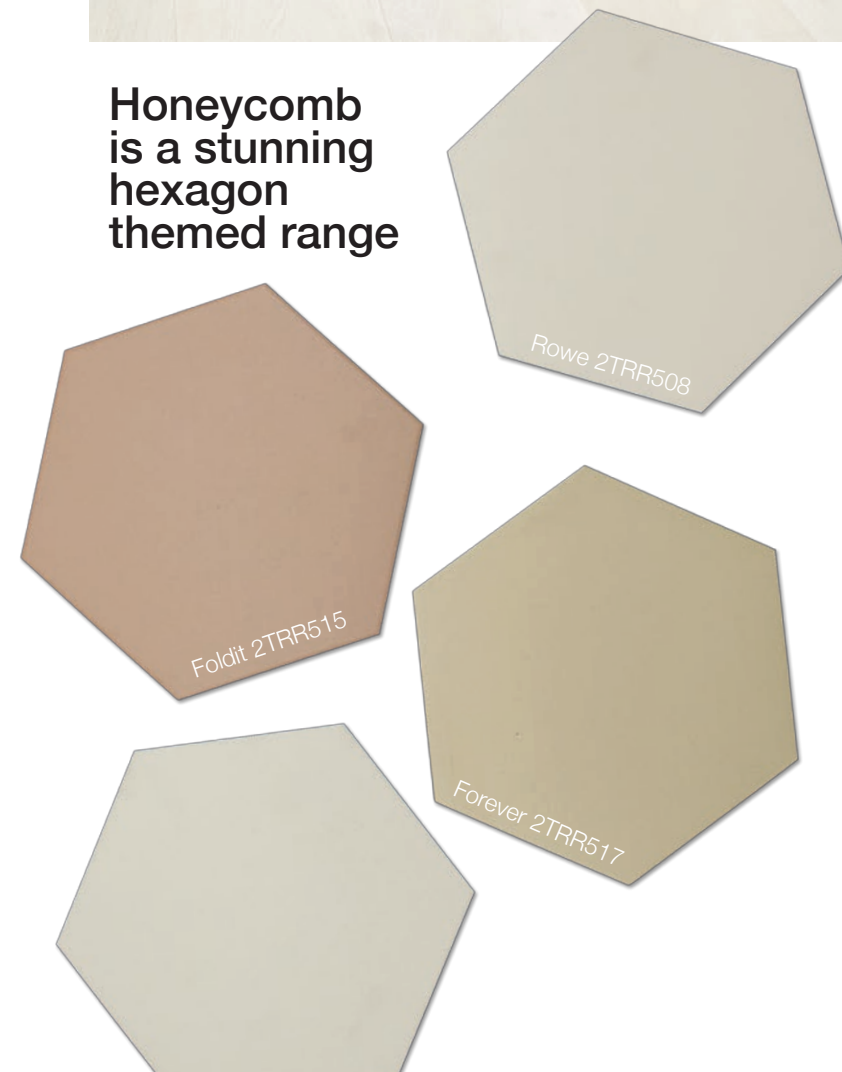
The Forge 1895 celebrates the craftsmanship of the Thames Ironworks' founding fathers and features a variety of interesting porcelain materials, from the stunning marble effect Masterpiece range as seen on many of the feature walls, to the chic style of the concrete effect Monolith range.

Finally, in the sweeping entrance of The Arnold Hills, large format 1200x1200mm speckled tiles from the Vittorio range take centre stage, welcoming guests with a beautiful inset logo.

Following a public and jury vote, the London Stadium won StadiumDB's Stadium of the Year Award 2016, voted for by a jury of five experts. ♦



Honeycomb is a stunning hexagon themed range



Rowe 2TRR508

Foldit 2TRR515

Forever 2TRR517

Our view



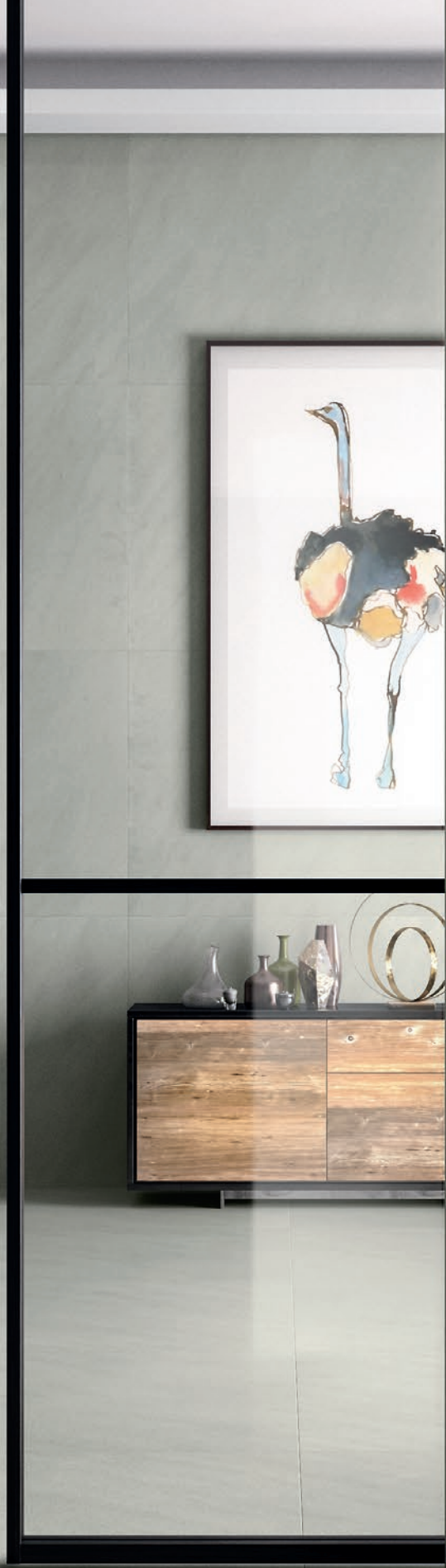
**John Rose**  
Solus Ceramics Area Sales Manager  
johnrose@solusceramics.com

“The London Stadium was an extensive and complex project that required a diverse variety of different materials to suit each area. In addition to the assortment of large format flooring tiles we supplied, the subtle details threaded through each scheme, such as the inviting hexagon tiles from the Honeycomb range, truly complement the overall aesthetic that the designers were striving to achieve.”

For more information about this project please visit our website

# PIONEER

CONVEYING THE LOOK OF A WIDE VARIETY  
OF NATURAL STONES





Hadid 3NGY102

## An eclectic range made up of many different interpretations of genuine stone

New to Solus Ceramics' impressive portfolio of natural effect tiles, Pioneer is an intriguing range that takes inspiration from a multitude of different natural stones.

Gathered together in a single range, users can explore 13 totally unique effects that although may seem disparate, are related by the common theme of origin.

From marble to sandstone and granite, Pioneer draws influence from stone traditionally used in the construction industry, particularly materials that capture the memory of an 'old Europe'.

Some of our favourite options include the marble effect 'Nouvel', which is a reimagining of white and

brown veined Pietra Piasentina, and 'Eiffel' which is drawn from typical Swiss granite.

A complex and versatile range, Pioneer includes a total of six sizes, from typical to large format choices, and Natural R10, Grip R12 or Lappata finishes. However users must check each tile's technical information as these sizes and finishes are not universal across the entire range. In addition, as with all of Solus Ceramics' floor ranges, they can also provide matching skirting pieces, plinths and steps, meaning that designers can create complete and elegant schemes.

A distinctively natural range, developed with traditional European stones in mind, Pioneer is a new direction in porcelain style. ♦



### Inspired by traditional European stone

Pioneer interprets a wide variety of diverse natural stones from all over Europe, from sandstone to granite and even marble.



Avar 3NGY104





Unique and extraordinary natural beauty



Graves 3NGY103



Hooke 3NGY112

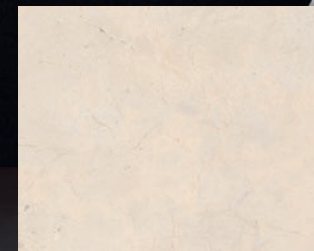
PIONEER FINISHES, COLOURS AND SIZES:

Available in **Natural R10**, **Lappata** and **Grip R12** finishes. PTV results available upon request.

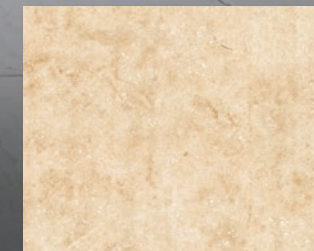
For more information about the Pioneer range please visit our website.



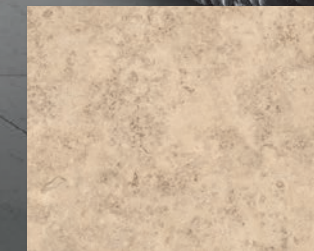
Moshe 3NGY108



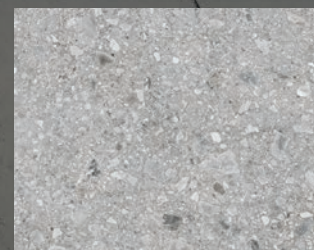
Hadid 3NGY102



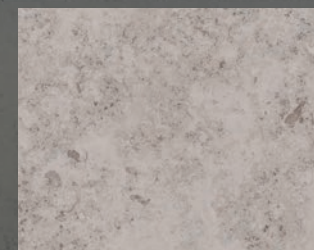
Eiffel 3NGY113



Graves 3NGY103



Norma 3NGY109



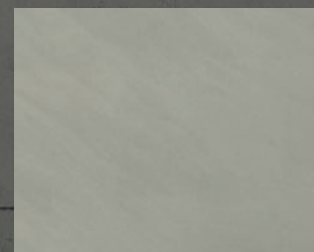
Alvar 3NGY104



Nouvel 3NGY107



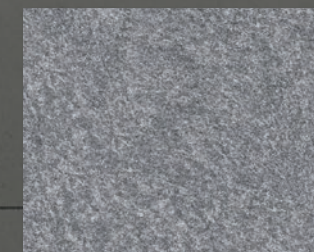
Gehry 3NGY105



Renzo 3NGY106



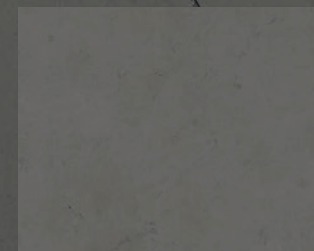
Jacobs 3NGY110



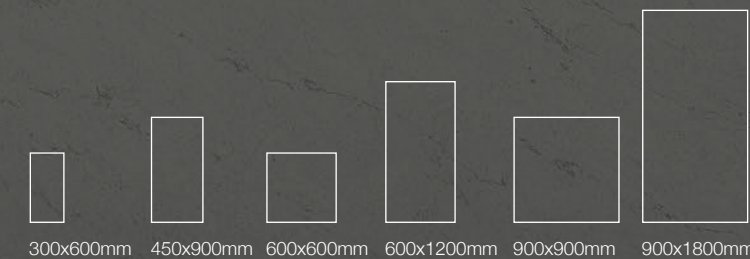
Rohgan 3NGY101



Olmsted 3NGY111



Hooke 3NGY112





# ISSHO | KORI BAR

PROJECT



# ISSHO | KORI BAR

## PROJECT

### *An authentic and refined Japanese fusion dining experience in Leeds*

Issho, a new Japanese restaurant and bar that overlooks the rooftops of Leeds, has opened in the city's Victoria Gate shopping district.

Issho, meaning together in Japanese, is the latest concept from luxury restaurant group D&D London, who have collaborated with award-winning designers DesignLSM on the project.

D&D London tasked DesignLSM to create a new sophisticated dining destination that drew inspiration from the heritage of the site, a former Victorian haberdashery, which would complement and enhance the delectable fusion cuisine on offer.

On arrival into the restaurant, visitors are greeted with a contemporary lobby featuring a striking reception desk dressed with intimate drapes and a dramatic fireplace wall.

A prominent feature of the space is 'The Kori Bar', which is set alongside the rooftop terrace and provides guests with the perfect setting for cocktails and the chance to sample the delights of traditional Japanese sake. The striking timber framed bar takes centre stage within the area, which is enhanced by an exquisitely lit monochrome ceiling artwork, specially commissioned by renowned Japanese designer Eley Kishimoto. ▶



TILES FEATURE A GREAT DEAL OF VARIATION, LEADING TO AN AUTHENTIC, NATURAL AESTHETIC



The designers utilised a bold and simplified palette for the scheme including traditional oak, marble style tiles, natural-edged porphyry stone and black charred timber, which is traditionally known as 'Shou Sugi Ban'.

The marble-look porcelain floor tiles were selected from Solus Ceramics' Palace range, a cutting-edge product that replicates the shades, veins, transparency and texture of marble.

The designers selected Alsek, which is a white and grey tile inspired by traditional vein cut marble. Each piece features an array of thick and thin grey veins in characteristic straight lines, perfectly capturing the evocative beauty of the natural material.

Finally tiles from Solus Ceramics Anti Slip range were applied in the kitchen space, along with bespoke cut, textured wall tiles which completed the bar area. ♦

THE FLOORING TILES ARE INSPIRED BY TRADITIONAL, VEIN CUT MARBLE



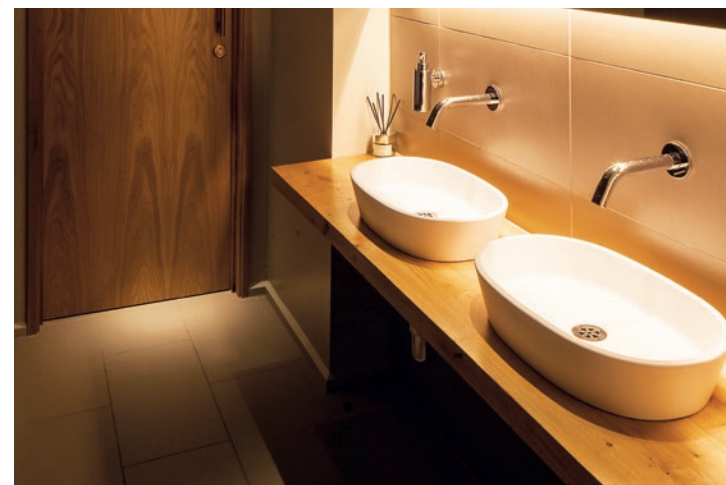
Alsek 3MOR005



Alsek 3MOR005

**A cutting edge marble effect porcelain range**

This visual shows Issho at a concept stage and how the marble tiles from the Palace range were envisioned in the scheme.



Our view



**Michael Irvine**  
Solus Ceramics Area Sales Manager  
michaelirvine@solusceramics.com



With marble being such a prominent and important part of the design scheme it was crucial to put forward a porcelain product that authentically evoked the correct aesthetic.

The Palace range, which is crafted using the latest digital technology, accurately portrays a wide array of marble from different regions from all around the world.

Ideal for both wall and floor applications, the tiles evoke a modern yet natural ambience.



For more information about this project please visit our website



© 2016 ZENOVIS

# TREASURE

EXPRESSIVE AND ELABORATE  
PATTERNED TILES

NEW PATTERNED RANGE



## Pairing vintage graphic patterns with a modern muted colour palette

Bringing a twist of vintage style to Quarter issue 12, Treasure is a stunning patterned range made up of five individual designs and a patchwork mix.

With a rubbed matt finish, Treasure provides a characteristic antique style, which is further emphasised by the unique and worn tonal quality of the different designs.

Themed around a subtle, muted colour scheme, the different patterns include a variety of shades including cool blues, trendy browns and delicate greens. Patterns range from traditional romantic motifs, to bold geometric prints and simple checkerboard designs.

A porcelain material, the tiles in the Treasure range are available in a universal 200x200mm size, and a Matt R10 finish. The tiles are suitable for residential and commercial zones, and can be applied to both floors and walls.

Tiles can be ordered in a single pattern and laid in a uniform grid, or mixed and matched to create borders, strips and other patterns.

Alternatively users can also select an established patchwork mix, which includes nine different patterns.

A dynamic and retro inspired range of interesting rustically drawn patterns, Treasure is a tile range just waiting to be discovered. ♦

Discover beautiful, rustic, imperfect patterns



Create uniform patterns or interesting patchwork designs



TREASURE FINISH, COLOURS AND SIZE:

Available in **Matt R10** finish. All tiles are **200x200x9.5mm**. PTV results available upon request.

For more information about the Treasure range please visit our website.



Eunom 2GBN001



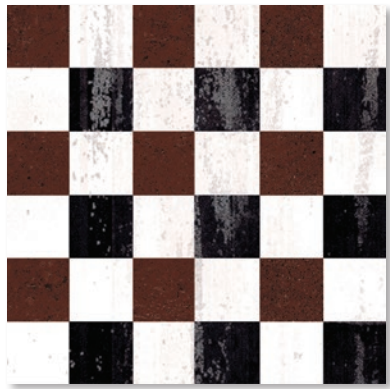
Eirene 2GBN002



Elpis 2GBN003



Hedone 2GBN004



Laddon 2GBN005



Chione 2GBN006  
Supplied as 9 random mixed tiles



# TAMBURLAINE

PROJECT





# TAMBURLAINE

## PROJECT

*A vibrant and exciting new hotel in the heart of Cambridge*

Located in the university town of Cambridge, Tamburlaine is a new 155-room luxury hotel from the Dublin-based O'Callaghan Group.

Situated close to the railway station, the property is a short stroll into the city itself and a stone's throw from many of the top attractions in the town.

Designed by the talented team at Bryan O'Sullivan Studio, the hotel joyfully fuses traditional and modern design, which echoes the heritage of the town along with its emerging prominence as a vibrant metropolis.

Tamburlaine's welcoming entrance has a dramatic double-height lobby with a dramatic feature staircase and overlooking library above.

The ground floor flows between four different food and drink areas, each with its own particular offering and all tied together with a sense of quality, provenance of local ingredients, attention to detail, and distinct design.

In the reception, visitors are met with a striking tiled floor design made up of white, red and black hexagon tiles from Solus Ceramics' Program range. ▶



HEXAGON TILES FROM THE PROGRAM RANGE DECORATE THE DOUBLE HEIGHT RECEPTION AREA

The rich and dramatic colour palette perfectly complements the unique library style aesthetic of the area, whilst the dramatic pattern only adds to the intricate sophistication of the space.

In the modern deli, Steam, Solus Ceramics supplied vibrantly patterned floor tiles from their emerging Treasure range. The eclectic and contemporary artisan eatery features the bold Elpis tile, which is emblazoned with a chic blue and grey geometric print, brought to life in a rustic hand painted style.

The Garden Room, which is truly like a page from The Secret Garden, offers guests an al fresco ambiance in the comfort of the hotel, and features a traditional black and white flooring pattern from Solus Ceramics' Victorian influenced Program 2 range.

Finally, if visitors take a visit to the botanical influenced bathrooms, they will be met with more inspirational tiling products from Solus Ceramics. 150x150mm tiles and various special pieces from the Diffusion range along with elegant mosaic floor tiles were used in both the male and female WCs. ♦



Heskoi 5VEL107, Lamarck 6ZLC270, Lena 6ZLC275



Eamont 5VEL106, Lamarck 6ZLC270, Lena 6ZLC275



Epis 2GBN003



Chinae 5VEL102, Eskdale 5VEL103

## Our view



**Pete Toule**  
Solus Ceramics Area Sales Manager  
petetoule@solusceramics.com



Tamburlaine is an eclectic and ambitious hotel that fearlessly explores a range of interior styles from traditional to modern, perfectly evoking the spirit of the area.

This meant that we as a tile supplier were able to put forward a dynamic variety of different materials from traditional glazed Victorian wall tiles to contemporary, patterned porcelain floor tiles.



For more information about this project please visit our website



# MILESTONE

FAITHFULLY REPRODUCING  
THE NATURAL BEAUTY OF STONE

NEW LIMESTONE EFFECT RANGE



Discovery 3WZ1101

## Highly speckled limestone effect tiles, lightly embellished with quartz flecks

New to Solus Ceramics, Milestone is a natural looking porcelain range that evokes the qualities typically found in Limestone.

Milestone consists of four light and airy neutral colours, including a warm tinged beige, a soft and rich cream, a chic Khaki shade and a modern grey option.

Described as a limestone effect range, the tiles feature a variety of authentic natural features such as speckles, veins and random tonal differences. Three finishes offer a huge amount of versatility,

from the slightly coarse Natural R10 to the super glossy Lappata finish, and finally the dramatically rough, 'rock surface' Grip version.

A full-bodied porcelain range, Milestone is made from the highest quality Italian material and can be applied to walls or floors in both commercial and residential projects.

The tiles in the range are available in three sizes: 300x600mm, 600x600mm and 600x1200mm and a variety of contemporary mosaic décor designs. ▶

Lightly dappled with crystalline spots



With a vast amount of variation from tile to tile, the Milestone range succeeds in creating a realistic natural aesthetic that truly mimics the rare and random quality of genuine natural stone.

An ideal product for crafting contemporary, schemes, Milestone is a refreshing and exciting range that includes a practical variety of sizes and many interesting finishes suitable for almost every type of project. ♦

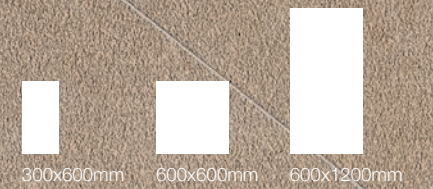
Featuring bold veins and intense natural speckles



## MILESTONE FINISHES, COLOURS AND SIZES:

Available in Natural R10, Lappata and Grip R12 finishes. PTV results available upon request.

For more information about the Milestone range please visit our website.



Discovery 3WZH101



Landmark 3WZH102



Progress 3WZH103



Chapter 3WZH104

Chapter 3WZH104

# WEST SIDE PROJECT



## WESTSIDE PROJECT

### *An overhauled, extended and refurbished Grade A office accommodation*

Westside was initially developed in 1990 as a landmark headquarter building providing 175,000 sq ft of office accommodation together with three full height reception areas, a security building and 730 car parking spaces.

When the design team at Sonnemann Toon first visited the site, it was clear that the uninspiring and underachieving building required a full refurbishment. Fortunately the base structure had been constructed to a high level and the shell and facade were robustly detailed.

A rigorous feasibility study investigated options to maximise the net internal area of the floors and enhance the layout of the building. This was achieved through removing three staircases; infilling terraces, balconies and external under cover ground floor areas. This increased the net internal area by approximately 8,012 sq ft to 99,274 sq ft without the need to increase the building footprint.

The proposed works included a full CAT A refurbishment of the office floors, common parts, reception and toilets. The mechanical, electrical and public health infrastructure was replaced and the ▶



CONCRETE  
EFFECT FLOOR  
TILES WERE  
CHOSEN FROM  
THE FORMAT  
RANGE

six passenger lifts were completely overhauled and modernised.

Solus Ceramics were delighted to work with Sonnemann Toon to supply tiles to the reception atrium and the WCs. Dramatic large format 1200x1200mm tiles from the concrete inspired Horizon range create a bold welcome at Westside with the rustically worn design of the tiles providing a warm aesthetic in the wide, open space.

In the WCs and shower facilities, light and bright stone effect porcelain tiles from the Gorges 2 range were applied in both wall and floor areas. The limestone effect tiles create a chic and modern ambience that is also easy to maintain and clean.

Tim Bennett, Associate, Sonnemann Toon Architects LLP, said: "The design team worked closely to overcome site issues and all parties worked hard to deliver a project to be proud of. The works have extended the life of a building that was once tired and lifeless. Now the building is bright, clean, modern and bustling with activity fit for the next 20 years." ♦



### Our view



Jo Burley  
Solus Ceramics Area Sales Manager  
joburley@solusceramics.com



Solus Ceramics were delighted to work alongside Sonnemann Toon Architects on this innovative and extensive renovation project in Apsley, Hemel Hempstead.

No stranger to large scale commercial projects, we facilitated the supply of more than 1800m<sup>2</sup> of tiles to the site.

The large format concrete effect tiles in the reception are a personal highlight, with the monolithic porcelain helping to build the sense of space and scale from the ground up.



For more information about this project please visit our website



# CHILTERN STONE

REVISITING A CLASSIC  
NATURAL EFFECT RANGE

LIMESTONE EFFECT RANGE



Chalfont 3PSP365



Lacey 3PSP361, Admail 3PSP367

## A practical and reliable range of stone effect porcelain tiles

Every now and again it is important to reconnect with a classic, core Solus Ceramics range, and in this issue we are delighted to direct the spotlight to Chiltern Stone.

A practical and supremely useful product suitable for all manner of commercial and residential projects, Chiltern Stone is a renowned porcelain range that has remained on-trend since its inception. Inspired by the most sought after and precious

natural stone, Chiltern Stone authentically reproduces the surfaces, veining and colours typically found in limestone.

Available in eight shades, Chiltern Stone provides a varied and diverse array of tones for designers to explore. As well as a selection of grey neutral colours, the range also embraces a wealth of warmer options including a rusty brown and a gentle sandstone orange. ▶

Each tile features a distinctive variety of unique tones

Each tile is enigmatically decorated with natural inspired features such as pearlescent veins, dynamic dark speckles and sparkling flecks.

Chiltern Stone can be specified in two finishes; a functional Matt R10 characterised by a slight coarse surface, and a smooth and slick Lappato finish, which features a semi polished, snakeskin effect sheen.

In addition, the range offers a huge variety of sizes and thicknesses, which means users are sure to find a size and format to suit their design ideas. ♦

Reproducing the natural beauty of limestone



Lacey 3PSP361



Admail 3PSP367

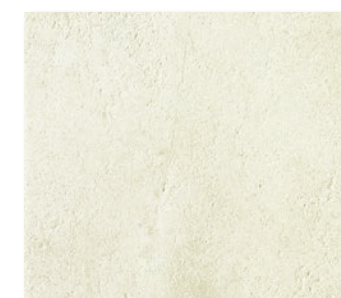


Potten 3PSP366, Lacey 3PSP361

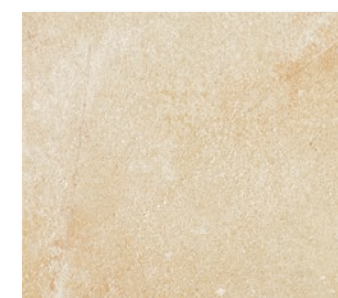
### CHILTERN STONE FINISHES, COLOURS, AND SIZES:

For more information about the Chiltern Stone range please visit our website.

Available in **Matt R10** and **Lappato** finishes. PTV results available upon request.



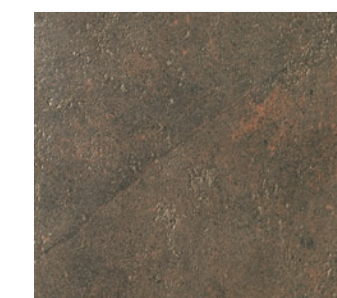
Lacey 3PSP361



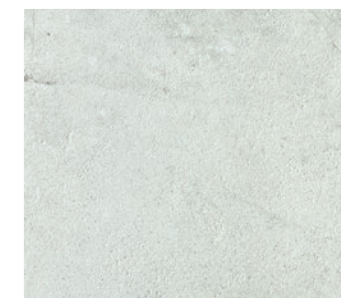
Wyfold 3PSP363



Chinnor 3PSP364



Nelson 3PSP368



Wendover 3PSP362



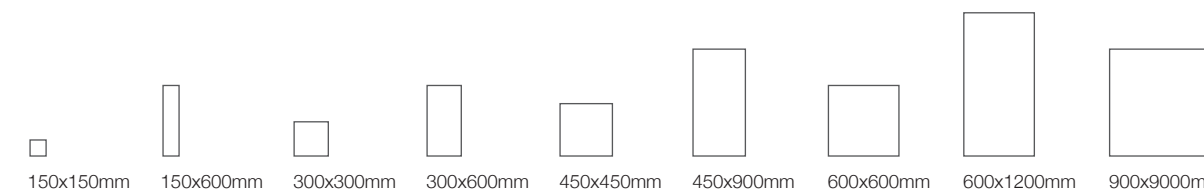
Admail 3PSP367



Chalfont 3PSP365



Potten 3PSP366



An infinitely tactile and textured range

Chalfont 3PSP365



# OPEN PEDESTAL SYSTEMS

The pedestal raised deck supports are designed for use on external terraces, walkways, balconies and ballasted flat roof constructions. They can also be used for decorative purposes to create raised patio and wooden decked areas in gardens.

Depending on the system used, they can accommodate from a few centimetres up to 55cm in height, giving a wide range of adjustment, with some types giving fine adjustment on the levelling head.



TECHNICAL GUIDE



### SELF-LEVELLING HEAD:

Some pedestals have self-levelling heads which can compensate for gradients up to 5°. They are usually made of polypropylene and rubber to provide an anti-noise and anti-slip bedding surface

### SELF-SPACING:

Most pedestals have locating blades on the head to assist with the positioning of slabs/tiles etc, and for maintaining open joints when required. If required, (for different tile formats), the locating blades can be removed.

### ROBUST:

Resistant to temperatures from -40° to +120°C and are UV stable and resistant to acids

### INSTALLATION:

Pedestal systems are fairly quick and easy to install, and provide fast, efficient drainage through the open joints of the slabs/tiles to the concealed drainage below.

The system is ideal for any waterproofed substructure and especially for inverted roof constructions where ballasted insulation is laid onto the waterproofing layer of the flat roof. Traditional bedding and grouting materials are not required, and once installed; the slabs/tiles can be easily lifted for simple inspection of the drainage outlets and for substructure maintenance. A stable sub-base and, in the case of exposed external use, an adequate means of surface water drainage are virtually the only requirements for the system. Irregular, stepped, uneven or sloping sub-bases can usually be easily surmounted by the system resulting in a new level raised floor.





# THE SYSTEM

The pedestal system comprises 14 basic modules, each with supporting head and base component, allowing a wide range of void heights.

Modules are used either individually or in combination to give floor voids ranging from 37.5mm to 550mm.



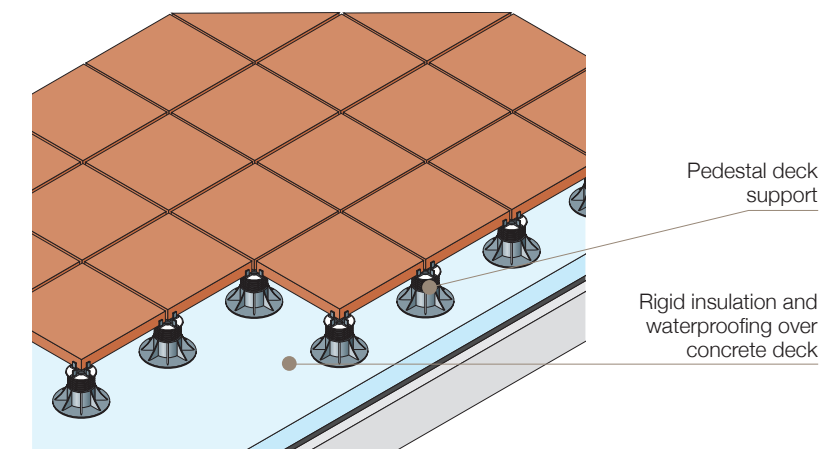
## INSTALLATION SEQUENCE:

1. Check condition of sub-base, waterproofing and drainage points. Rectify any defects and clear drainage outlets as a preliminary measure.
2. Set out pattern of pedestal supports, ensuring the correct number for the tile size, selected to suit new deck height and paving modules.
3. Use supporting heads with linear blade configurations at edges of deck and at any intermediate surface interruptions.
4. Adjust pedestal screw-jacks to the approximate height required, checking for level and alignment.
5. Finalise the layout of the pedestals. For convenience, use a lightweight template for checking positions and to avoid undue lifting of heavy slabs/tiles.
6. Proceed to lay the slabs/tiles, ensuring that each slab corner is firmly seated on the pedestal head and butted up to the locating blades.
7. Final adjustment to level can be made by using the adjustment key.

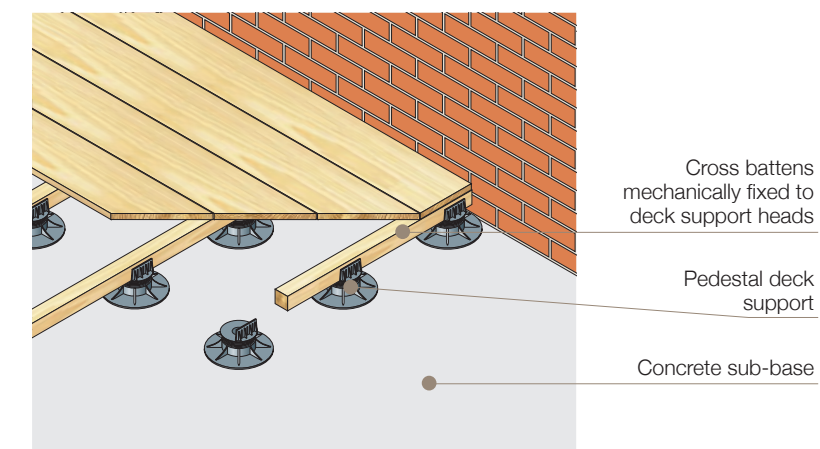


# TYPES OF APPLICATION

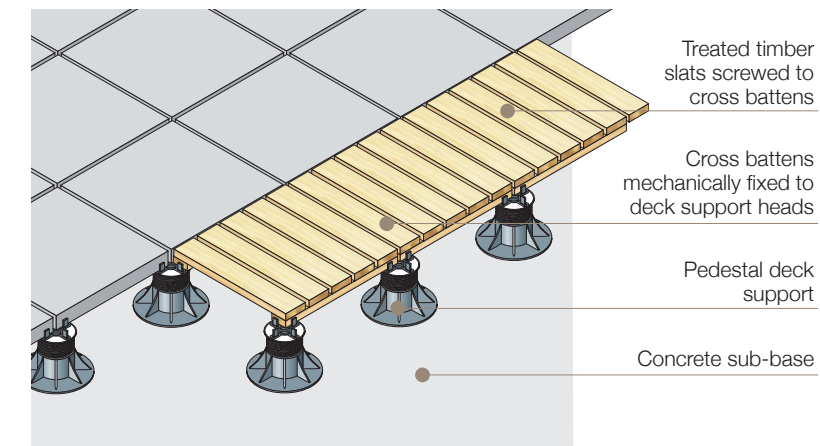
## TILES / SLABS WITH OPEN DRAIN JOINTS



## TREATED TIMBER SLATS SCREWED TO CROSS BATTENS



## COMBINATION OF DIFFERENT SURFACE FINISHES





## Experience CPD seminars with Solus Ceramics

Solus Ceramics are proud to offer a number of CPD seminars to professionals in the design industry. As part of their continuing commitment to customer support, CPD seminars are totally complimentary to any interested parties including past clients and new contacts.

These CPDs, which are all themed around the subject of tiles and tile installation, will help you to develop your knowledge and appreciation of diverse tile related subjects such as safety information, innovative tile products, British Standards and sustainable tile production.

CPDs can be arranged at a time to suit you and can be held at a your own workplace or a meeting point

of your choice, as long as sufficient facilities are available. Alternatively, Solus Ceramics welcomes you to take part in CPDs at their Birmingham HQ or their Baker Street showroom. In addition to taking part in one of our many CPD seminars, which is presented by a member of our experienced and knowledgeable team, Solus Ceramics will also provide a free lunch.

Solus Ceramics are happy to accommodate both small, intimate gatherings and large scale group sessions.

[www.solusceramics.com](http://www.solusceramics.com)  
0121 753 0777  
[info@solusceramics.com](mailto:info@solusceramics.com)

## AN OVERVIEW OF TILE SPECIFICATION

### *The main aims of this seminar are to:*

- Provide the specifier with ongoing technical and product information as part of continuous professional development
- Discuss subjects which will help the specifier utilise floor and wall tiles avoiding any potential issues
- Provide knowledge and technical support in all areas of supply right through to installation
- To ensure correct detailing for the laying and application of ceramic and porcelain tiles

Duration: 45 to 60 minutes

The seminar includes information on the equalities act and British Standards, as well as Slip Resistance requirements, wet area tiling, movement joints, NCS colour scheme, calibration and corundum inserts.

## DON'T SLIP UP!

### *This bespoke seminar will provide you with:*

- The latest guidance on anti slip floor tiles and the testing procedures
- A video demonstration of the ramp test (DIN 51130 and DIN 51097) and live demonstrations of the Wessex pendulum machine and surface roughness meter
- Up-to-date HSE anti slip guidelines for commercial floor tiling
- Specific project risk assessment, function before form
- Site conditions, user behaviour, possible contaminants, maintenance

Duration: 45 to 60 minutes



