



silhouette

Stunning three-dimensional style

A glamorous range of seductive geometric wall tiles, ideal for creating textured, tactile surface designs.

innovate
Retro 80's design

Wood Farm
Chic country living

polymeric
Diverse terrazzo

Shoryu Oxford
A fusion of cultures



stimulating your design appetite

by **Paul Shepherd**, editor
paulshepherd@solusceramics.com

With the Clerkenwell Showroom now open and the new Solus branding firmly established, you would think it would be time to relax! But demand for new ideas and inspiration never ceases, so our team have been hard at work sourcing some inspirational new materials to whet your design appetite.

In issue 14, we are exploring some totally unique concrete wall finishes that will completely change the way you think about surface coverings, and we are also promoting a collection of eye-catching three-dimensional tiles.

Projects in this issue come from our friends at Oktra, Studio RHE, CPMG, Blenheim Design, Fusion Design and Architecture, and LS Architectural Designs.

contents



new products

06 uptown
Warm and contemporary limestone effect tiles

18 labyrinth
An eye-catching concrete covering for feature walls

28 innovate
Inspired by the retro style of the 80's

40 silhouette
A stunning range of elegant geometric wall tiles

52 nexus
High quality cast concrete for intrepid architectural projects

62 polymeric
Fusing modern porcelain with the qualities of traditional terrazzo



case studies

12 One Alie Street
Stylish office accommodation in the heart of Aldgate

22 Wood Farm
The epitome of contemporary country living

34 The Allegory
A new bar and restaurant by award-winning brand, Drake & Morgan

46 De Montfort University
Exploring the home of art, design and architecture in Leicester

56 Shoryu Oxford
A fusion of historic British architecture and Japanese style

68 Biala Synagogue
A new community centre located in Stamford Hill



intelligence

74 Bespoke slabs on demand
Create your own custom large format slabs with a new design service at Solus

78 CPD Seminars
Find out about the range of different CPD seminars available with Solus

quarter
inspiring your imagination

Peter Bentley
peterbentley@solusceramics.com
Chairman

Marcus Bentley
marcusbentley@solusceramics.com
Managing Director

Ryan Bennett
ryanbennett@solusceramics.com
Finance Director

Stephen Baker
stephenbaker@solusceramics.com
Commercial Director

David Overton
davidoverton@solusceramics.com
Sales Director

Paul Shepherd
paulshepherd@solusceramics.com
Editor

Ricardo Jardim
ricardojardim@solusceramics.com
Designer

LONDON REGIONAL SALES

Jo Burley
joburley@solusceramics.com
+44 (0) 7917 064 853
West Central

Pete Toule
petetoule@solusceramics.com
+44 (0) 7917 064 853
East Central and East

John Rose
johnrose@solusceramics.com
+44 (0) 7912 479 613
Central, North West and North

Michael Irvine
michaelirvine@solusceramics.com
+44 (0) 7717 788 578
South West Central and South East Central

Mark Ayliffe
markayliffe@solusceramics.com
+44 (0) 7896 266 561
South West and South East

ENGLAND, WALES AND SCOTLAND REGIONAL SALES

Ross Murray
rossmurray@solusceramics.com
+44 (0) 7799 867 296
Scotland and Northern England

Claire Hulme
clairehulme@solusceramics.com
+44 (0) 7860 850 498
North West England and North Wales

Darrell Cook
darrellcook@solusceramics.com
+44 (0) 7795 368 915
North East and East England

Mark Wright
markwright@solusceramics.com
+44 (0) 7772 769 790
Midlands

Zoe Syroka
zoesyroka@solusceramics.com
+44 (0) 7530 622 310
East Midlands and NW Home Counties

Denise Shingler (sales support)
deniseshingler@solusceramics.com
+44 (0) 121 753 6840
Wales and South West England

SOLUS

Head Office & Solus Tile Studio
Unit 1, Cole River Park,
285 Warwick Road,
Birmingham, B11 2QX
+44 (0) 121 753 0777
sales@solusceramics.com

Clerkenwell Showroom
80 Clerkenwell Rd, London EC1M 5RJ
+44 (0) 203 282 8466
sales@solusceramics.com

Baker Street Showroom
9 Baker Street, London, W1U 3AH
+44 (0) 20 7935 7355
sales@bakerstreettiles.com



“

Solus Clerkenwell has already made a big splash in the design community and we are so excited to continue to build our brand and presence in the area.”

Stephen Baker, Commercial Director



**CLERKENWELL
DESIGN WEEK**

Solus celebrating success at their first Clerkenwell Design Week

Clerkenwell Design Week has firmly established itself as the UK's leading independent design festival, annually attracting thousands of visitors from the international design community to this small area of London every year.

With Solus Clerkenwell opening earlier in the year, CDW was the perfect opportunity to introduce the showroom to the design community and showcase a host of exciting new products and inspirational services.

Solus joined the festival for the first time as a 'resident design showroom', providing visitors with a stimulating programme of topic-led events including talks, workshops and product launches.

Visit the showroom weekdays from 9am-6pm

Clerkenwell Showroom
80 Clerkenwell Rd, London EC1M 5RJ
+44 (0) 203 282 8466



Solus welcomed more than 3,000 guests over the three-day festival

Visitors to Solus Clerkenwell enjoyed daily exhibitions as well as special 'meet the designer' events with commercial partners such as Missana, Kast, Ornamenta, Casalgrande and Listone Giordano.

Solus hosted nightly VIP networking and entertainment events, where friends, clients, partners and visitors to CDW enjoyed signature cocktails, delicious street food and memorable music.

With more than 3,000 guests visiting the showroom over the course of the three-day festival, Clerkenwell Design Week was a tremendous success for Solus, and the team are looking forward to the exhibition's return next year. ♦



Thanks for the photography!

In our last issue we featured a fantastic terrazzo infused project by Block1: Design. Solus would like to thank Enzo Cerri for sharing his fantastic photography for the article.
www.enzocerriphotography.com

uptown

Limestone effect
Floors and walls

3PAB104



uptown

A warm and contemporary limestone effect range

An all-new graphic incarnation of natural stone, Uptown combines the quintessential features of four popular architectural materials, and offers a perfected aesthetic that would not be possible in the natural world.

At the core of this range is the dynamic collection of four colours: from a pure white, to a warm taupe, an elegant grey and finally a subtle brown. Incredibly lifelike, each tile showcases a huge array of balanced tones and natural effects – creating the illusion of real textures.

Each colour of the range is made up of eight alternating surface designs with a moderate level of pattern variation. This essentially means that when applied, the tiles in the Uptown range will evoke a natural, hard-to-repeat aesthetic. For an even more unusual design, the four colours in the

Uptown range can be selected in three décor finishes, which alter the effect of the tile with graphic textile motifs. These unusual designs reproduce the subtle, tactile effects of woven material but are created with production techniques rather than tactile textures.

Available in three flexible finishes, users can choose from the standard Natural R10 (A+B), a lightly polished Lappato, and a special Grip R11 (A+B+C) finish. For those wanting to explore exterior solutions, tiles are also available in a 20mm thickness, which would be ideal for outdoor patios, balconies or spaces where dry laying is suitable.

With three possible formats, Uptown provides enough versatility to suit a huge range of residential and commercial projects. ♦

Replicating the subtle textures and tones of limestone





An all-round range for interior and exterior projects



uptown technical details:

Finishes: Natural R10 (A+B), Lappato and Grip R11 (A+B+C)
 Appearance: Limestone Effect
 Material: Porcelain
 Usage: Floors and walls
 Shade Variation: V3 - Moderate

Colours:

	
Axbridge 3PAB101	Horsham 3PAB102
	
Kesgrave 3PAB103	Ledbury 3PAB104

Décors are available in all colours, Natural R10 (A+B) finish and both 300x600 and 600x600mm sizes:

		
Décor 1	Décor 2	Décor 3

Sizes (mm):

		
600x1200	600x600	300x600

PTV results available upon request

Search for **uptown** at solusceramics.com for more information about this range

ONE

ALIE
STREET
E1

case study

2RPU342

3LBC523



Images courtesy of Oliver Pohlmann

One Alie Street

Case study

Stylish office accommodation in Aldgate

Located close to the junction on Aldgate High Street, One Alie Street is a modern office building in one of London's most vibrant and artistic neighbourhoods.

Design and build specialists, Oktra, led a Cat A refurbishment of the external entrance, reception, WCs, basement showers and first floor, with the objective of creating an iconic space to attract future occupants from the technology sector.

Approached via a newly designed ramped walkway directly from Alie Street, visitors are met with a stunning architectural atrium, which features a double height area and an eye-catching

illuminated 'One', maximising the identity and prominence of the building.

Along with contemporary furniture, striking copper cladding and a 'hotel style' reception desk, the atrium area features various evocative tile finishes, complementing the bold, modern look.

Two waiting areas, situated at either side of the reception area, were fitted with 100x600mm plank-shaped tiles, fixed in a staggered bond, with an unusual yet distinctive short overlap. The designers chose a single shade, but to replicate the >



Gloss wall tiles provide a perfect backdrop for the iconic light installation



mixed colour aesthetic of the existing tiles in the centre of the reception, two alternating finishes were used, creating a subtle tonal and texture variation.

In addition, simple 150x150mm gloss black tiles from the Glisten range provide the perfect backdrop for the iconic LED 'One', creating a subtle, reflective canvas that only enhances the vibrant, colour-changing installation.

In the updated bathrooms, tiles from the Glisten range were once again the perfect solution for creating a super stylish, timeless design, and were perfectly complemented by the matt finish floor tiles from the Halogen range. ♦

Simple 200x200mm wall and floor tiles create a sophisticated and considered modern aesthetic

An iconic office refurbishment

“

In addition to the various tile finishes used throughout the interior of the building, Solus also worked with Oktra to supply large format tiles to the exterior façade of the newly remodelled entrance and to a contemporary raised planter.

The sophisticated slabs perfectly suit the modern aesthetic of the building echoing the style of the copper cladding and bronze floor tiles used in the reception.”

Pete Toule, Solus Area Sales Manager
petetoule@solusceramics.com



Tiles used in this project:

Silt 2RPV342, Glisten range
Bryan 3LBG523, Stonework range
Witt 2RPV321, Glisten range
Spangle 2RPV436, Halogen range
Sunloch 5LHY037, Wildfire range

For more information please visit solusceramics.com



5HAA104

labyrinth

Irregular
Walls only



labyrinth

A unique cast concrete surface style

A striking hexagon range, Labyrinth is an eye-catching concrete surface covering, perfect for creating elaborate designs on interior walls, bar fronts and sumptuous feature walls.

Inspired by the popular hexagon format, Labyrinth is a new three-dimension wall range, consisting of hexagon-shaped tiles sized 150x170x35mm.

The unusual wall finish features a smooth hexagon relief that is slightly angled, so that when applied to a flat surface, the resultant pattern is highly textured, tactile and pillared.

By positioning the tiles so that the raised angle always faces the same way, designers can create uniform relief patterns. However, by alternating the layout, the subsequent

arrangement can be engineered to appear like a sinuous wave, or a natural topographic map.

Unique and individual, the tiles really come to life when exposed to differing lighting conditions. In a naturally sun-lit area, users will notice how shadows cast from the tiles change throughout the day, whilst in situations with controlled artificial light, users can play with fixed sources to create the most aesthetically pleasing effects.

Available in five shades, the range includes a selection of gentle pastel colours, from a chalky blue to a gentle sandy beige and various muted grey tones. Explore and experiment with the Labyrinth range at Solus Clerkenwell to discover different aspects of this exciting range. ♦

labyrinth technical details:

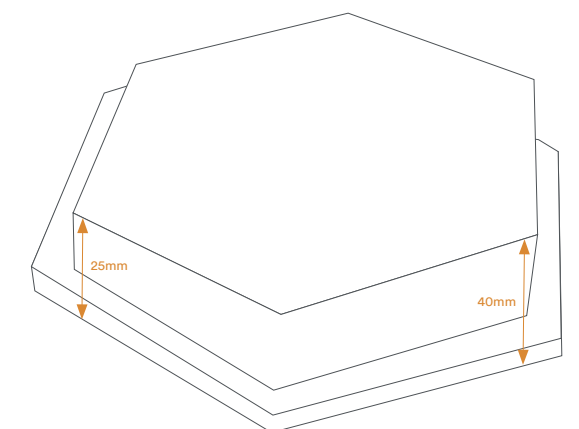
Finish: Paris
 Appearance: Irregular
 Material: Concrete
 Usage: Walls only
 Shade Variation: V1 - Uniform

Search for **labyrinth** at solusceramics.com for more information about this range

Colours:



Size (mm):



Wood Farm

case study



SRBE403

3MOL266



Wood Farm

Case study

The epitome of contemporary country living

Situated in an idyllic Area of Outstanding Natural Beauty in the unspoilt marshland of Suffolk, Wood Farm is an unusual and unexpected residence borne from a collection of existing farm buildings and new Modernist enclosures.

Designed by London-based Studio RHE as a family home for founder and director Richard Hywel Evans, Wood Farm sits in the demolished footprint of an old farmstead built in 1949, framed by a repurposed corrugated aircraft hangar.

The brief was to create a rigorously contemporary house that was also sustainable and sympathetic to its surroundings. The

property faces south to make the most of the uninterrupted views, whilst shielding the open courtyards on either side of the building from the strong prevailing winds that whip across the landscape.

Fusing the idea of old and new, reclaimed bricks at the front give the appearance of a traditional country house, but step around to the back, and the building opens up, referencing the relaxed style of a contemporary resort, complete with a breathtaking outdoor pool.

Partially sheltered by a marble clad Modernist arch, the 18m >



Book matched marble effect slabs from the Marbalite range frame a dramatic poolside waterfall



“

Following an introduction to the ranges by Solus at their London showrooms, porcelain tiles were eventually chosen to ensure that the structure was seen as extremely solid. With easy to conceal edges, the large format marble effect slabs were used to cover huge areas quickly and create perfect, unflawed surfaces.”

Richard Hywel Evans, Studio RHE
www.studiorhe.com

Large format concrete effect floor tiles perfectly complement the size and scope of the interior space

pool features a dramatic cascading waterfall that flows in front of a beautiful pair of book matched marble slabs, finally falling into the sparkling, deep-blue pool below.

Adapted effortlessly to indoor/outdoor living, the courtyard flows seamlessly into the house through frameless glass walls and corner openings, with uninterrupted wood effect porcelain tiles providing a consistent statement.

Inside, half of the house is dedicated to a large family space, centred around an open kitchen and dining area looking out to the pool, whilst the rest serves as a guest wing comprising three bedroom suites with their own kitchen and living area.

Colossal, large format concrete-look tiles from the Ascension range delineate the kitchen area, whilst Carrera effect slabs from the Marbalite range create a clean decorative finish referencing Modernist masterpieces such as the Mies van der Rohe Barcelona Pavilion. ♦



Tiles used in this project:

- Leawood 3MDL266, Marbalite range
- Stills 3RBE403, Woodstock range
- Darbari 6MQH133, Icedgems range
- Es Castell 6MQH102, Icedgems range
- Orbital 3HRF505, Ascension range

For more information please visit solusceramics.com





Innovate

2EGT114

Patterned
Floors and walls



Innovate

Reimagining iconic 80's design

Inspired by the iconic style conceived by the Memphis Group in the early 80's, Innovate is a new range that evokes the creative and cultural mood of a divisive design era.

With kitschy colours and clashing graphic patterns, Innovate captures the exaggerated, playful spirit of a decade epitomised by loud and bright fashion, colourful design and bold architecture.

Exhibiting a variation on the brash neon signs and loud MTV style graphics typical of the 80's, Innovate tastefully opts for a muted palette of colours in two different colour families.

Centred on a cool grey theme, the first collection offers tones ranging from indigo to charcoal, and proposes eight highly

distinctive, patterned options. Featuring evocative arrows, uniform dots and striking geometric shades, this half of the range is decidedly bold, perfect for creating memorable installations.

In contrast, the warm palette of tiles features inviting colours ranging from caramel to smoke and comforting beige. Soft and friendly patterns are a big part of this stylish range and include rustic sprinkles, uneven strips and geometric shapes.

All tiles in the range come in a standard 200x200mm size and feature a Natural R10 finish. Users can select individual patterns to create traditional uniform designs, or opt for mixes, allowing the composition of more abstract patchwork effects. ♦



Inspired by the graphic 80's style of the iconic Memphis Group



Designers can create uniform patterns or go wild with a patchwork style

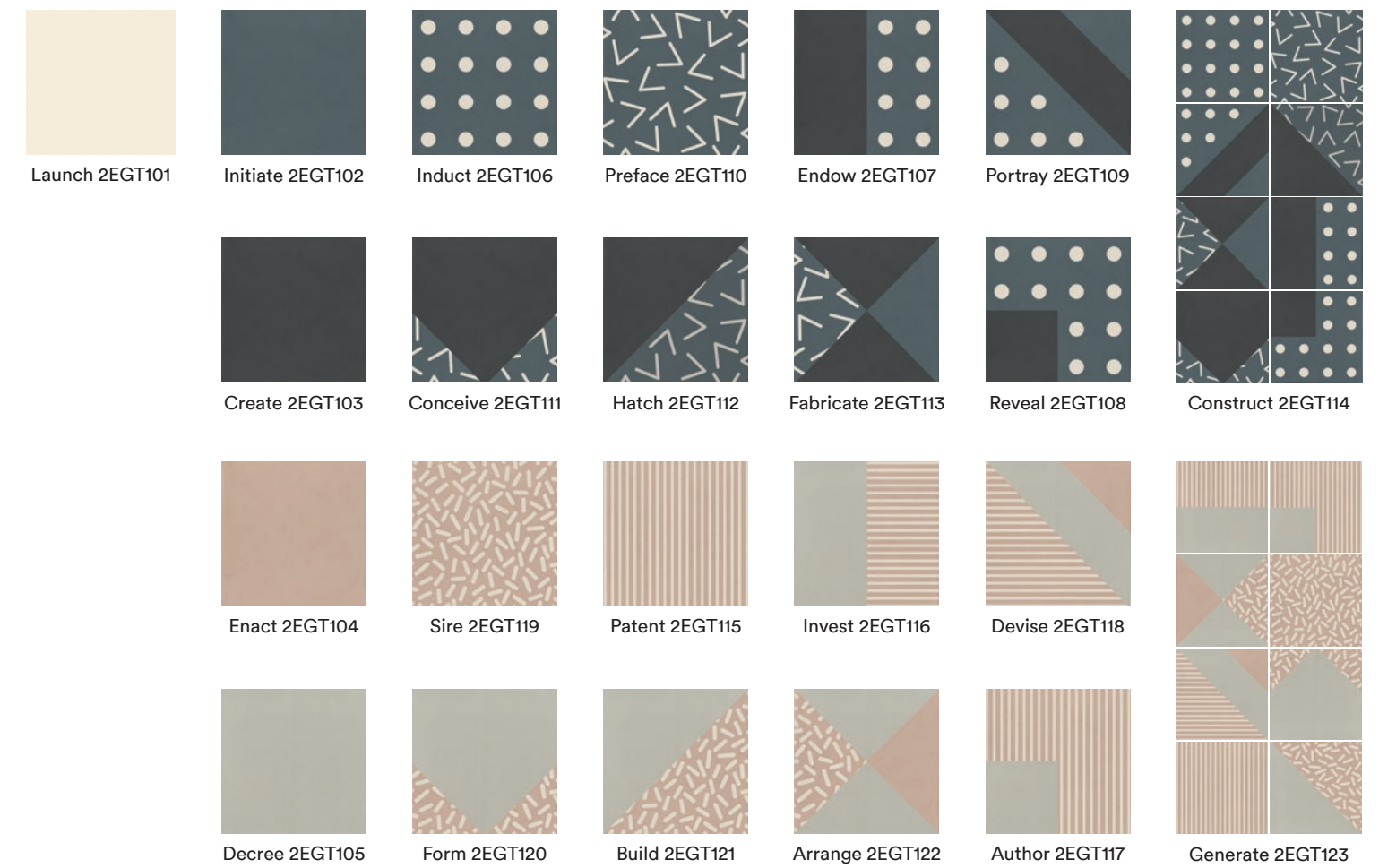


innovate technical details:

Search for **innovate** at solusceramics.com for more information about this range

Finish: Natural R10
 Appearance: Patterned
 Material: Porcelain
 Usage: Floors and walls
 Shade Variation: V2 - Light

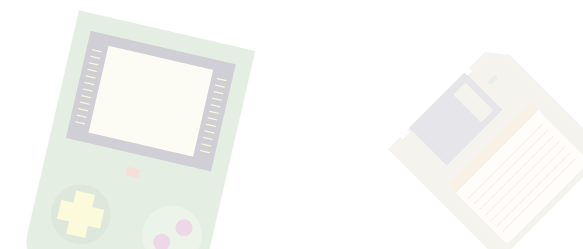
Colours:



Size (mm):



200x200
 PTV results available upon request





THE
ALLEGORY

2HEX111

2HEX110

2MSR010





The Allegory

Case study

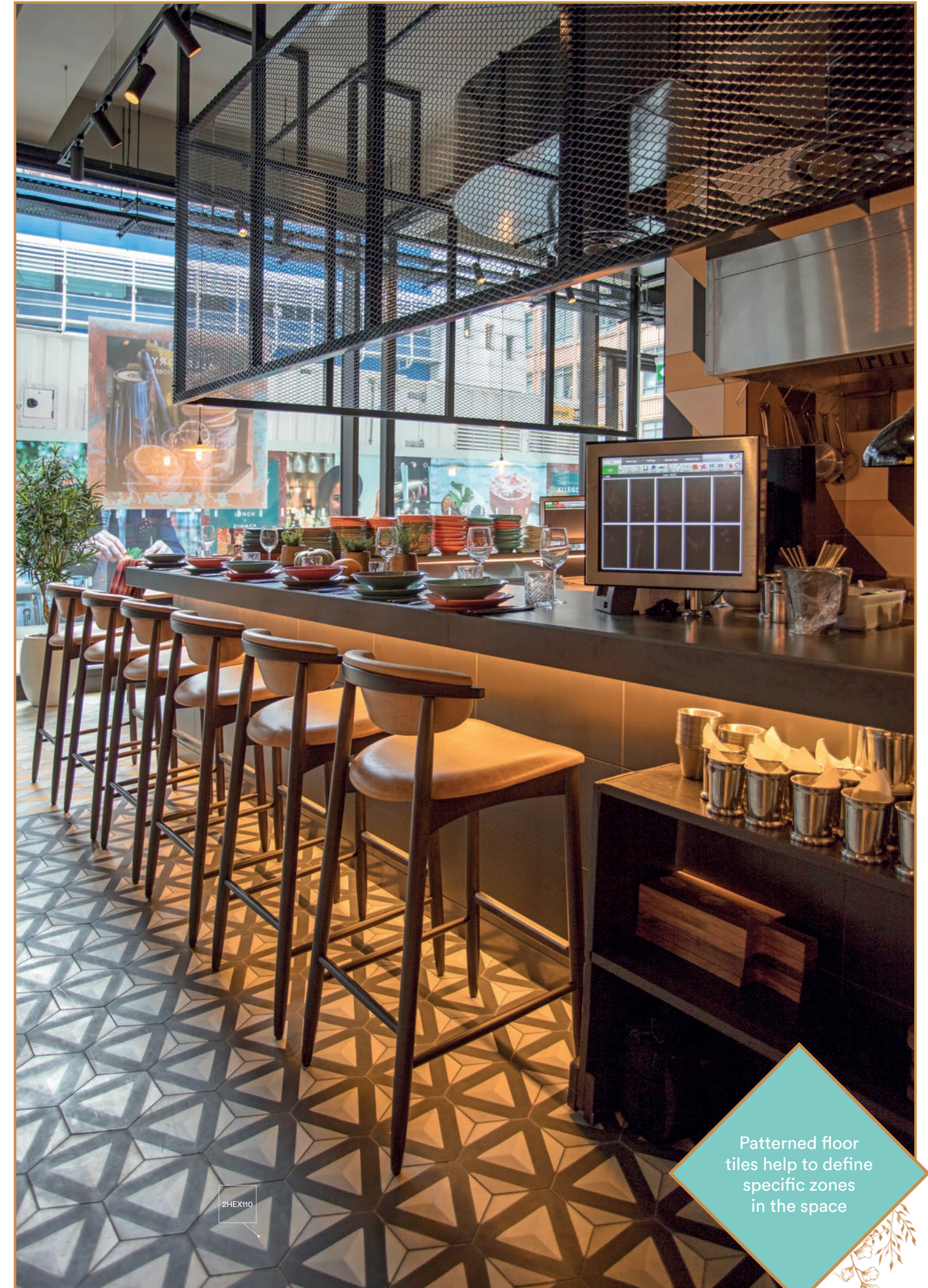
An enchanting oasis in an emerging London hotspot

Located in the heart of Shoreditch's up-and-coming Principle Place, The Allegory by Drake & Morgan is a new bar and restaurant perfectly suited for long, lingering brunches, coffee catch-ups, creative cocktails and delectable dining experiences.

Brought to life by the sector leading creative minds at Fusion Design and Architecture, The Allegory is an enchanting visual experience from outside to inside, featuring an eclectic melting pot of industrial finishes, lush botanicals and creative graphic patterns.

Geometric designs feature strongly throughout the bar, and this is accentuated by the use of distinctive floor tiles at the entrance, around the bar, in front of the open kitchen and in dining spaces. The design team selected an array of imaginative encaustic tiles in a selection of expressive hexagon and diamond formats.

Four distinctive designs were chosen for the project, each featuring a bold, eye catching core colour, yet all linked by a recurring palette of matching grey shades. Complementing these strong, iconic tiles, the designers also utilised subtle >



Patterned floor tiles help to define specific zones in the space

Brought to life with a range of eclectic finishes

“

Solus supplied a number of highly decorative encaustic designs to The Allegory, creating a truly distinctive, bohemian aesthetic that effortlessly conveys the ‘everyday escape’ concept sought by the client.

A fantastic option for designers, these hand-made tiles are available in various geometric shapes and a huge array of designs.”

Michael Irvine, Solus Area Sales Manager
michaelirvine@solusceramics.com



Tiles used in this project:

- Bobby 2HEX110, Unity range
- Otoki 2HEX111, Unity range
- Lather 2MSR010, Elixer range
- Dimona 2MSR011, Elixer range
- Knoxville 5AZB520, Sparkle range
- Ravan 5ACH107, Geometry range
- Taishi 5ACH101, Geometry range
- Cerna 5ACH104, Geometry range

For more information please visit solusceramics.com or call Solus sales team on +44 (0) 121 753 0077

crackle-glazed wall tiles that were brought to life with iconic hand-painted murals.

The masterful tile choice also extends to the bathrooms, where guests experience a dark and seductive aesthetic, enriched with concrete finishes and mesmerising kaleidoscopic botanical prints. Solus supplied wall tiles from the amazingly decorative Geometry range in a variety of three monochrome shades. The rhombus shaped tiles were used to create a fascinating zigzag pattern around the vanity units and into the cubicles.

A thoroughly imaginative and experiential restaurant design, it is no surprise that The Allegory has been shortlisted for a Restaurant & Bar Design award 2018! We wish the designers and Drake & Morgan the best of luck! ♦



A design that celebrates the playful, colourful and imaginative versatility of tiles



SALP107

silhouette

Irregular
Walls only



silhouette

Dynamic three-dimensional wall tiles

Attracting the eye and stirring a sense of adventure, three-dimensional tiles are the must-have trend of 2018, and it is a style that Solus believe will only grow as more designers are introduced to innovative new ranges like Silhouette.

Taking a hexagon, triangle and square format, the range is built upon a core array of 13 colours, including many neutral tones, an elegant metallic gold and a bright electric blue.

The hexagon tiles are available in a choice of three sculpted geometric forms, Oberland, Star and Umbrella, each showcasing a distinctive, angular relief. The triangle format comes in a single three-dimensional 'tipped' option, whilst the square tiles are available in a swooping Curve or a sweeping Lance decoration.

The tiles in the range are available in a variety of different finishes. Solus would highly recommend discussing your ideas with the sales team and ordering samples to ensure that you select the right product for your project.

A highly distinctive range, designers can opt to use a single style of tile in a project to create a stunning uniform pattern, or choose to mix different colours and 3D forms to produce unique, one-of-a-kind surface installations.

For those wishing to explore simplified, plain versions of these tiles, Silhouette shares a special relationship with the Dynamic range (featured in Quarter 13), which can be used seamlessly with Silhouette, for even more elaborate and considered designs. ♦



A distinctive three-dimensional surface covering

A desirable array of geometric formats



A fresh and funky application of Silhouette at Drake & Morgan's 'The Listing', design by Fusion Design and Architecture.



silhouette technical details:

Search for **silhouette** at solusceramics.com for more information about this range

Finishes: Gloss, Matt, Satin and Metallic
 Appearance: Irregular
 Material: Ceramic
 Usage: Walls only
 Shade Variation: V1 - Uniform

Colours:

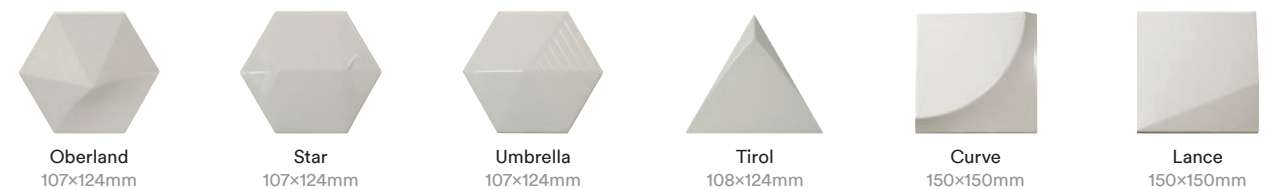


Sophia 5ALP107 Cindy 5ALP105 Lizzy 5ALP110 Ella 5ALP111 Samantha 5ALP112 Laurie 5ALP106



Chloe 5ALP109 Beatrice 5ALP121 Aubrey 5ALP113 Peyton 5ALP101 Abigail 5ALP108

Shapes and sizes:



A&D



**DE MONTFORT
UNIVERSITY
LEICESTER**

case study

↑ Large Materials Store 0.22
← Toilets ♿ ♿ ♿

Automatic door

Automatic door

ZAPX510

ZAPX508

ZAPX511



De Montfort University

Case study

Award winning university design in Leicester

Home to the schools of architecture, art, design and fashion, the completion of the Vijay Patel Building at De Montfort University is part of a critical phase in the university's long-term master plan to re-connect to the city centre by creating a series of linked spaces and buildings.

The extraordinary 27,000m² building was designed by CPMG Architects Limited, and has gone on to scoop multiple design awards such as: the LABC Award - Best Educational Building; the ProCon Award - Large Non-Residential Building; and the RIBA East Midlands Award 2018.

The faculty vision was to create a development that would impress stakeholders and competitors with its ingenuity and elegant design. The new facilities are to play a key role in the recruitment of staff and students by celebrating the area's industrial and craft heritage as well as its cutting-edge digital future.

At the heart of the building, in the design atrium, floor tiles from Solus' Monolith range take centre stage. A concrete inspired series, the Monolith tiles were featured throughout the stunning atrium, art gallery, circulation walkways and reception area. >

Concrete effect tiles were the ideal choice to complement the bold, industrial aesthetic



Large format 1200x1200mm tiles were used, helping to create a raw, open and limitless feel, reflecting the artistic materials that the students would be using in their projects. The design team also experimented with an innovative floor design, using various complementary shades and bespoke water jet cut tiles to create an artistic and inspiring reception area.

Anna Amin, Senior Interior Designer and Group Leader at CPMG Architects Limited, said of the project: "We selected Solus' Monolith tiles as they encompassed the feel of raw materials and brought an industrial feel to the building, which was exactly what we were looking for. We chose these tiles not only for the aesthetic qualities, but also because they met the client's needs with the range's non-slip and durable qualities."

The bathrooms feature a simple, yet modern combination of wall and floor tiles

A project that provides the ideal setting for large format material

“

The Vijay Patel building has been a fantastic project to revisit, especially seeing how it has already made such an architectural statement in the region, winning several awards and lauded by visitors and industry experts alike.

The Monolith range was the ideal solution for this project, providing modern characteristics and large format sizes that were not dwarfed within the size of the building.”

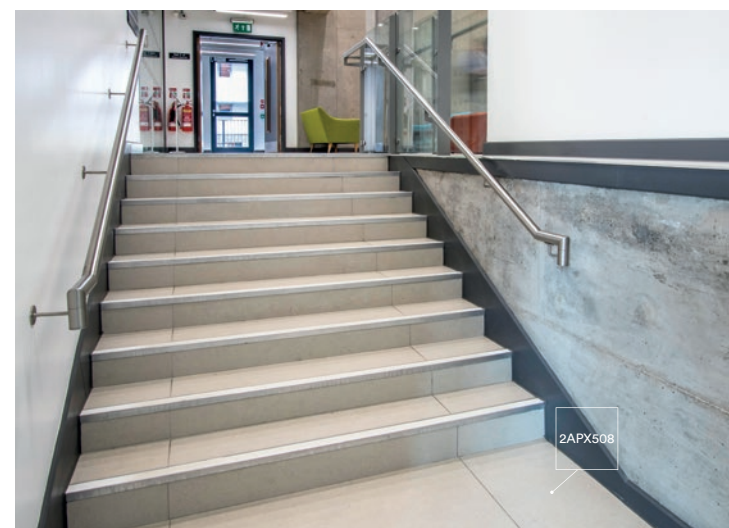
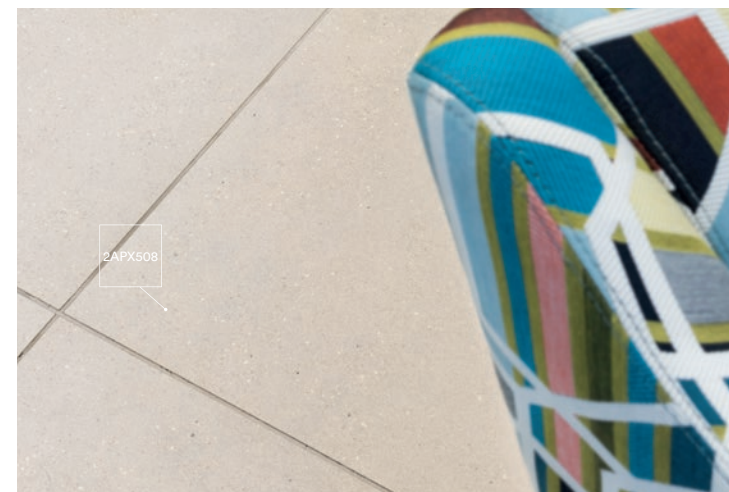
David Overton, Solus Sales Director
davidoverton@solusceramics.com



Tiles used in this project:

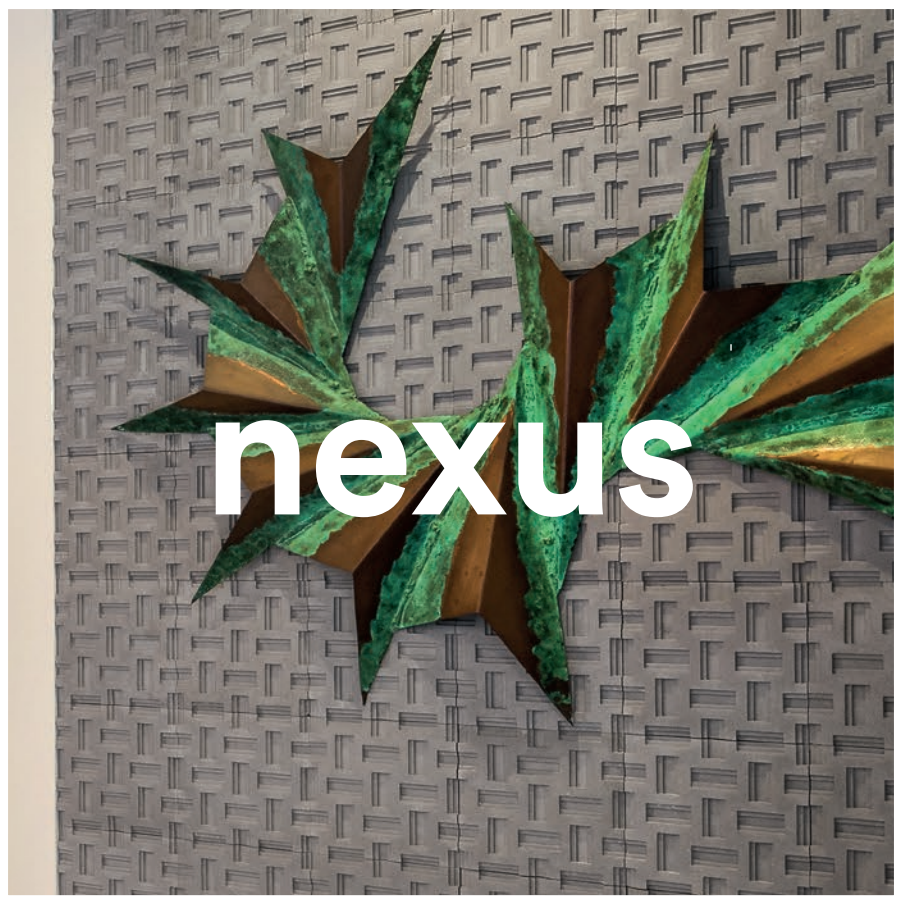
- Morecheba 2APX508, Monolith range
- Rolley 2APX511, Monolith range
- Divination 2APX510, Monolith range
- Almantia 5HTR526, Bright range
- Abyss 3SCT0031, Travertine 1 range

For more information please visit solusceramics.com





5PHC101



nexus

Irregular
Walls only



nexus

Introducing the next dimension of wall tiles

Created using the highest quality architectural concrete, Nexus is an original and dynamic surface covering for walls, and has been designed to produce maximum impact in interior locations and on feature facades.

A complex and intricate range, Nexus is available in four diverse geometric patterns, which are beautifully sculpted in 3D, bringing an ornate filigree effect to whatever area they are applied.

Depth, design and shape intertwine to create dynamic patterns and interesting relief outlines that are particularly evocative when illuminated by natural or artificial lighting, creating characteristic shadows and highlights.

Inspired by modern motifs, the range is made up of both rigid geometric designs and more organic curved features. These tiles can be used independently to create regular uniform patterns, or mixed and matched to produce iconic patchwork effects.

A product that invites attention and can only be truly appreciated in reality, Nexus is on display at Solus Clerkenwell, where visitors are encouraged to get up close and personal with this tactile range.

Available in five pastel colours, Nexus tiles are made to order, and whilst the white tiles are supplied on a typical two-week lead-time, we would advise clients looking to use a colour to anticipate a slightly longer eight-week time frame. ♦

nexus technical details:

Finishes: Grezzo and Paris
 Appearance: Irregular
 Material: Concrete
 Usage: Walls only
 Shade Variation: V1 - Uniform

Search for **nexus** at solusceramics.com for more information about this range

Colours:



Syre 5PHC105

Fringe 5PHC104

Cast 5PHC103



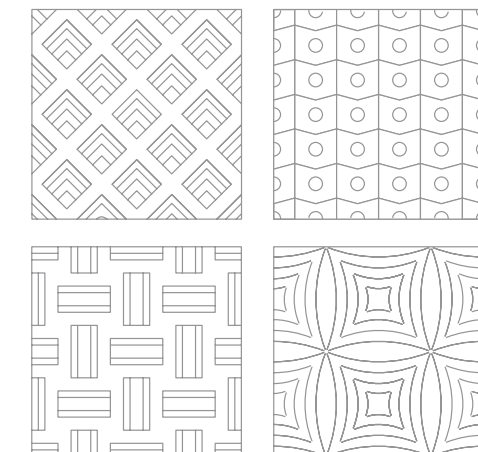
Zeek 5PHC102

Helix 5PHC101

Size (mm):



Designs:



Designs are randomly packed. Please ask for details.



SHORYU

namay usatowaku
hokaido ramen
ni sifi -
bakes hokaido ramen

STEAMED
BUNS

hokaido ramen
bakes hokaido ramen

RAMEN
BARS

case study



Shoryu Oxford

Case study

Bringing Hakata to historic Oxford

Based in the heart of Oxford, Shoryu Ramen is a new restaurant that serves Hakata tonkotsu ramen, a speciality dish from Fukuoka, a city on the island of Kyushu, located on the southern coast of Japan.

Designed by Blenheim Design, the principal idea for the restaurant was based on the belief that life moves through five phases - fire, water, metal, wood and earth. These elements were sensitively incorporated throughout the restaurant space to create a harmonious and ordered design.

Maja Myall from Blenheim Design commented: "The brief set out by the client was to create a simple and elegant

restaurant, housing around 90 diners, whilst fusing two different cultures. We had to be respectful to Oxford's historic past whilst the interior remained instantly recognisable as a Japanese restaurant.

"Our design team dedicated a substantial amount of time to researching principles of Hakata's historic building techniques and the local Oxford architecture to create a unique standout restaurant."

Oak, stone and bronze provide a nod to historic Oxford, whilst Japanese elements come from illuminated rice lanterns, bamboo and suspended sake box screens. >



Featuring bespoke, customisable floor tiles

A nine-metre long, open theatre kitchen creates a main focal point in the restaurant, and it is here where Solus' tiles are most prominent. A bespoke colour mix from the popular Program 2 range was crafted for the floor, showcasing a selection of triangle shapes in black and white, the tiles were applied to the apron area in front of the kitchen.

On a raised cocktail bar, the designers utilised tiles from the highly customisable Polygon range, a unique speckled collection that can be personalised with a choice of geometric prints in a huge array of bold, solid colours.

Maja continued: "Blenheim Design has been working together with Solus for the past five years and we've specified Solus on all Shoryu projects so far and they never fail to deliver. The design was something that we were really proud of and we are thrilled to announce that we have just won the 'Silver A' design award for Shoryu. It is great to see our designs being recognised by industry professionals. After beating off competition from over 40,000 applicants from around the world, we're ecstatic with our recent win and look forward to continuing to work with Solus in the near future." ♦



2TCJ108



2PRG259

Another stunning Shoryu restaurant

“

Shoryu Oxford has been a fantastic project to work on from start to finish. Having worked on multiple Shoryu restaurants previously, we had a good understanding of the brief set out by the client and what ranges to recommend.

The modern, customisable characteristics of the Polygon range perfectly complemented the other various finishes we supplied, and worked especially well with the more traditional geometry of the Program 2 patterns.”

Mark Ayliffe, Solus Area Sales Manager
markayliffe@solusceramics.com



Tiles used in this project:

Pattern059 2PRG259, Program 2 range
Modena 2TCJ108, Polygon range

For more information please visit solusceramics.com

polymeric

Terrazzo
Floors and walls

2KPC106

2KPC102

2KPC106
d202





polymeric

Celebrating the timeless quality of terrazzo

Originating in 15th Century Venice as an attractive way to use leftover pieces of marble, granite and quartz, terrazzo has remained one of the most popular finishes throughout history, and to this day is a sought after and desirable style for interior and exterior projects.

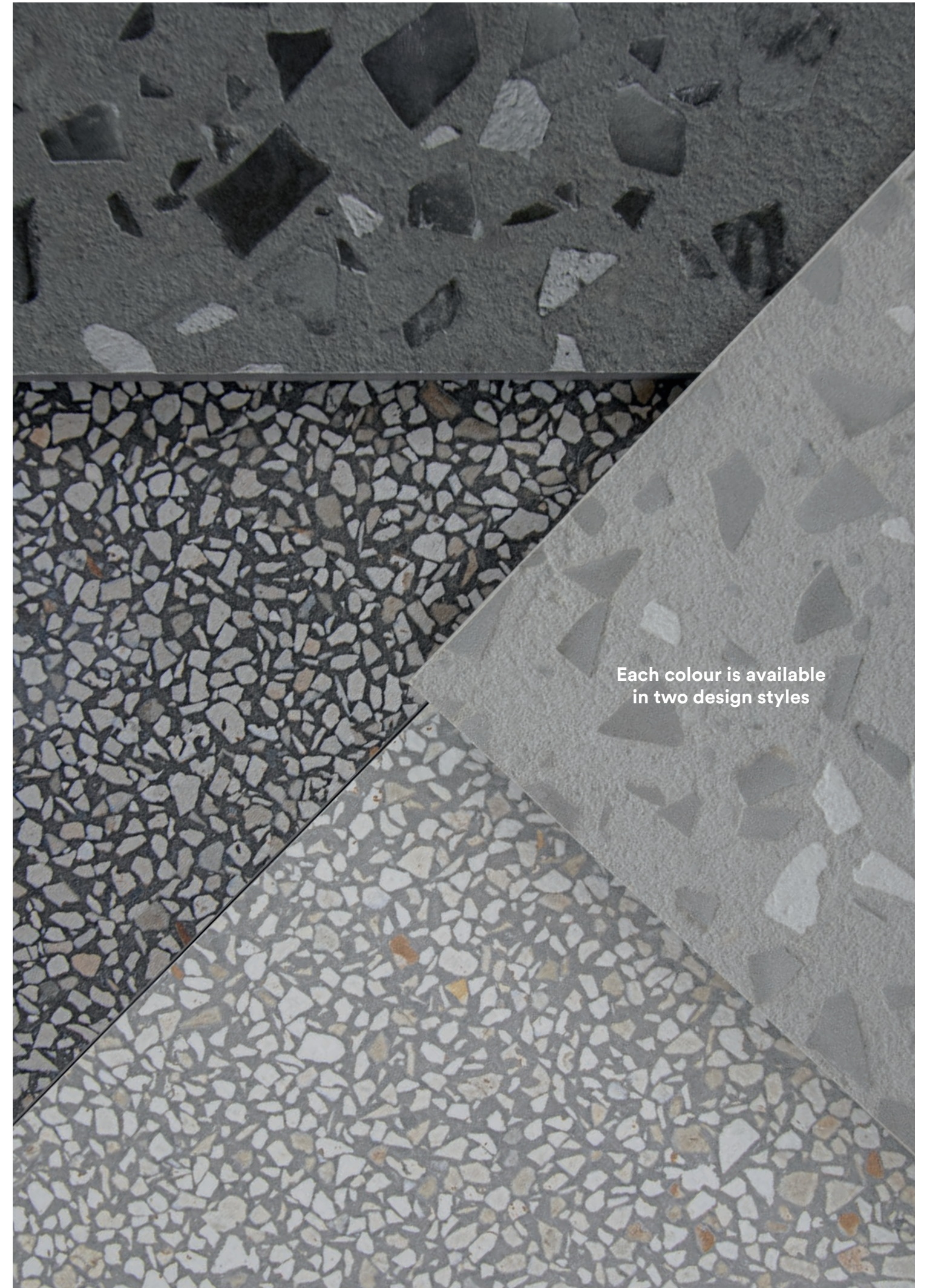
Seen as an alternative to the captivating majesty of marble, terrazzo is a timeless material that defies the notion of 'designer trends', having both man-made yet organic qualities, and effortlessly suiting contemporary or classic projects.

To satisfy the demand for terrazzo, Solus are delighted to introduce Polymeric, a stunning new porcelain range that has been created to bridge the traditional and modern aspects of terrazzo into a versatile, commercial collection.

Available in four distinctive colours, Polymeric offers two 'flavours' of each. The first option is described as a miniature terrazzo effect, in which the tiles display a fine to medium size grain, mimicking the styles more commonly seen in the 20th Century.

The second style features bolder medium to large size dynamic flecks that evoke the more traditional Venetian style. These tiles exhibit an array of matt and glossy slivers that create lively flickers and reflections on the surface of the tiles.

In addition to the eight standard variations, the range also includes a series of beautiful patterned décor tiles, featuring a uniform 'dot' pattern and a more traditional fan pattern. ♦



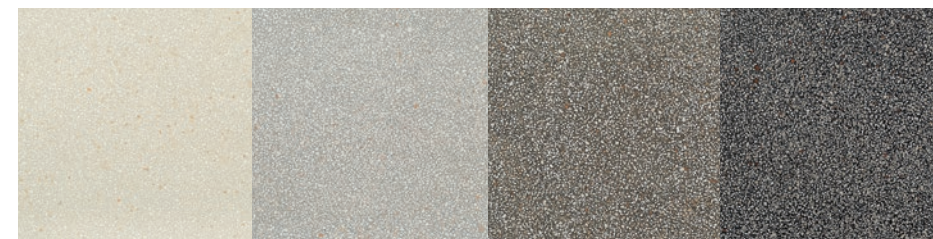


polymeric technical details:

Search for **polymeric** at solusceramics.com for more information about this range

Finishes: **Natural and Lucidato**
Appearance: **Terrazzo**
Material: **Porcelain**
Usage: **Floors and walls**
Shade Variation: **V2 - Light**

Colours:

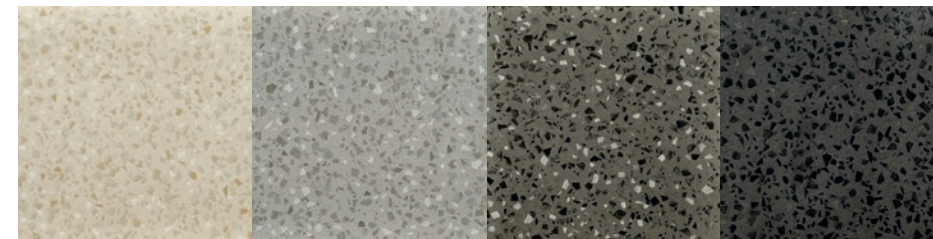


Composite 2KPC105 Variety 2KPC106 Chemistry 2KPC107 Merging 2KPC108

Décors:

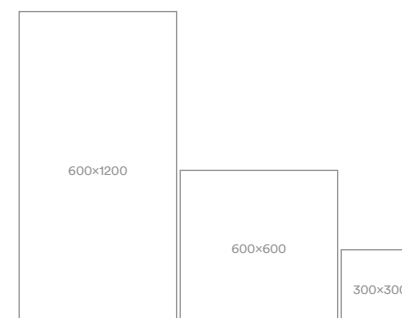


Décor A 600x600mm Décor B 600x600mm

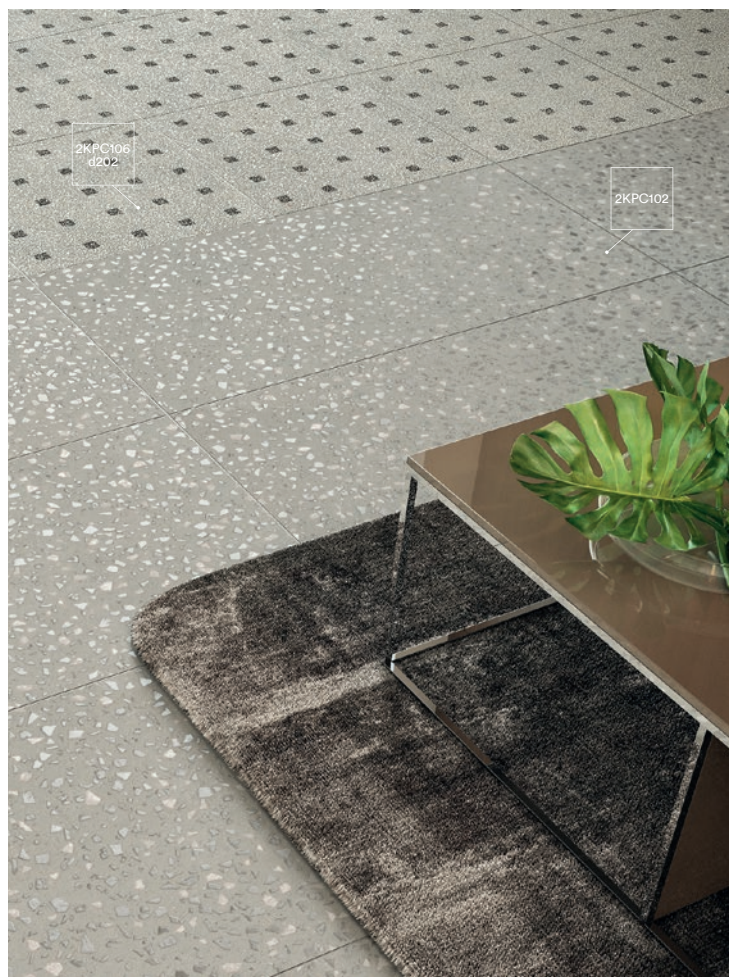


Combine 2KPC101 Union 2KPC102 Compound 2KPC103 Fusion 2KPC104

Sizes (mm):



PTV results available upon request.



Exploring the many facets of terrazzo

BIALA SYNAGOGUE

SMDL255

Bespoke
mosaic

case study

SWL105



Biala Synagogue

Case study

A new community centre in Stamford Hill

Located in Stamford Hill in North London, the Biala Synagogue Community Centre has undergone a complete renovation and refurbishment led by LS Architectural Designs.

The community centre comprises a main synagogue worship hall, ancillary prayer rooms, reading hall, library, function venue and kitchen as well as ritual mikvah baths.

Porcelain tiles were used extensively in the mikvah facilities, which include a suite of ceremonial pools, communal changing spaces and showers. The colouring of the changing

rooms and shower area was chosen to provide a premium feel, keeping the aesthetics sleek and stylish, whilst still feeling warm and cosy.

Luxurious, golden, marble effect porcelain tiles from the Marbalite range were applied to the walls in a polished finish. This provided the plush style sought by the designer. The wall tiles were embellished with borders and accents of a custom blend mosaic that was created specially for the project, and was designed to be coherent with the blue, grey and beige palette used elsewhere in the scheme. >



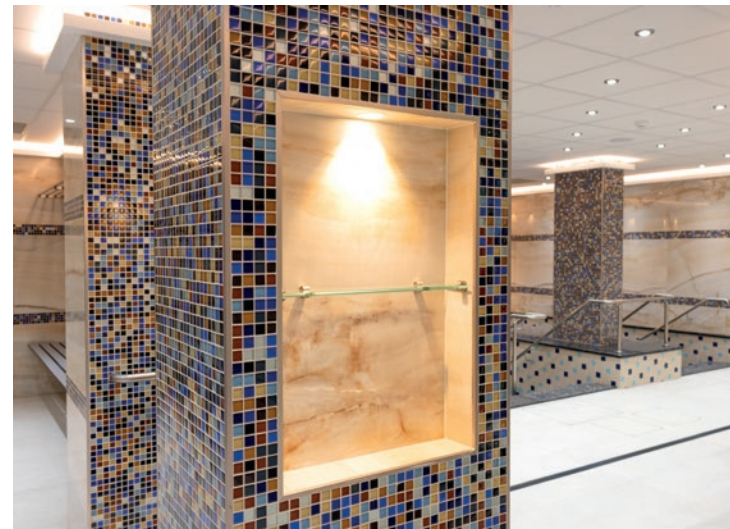
The pool tiles were custom cut to create an elaborate geometric pattern

For the mikvah pools, the brief was to create a clinical aesthetic, centred on a palette of blue shades. Solus supplied a special composite stone range that incorporated small mirror shards, creating glittering sparkles of light through water in the pools. Various shades of blue and beige were custom cut in order to create the woven effect pattern in and around the pools.

Finally, a concrete inspired colour option from the Foundry range was used on the floors throughout the space. The neutral hued tiles feature delicate cement-like textures with a matt finish, providing a pleasing juxtaposition to the glossy surfaces used elsewhere.

Architect Liebel Schlesinger, LS Architectural Designs, said: "I have worked with Solus for a few years now, and knew that they could be accommodating for the wide range of customisation we required to complete the mikvah baths. The response to the design has been overwhelmingly positive." ♦

The designer chose various colours from the Icedgems range to create a unique bespoke mosaic mix

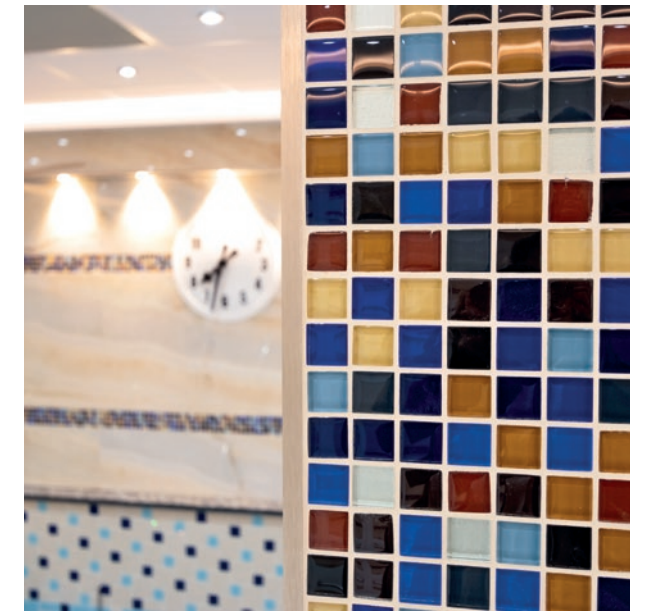


A warm, inviting area embellished with various bespoke pieces

“

We were so pleased to collaborate with LS Architectural Designs, and the Biala Synagogue Community Centre was an exciting yet complex project to get involved with. The design showcases some of our most luxurious, contemporary collections as well as our ability to create unique, one-of-a-kind mosaic mixes and bespoke fabricated material.”

Jo Burley, Solus Area Sales Manager
joburley@solusceramics.com



Tiles used in this project:

- Online 3MDL255, Marbalite range
- Bushbury 3WLT103, Foundry range
- Vacanza 71ST104, Glitz range
- Vetrino 71ST103, Glitz range
- Langdale 71ST114, Glitz range
- Bespoke Mosaic, Icedgems range

For more information please visit solusceramics.com



Bespoke
slabs on demand



Bespoke slabs on demand

Create impressive, original and unique porcelain slabs

A step forward in the creation of unique, bespoke ceramic wall slabs, Solus are now able to offer a new process allowing designers to invent their own ceramic artwork by using the latest technological advancements.

Users can choose from a huge range of existing designs, including beautiful gradients, lush botanical motifs, modern tartan prints and abstract terrazzo artwork and customise them using any combination of colours from a palette of trendy muted shades.

Other existing designs include art deco inspired illustrations, structural and colourful geometric patterns and uniform, two-tone square prints.

Alternatively, designers can submit their own graphic drawings or photographs, which can be converted to tile designs and applied to almost any sized slab from 600x600mm up to 1600x3200mm and everything in between. This allows users to flex their imaginative capabilities and create truly exceptional, unique and original surface coverings.

Launched at Coverings 2018 in Atlanta, Solus are delighted to announce that full sized examples of this range are now on display at their fantastic Clerkenwell Showroom.

If you are interested in utilising one of the off-the-shelf designs or would like to discuss creating your own personalised decorative slab, please visit one of our showrooms or contact our sales team. ♦

How does it work?



"The tile I want doesn't exist!"

For designers looking for unique and special tiles that are not available from distributors, bespoke slabs can provide the creative freedom to realise almost any imaginable design.

Find a design or draw a concept

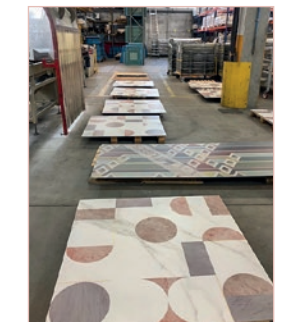
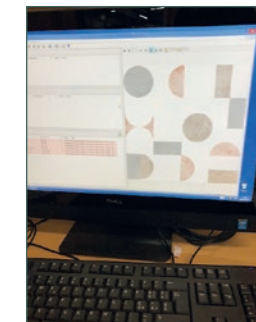
Designers have the freedom to provide a totally original design, whether it be a simple pattern or a complex graphic print. This is then used in the production process to create the tile.

Tiles are prepared and processed

Production can range from a single piece to a full run of thousands of tiles. Tiles are printed with a high quality, hard-wearing finish that is suitable for both commercial and residential wall installations.

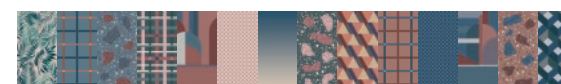
6-8 weeks later, tiles arrive

Due to the bespoke production technique, most orders will take 8 weeks to arrive from conception to completion. Tiles can be further customised with bespoke cutting.



An almost endless array of sizes and formats

Whilst Solus are showcasing 1200x2400mm slabs at Solus Clerkenwell, this only provides a small selection of the sizes designers can choose from. Any commonly sized large format tile, from 1200x1200mm up to 1600x3200mm, and all of the square and rectangle formats in between can be considered. If smaller sizes are required, bespoke cutting and fabrication techniques can be employed.





CPD seminars with Solus

Solus are proud to offer a number of CPD seminars to professionals in the design industry. As part of their continuing commitment to customer support, CPD seminars are totally complimentary to any interested parties including past clients and new contacts.

These CPDs, which are all themed around the subject of tiles and tile installation, will help you to develop your knowledge and appreciation of diverse tile related subjects such as safety information, innovative tile products, British Standards and sustainable tile production.

CPDs can be arranged at a time to suit you and can be held at your own workplace or a meeting point of your choice, as long as sufficient facilities are available. Alternatively, Solus welcomes you to take part in CPDs at their Birmingham HQ or their Baker Street and Clerkenwell showrooms. In addition to taking part in a CPD seminar, which is presented by an experienced and knowledgeable team member, Solus will also provide a free lunch for attendees.

Solus are happy to accommodate both small, team gatherings and large group sessions. ♦

Book your free seminar at
solusceramics.com
0121 753 0777
info@solusceramics.com



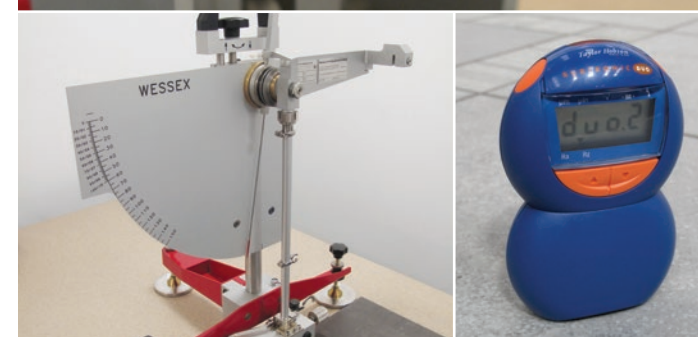
Duration: 45 to 60 minutes

The seminar includes information on the equalities act and British Standards, as well as Slip Resistance requirements, wet area tiling, movement joints, NCS colour scheme, calibration and corundum inserts.

An overview of tile specification

The main aims of this seminar are to:

- Provide the specifier with ongoing technical and product information as part of continuous professional development
- Discuss subjects which will help the specifier utilise floor and wall tiles avoiding any potential issues
- Provide knowledge and technical support in all areas of supply right through to installation
- To ensure correct detailing for the laying and application of ceramic and porcelain tiles



Duration: 45 to 60 minutes

Don't slip up

This bespoke seminar will provide you with:

- The latest guidance on anti slip floor tiles and the testing procedures
- A video demonstration of the ramp test (DIN 51130 and DIN 51097) and live demonstrations of the Wessex pendulum machine and surface roughness meter
- Up-to-date HSE anti slip guidelines for commercial floor tiling
- Specific project risk assessment, function before form
- Site conditions, user behaviour, possible contaminants, maintenance

CLERKENWELL SHOWROOM

80 CLERKENWELL ROAD
LONDON, EC1M 5RJ

sales@solusceramics.com

+44 (0) 203 282 8466