

Aggrelite

6 COLOURS | 3 FINISHES | 8 SIZES



S
O
LUS



Floor:
3AGG103

Aggrelite

A stylishly minimal terrazzo, Aggrelite is appropriate for use on walls and floors. A range of finishes, sizes, and subtle colours allows Aggrelite to create an understated backdrop for your design features.



S
LUS

Solus Plus ranges are responsibly sourced in line with the BES 6001 standard.

For more information, [click here](#)

Floor:
3AGG105

Aggrelite



ABOVE
Floor:
3AGG106
Wall:
3AGG106

RIGHT
Floor:
3AGG101
3AGG105



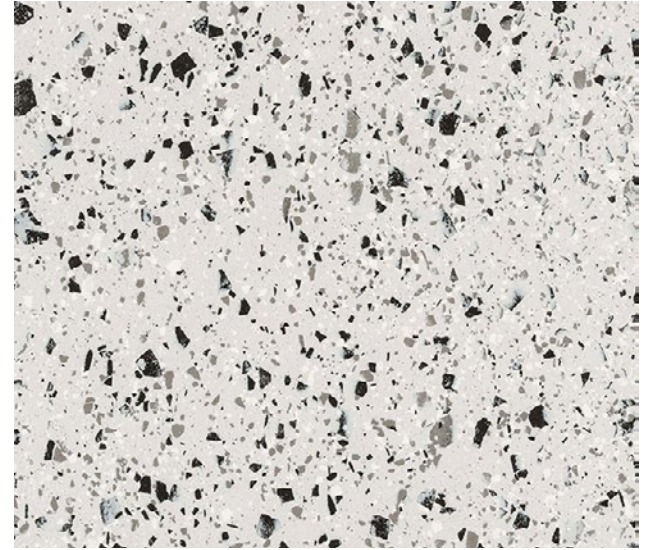
ABOVE
Floor:
3AGG101
Wall:
3AGG105



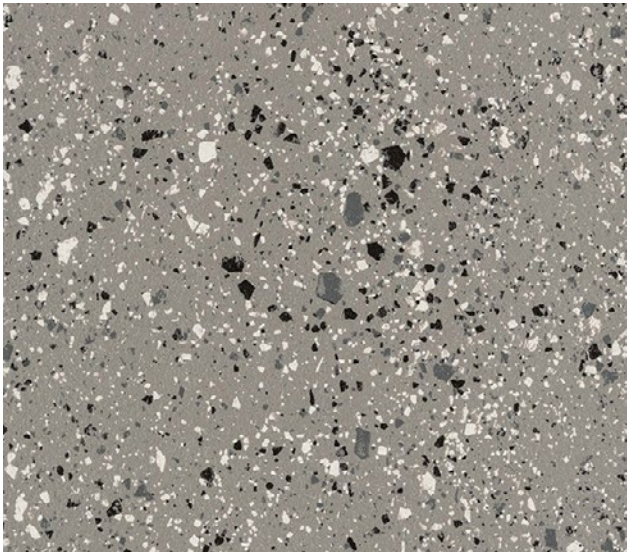
AGG-Beige
3AGG106



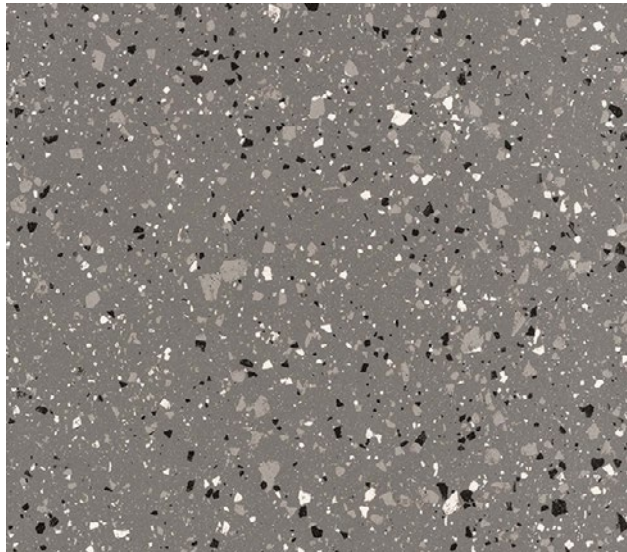
AGG-White
3AGG105



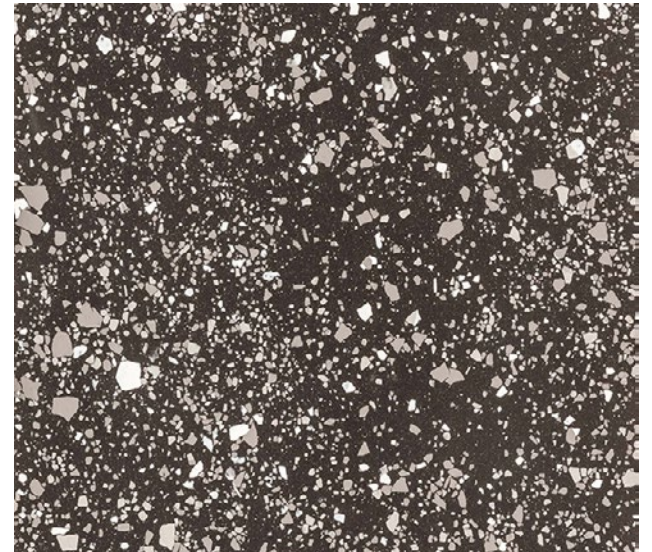
AGG-Silver
3AGG104



AGG-Grey
3AGG103



AGG-Ash
3AGG102



AGG-Black
3AGG101



Floor :
3AGG104

SIZES AND FINISHES

	300x600 9.3mm	300x600 10mm	600x600 9.3mm	600x600 10mm	600x600 14mm	600x1200 9.3mm	600x1200 9.3mm	600x1200 10mm
All colours								
					Natural R10 (A+B)*	Polished		Anti Slip R11

NOTES

To avoid lippage we recommend the use of self-levelling spacers.

* Natural R10 (A+B) is not suitable for beach, swimming pool and /or changing rooms.

Aggrelite

APPEARANCE

Terrazzo

MATERIAL

Porcelain - Full Body

USAGE

Floors and Walls

SHADE VARIATION

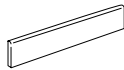
V3 - Moderate

SPECIAL PIECES

For more information contact our sales team.

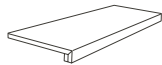
BATTISCOPIA

90x600mm



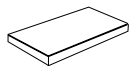
GRADONE ASSEMBLATO

1200x330mm



ANGOLARE ASSEMBLATO

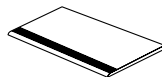
1200x330mm



GRADINO

300x600mm

300x1200mm



ISO 10545 RESULTS

2. DIMENSIONS AND SURFACE QUALITY

Conforms

3. WATER ABSORPTION

$\leq 0.1\%$

4. FLEXURAL STRENGTH

45 N/mm²

6. DEEP ABRASION RESISTANCE

$> 150 \text{ mm}^3$

8. LINEAR THERMAL EXPANSION

$6 \times 10^{-6} \text{ }^\circ\text{C}$

9. THERMAL SHOCK RESISTANCE

No rating

10. MOISTURE EXPANSION

No rating

12. FROST RESISTANCE

Conforms

13. CHEMICAL RESISTANCE

Conforms

14. STAIN RESISTANCE

Class 4-5

SLIP RESISTANCE (DIN 51130-51097)

Natural R10 (A+B)
Anti Slip R11

CERTIFICATIONS:



EPD: Available
ISO 14001
SASO-Approved

For LEED, BREEAM and WELL information, please ask for details. On request tiles can be tested to BS EN 16165:2021. HSE surface roughness and NCS Colour values are also available upon request. All sizes shown are nominal. Due to the printing process and differing screen values actual tile colours may vary. E&OE. © Solus Ceramics Limited 2025. 002.



Solus Plus ranges are responsibly sourced in line with the BES 6001 standard for the responsible sourcing of construction products.

BIRMINGHAM
Unit 1 Cole River Park
Warwick Road B11 2QX

LONDON
80 Clerkenwell Road
EC1M 5RJ

MANCHESTER
14 Kennedy Street
M2 4BY

solusceramics.com
+44 (0)121 753 0777
sales@solusceramics.com

The logo for Solus Plus is displayed in large, white, sans-serif capital letters. The word "SOLUS" is stacked vertically, with "SO" on the top line, "LU" on the middle line, and "S" on the bottom line. To the right of the word "SOLUS" is a green circular icon containing a white plus sign (+). The background of the entire page is a photograph of large mounds of light-colored aggregate material, such as sand or gravel, with a vertical concrete pillar in the center.

SOLUS

About Solus Plus

Solus Plus is our new mark of assurance for responsibly sourced products. Built on the rigorous standards of BES 6001, it highlights collections produced by factories that demonstrate industry-leading sustainability across their entire supply chain, from raw material extraction to final delivery.

When specified through Solus, these products can contribute valuable credits toward BREEAM, LEED and WELL certification, helping you meet your environmental targets without compromising on quality or design. Look for the Solus Plus symbol to specify with confidence.

[Visit our website to learn more.](#)

[Back to top](#)