

Architek

5 COLOURS | 1 FINISH | 5 SIZES



S
O
S
L
U
S

Floor:
2FJY101

Architek

Architek is a versatile concrete effect porcelain material that has been specifically created to complement both commercial and residential urban influenced architectural projects.



Floor:
2FJY103



ABOVE
Floor:
2FJY104

RIGHT
Floor:
2FJY103



ABOVE
Floor:
2FJY102

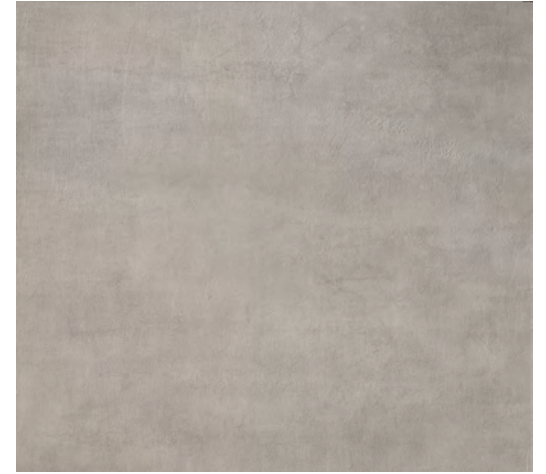
Wall:
2FJY102



Builder
2FJY105



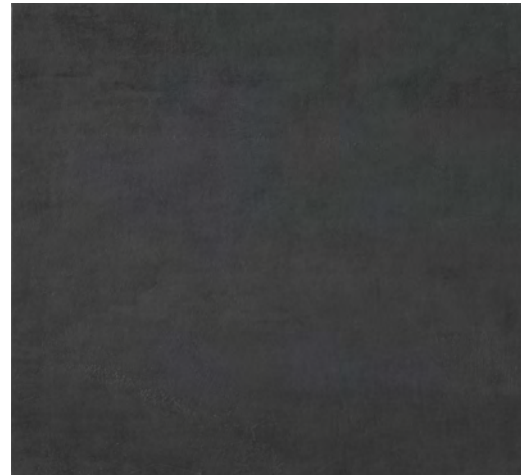
Structure
2FJY102



Designer
2FJY101



Planner
2FJY104








Engineer
2FJY103



Floor:
2FJY101

SIZES AND FINISHES

					
	300x600 9mm	375x755 9mm	600x600 9mm	755x755 9mm	755x1510 9mm
All colours	♥	♥	♥	♥	♥

♥ Natural R10 (A+B)

MOSAICS



Mosaic A

Available in all colours

300x300x9mm (60x60mm chips)

Natural R10 (A+B)

APPEARANCE

Concrete

MATERIAL

Porcelain

USAGE

Floors and Walls

SHADE VARIATION

V3 - Moderate

SPECIAL PIECES

Available in all colours.

For more information contact our sales team.

BATTISCOPIA

70x600mm

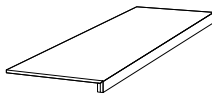
70x755mm



GRADINO

300x600mm

375x755mm



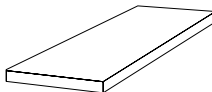
GRADONE

330x755mm



ANGALORE

330x755mm



ISO 10545 RESULTS

2. DIMENSIONS AND SURFACE QUALITY

Conforms

3. WATER ABSORPTION

< 0.1%

4. FLEXURAL STRENGTH

> 45 N/mm²

6. DEEP ABRASION RESISTANCE

Conforms

8. LINEAR THERMAL EXPANSION

6×10^{-6} °C

9. THERMAL SHOCK RESISTANCE

No rating

10. MOISTURE EXPANSION

No rating

12. FROST RESISTANCE

Conforms

13. CHEMICAL RESISTANCE

Conforms

14. STAIN RESISTANCE

Conforms

SLIP RESISTANCE (DIN 51130)

Natural R10 (A+B)

MANUFACTURER CERTIFICATIONS:



EPD: Available

ISO 14001

For LEED, BREEAM and WELL information, please ask for details. On request tiles can be tested to BS EN 16165:2021. HSE surface roughness and NCS Colour values are also available upon request. All sizes shown are nominal. Due to the printing process and differing screen values actual tile colours may vary. E&OE. © Solus Ceramics Limited 2024. 007.