

Calmstone

6 COLOURS | 3 FINISHES | 8 SIZES | 3 MOSAICS | 1 DECOR



SO
LUS



Floor:
2CMN101
Wall:
2CMN101
Counter:
2CMN101D001

Calmstone

Calmstone is a serene stone-effect porcelain range available in six mineral tones, three finishes, and a wide selection of sizes and mosaics. Designed for seamless application across floors, walls, and counters, it brings quiet elegance to any space.

S
O
LUS 

Solus Plus ranges are responsibly sourced in line with the BES 6001 standard.

For more information, [click here](#)



Floor:
2CMN101
Wall:
2CMN101
2CMN101M003

Calmstone



ABOVE
Floor:
2CMN103
Wall:
2CMN103
2CMN103M001
2CMN103D001



RIGHT
Floor:
2CMN103



ABOVE
Floor:
2CMN105
Wall:
2CMN105



CMN-White
2CMN101



CMN-Beige
2CMN102



CMN-Grey
2CMN105



CMN-Sand
2CMN103



CMN-Taupe
2CMN104



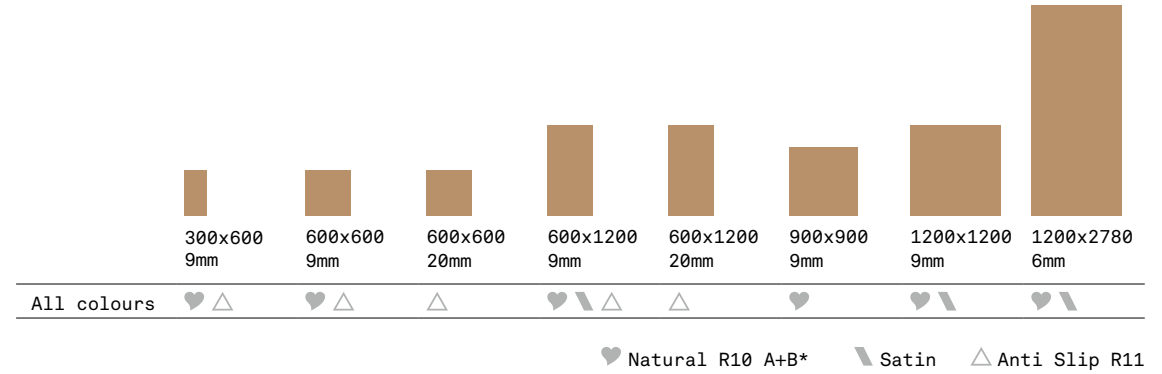
CMN-Dark
2CMN106



Floor:
2CMN103

Wall:
2CMN103

SIZES AND FINISHES



NOTES

* Natural R10 A+B finish not suitable for use for pool decks and/or changing rooms.

MOSAICS AND DECORS



CMN-White Mosaic A
2CMN101M001
300x300x9mm (50x50 chips)
Matt



CMN-Beige Mosaic A
2CMN102M001
300x300x9mm (50x50 chips)
Matt



CMN-Grey Mosaic A
2CMN105M001
300x300x9mm (50x50 chips)
Matt



CMN-Sand Mosaic A
2CMN103M001
300x300x9mm (50x50 chips)
Matt



CMN-Taupe Mosaic A
2CMN104M001
300x300x9mm (50x50 chips)
Matt



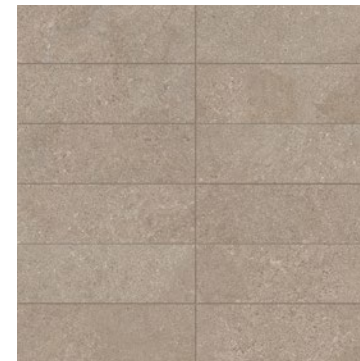
CMN-Dark Mosaic A
2CMN106M001
300x300x9mm (50x50 chips)
Matt



CMN-White Mosaic B
2CMN101M002
300x300x9mm (50x150 chips)
Matt



CMN-Beige Mosaic B
2CMN102M002
300x300x9mm (50x150 chips)
Matt



CMN-Sand Mosaic B
2CMN103M002
300x300x9mm (50x150 chips)
Matt



CMN-Grey Mosaic B
2CMN105M002
300x300x9mm (50x150 chips)
Matt

MOSAICS AND DECORS



CMN-Taupe Mosaic B
2CMN104M002
300x300x9mm (50x150 chips)
Matt



CMN-Dark Mosaic B
2CMN106M002
300x300x9mm (50x150 chips)
Matt



CMN-White Mosaic C
2CMN101M003
295x295x9mm
Matt



CMN-Beige Mosaic C
2CMN102M003
295x295x9mm
Matt



CMN-Sand Mosaic C
2CMN103M003
295x295x9mm
Matt



CMN-Grey Mosaic C
2CMN105M003
295x295x9mm
Matt



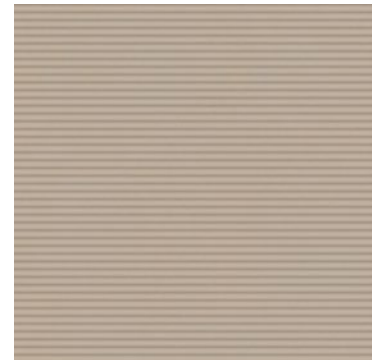
CMN-Taupe Mosaic C
2CMN104M003
295x295x9mm
Matt



CMN-Dark Mosaic C
2CMN106M003
295x295x9mm
Matt



CMN-White Decor
2CMN101D001
600x1200x9mm
Matt



CMN-Beige Decor
2CMN102D001
600x1200x9mm
Matt



Floor:
2CMN101
2CMN106
Wall:
2CMN106
Counter:
2CMN106D001

MOSAICS

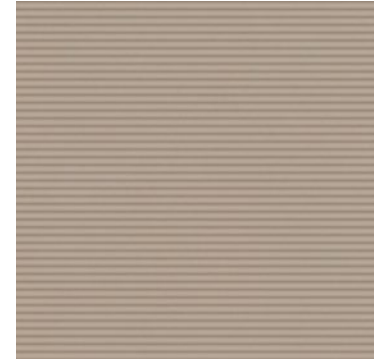


CMN-Grey Decor

2CMN105D001

600x1200x9mm

Matt

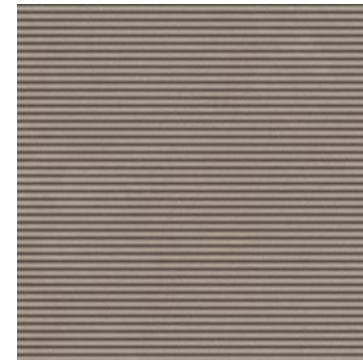


CMN-Sand Decor

2CMN103D001

600x1200x9mm

Matt

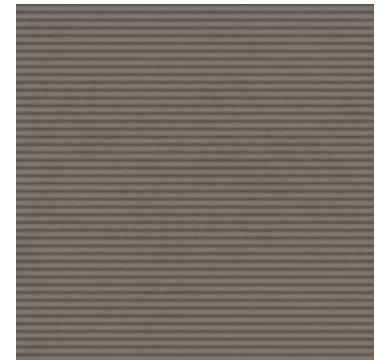


CMN-Taupe Decor

2CMN104D001

600x1200x9mm

Matt



CMN-Dark Decor

2CMN106D001

600x1200x9mm

Matt

Calmstone

APPEARANCE

Stone

MATERIAL

Porcelain

USAGE

Floors and Walls

SHADE VARIATION

V2 - Light

SPECIAL PIECES

For more information contact our sales team.

BATTISCOPIA

70x600mm

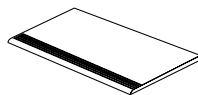
70x900mm



GRADINO

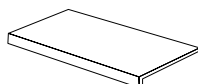
300x600mm

300x1200mm



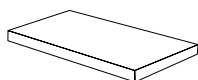
GRADONE ASSEMBLATO

1200x330x40



ANGOLARE ASSEMBLATO

1200x330x40



ISO 10545 RESULTS

2. DIMENSIONS AND SURFACE QUALITY

Conforms

3. WATER ABSORPTION

$\leq 0.1\%$

4. FLEXURAL STRENGTH

45 N/mm²

6. DEEP ABRASION RESISTANCE

$\leq 150 \text{ mm}^3$

8. LINEAR THERMAL EXPANSION

$6 \times 10^{-6} \text{ }^\circ\text{C}$

9. THERMAL SHOCK RESISTANCE

No rating

10. MOISTURE EXPANSION

No rating

12. FROST RESISTANCE

Conforms

13. CHEMICAL RESISTANCE

Conforms

14. STAIN RESISTANCE

Conforms

SLIP RESISTANCE (DIN 51130-51097)

Natural R10 A+B
Anti Slip R11

CERTIFICATIONS:



BES 819709

EPD: Available

ISO 14001

SASO-Approved

For LEED, BREEAM and WELL information, please ask for details. On request tiles can be tested to BS EN 16165:2021. HSE surface roughness and NCS Colour values are also available upon request. All sizes shown are nominal. Due to the printing process and differing screen values actual tile colours may vary. E&OE. © Solus Ceramics Limited 2026. 001a.



Solus Plus ranges are responsibly sourced in line with the BES 6001 standard for the responsible sourcing of construction products.

BIRMINGHAM
Unit 1 Cole River Park
Warwick Road B11 2QX

LONDON
80 Clerkenwell Road
EC1M 5RJ

MANCHESTER
14 Kennedy Street
M2 4BY

solusceramics.com
+44 (0)121 753 0777
sales@solusceramics.com

The logo consists of the word "SOLUS" in a large, white, sans-serif font, stacked vertically. To the right of the word, there is a green circular icon containing a white plus sign (+).

S
O
L
U
S

About Solus Plus

Solus Plus is our new mark of assurance for responsibly sourced products. Built on the rigorous standards of BES 6001, it highlights collections produced by factories that demonstrate industry-leading sustainability across their entire supply chain, from raw material extraction to final delivery.

When specified through Solus, these products can contribute valuable credits toward BREEAM, LEED and WELL certification, helping you meet your environmental targets without compromising on quality or design. Look for the Solus Plus symbol to specify with confidence.

[Visit our website to learn more.](#)

[Back to top](#)