

Chiltern Stone

7 COLOURS | 3 FINISHES | 16 SIZES | 3 MOSAICS



SOS
LUS



Floor:
3PSP361
Wall:
3PSP361

Chiltern Stone

Chiltern Stone is a beautiful range of natural looking porcelain which comes in a number of earthy tones in many diverse sizes.

S
O
LUS 

Solus Plus ranges are responsibly sourced in line with the BES 6001 standard.

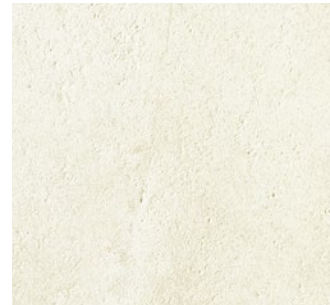
For more information, [click here](#)



Floor:
3PSP361



Walk Way:
3PSP361



Lacey
3PSP361



Wyfold
3PSP363



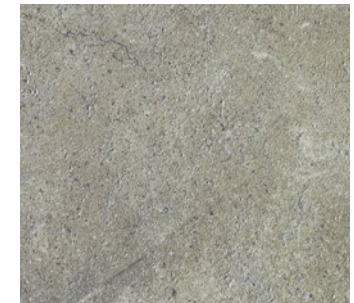
Chinnor
3PSP364



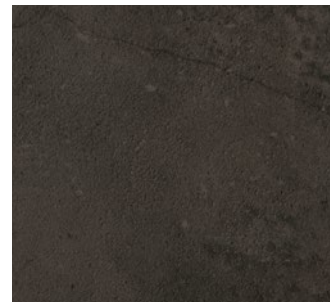
Wendover
3PSP362



Admail
3PSP367



Chalfont
3PSP365



Potten
3PSP366

SIZES AND FINISHES

	300x300 9mm	300x600 9mm	450x900 9mm	600x600 9mm	600x600 20mm	600x1200 6mm	600x1200 9mm	600x1200 20mm	900x900 9mm	900x900 20mm	1200x1200 6mm	1200x1200 9mm	1200x1200 20mm	1200x2400 6mm	1200x2780 6mm	1600x3200 12mm
Lacey	♥	♥■	♥	♥■△	△	♥	♥■	△	♥■	△	♥	♥	△		♥	♥
Wyfold	♥	♥■	♥	♥■△	△	♥	♥■	△	♥■	△	♥	♥			♥	
Chinnor	♥	♥■		♥■△			♥■									
Wendover	♥	♥■	♥	♥■△	△	♥	♥■	△	♥■	△	♥	♥	△		♥	
Admail	♥	♥■	♥	♥■△	△	♥	♥■	△	♥■	△	♥	♥	△	♥	♥	♥
Chalfont	♥	♥■	♥	♥■△	△	♥	♥■		♥■	△	♥	♥			♥	
Potten	♥	♥■	♥	♥■△	△	♥	♥■	△	♥■	△	♥	♥			♥	

♥ Natural R10 (A+B)* ■ Honed Polished △ Anti Slip R11 (A+B)

NOTES

* Natural R10 (A+B) finish is not suitable for use on swimming pools and/or changing rooms.

MOSAICS



Lacey Mosaic A
3PSP361M102
300x600x9mm
Natural R10 (A+B)



Wyfold Mosaic A
3PSP363M103
300x600x9mm
Natural R10 (A+B)



Chinnor Mosaic A
3PSP364M104
300x600x9mm
Natural R10 (A+B)



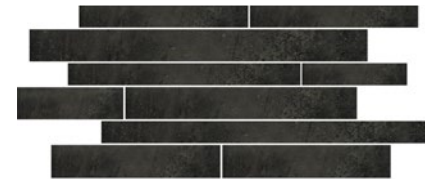
Wendover Mosaic A
3PSP362M001
300x600x9mm
Natural R10 (A+B)



Admail Mosaic A
3PSP367M107
300x600x9mm
Natural R10 (A+B)



Chalfont Mosaic A
3PSP365M105
300x600x9mm
Natural R10 (A+B)



Potten Mosaic A
3PSP366M106
300x600x9mm
Natural R10 (A+B)

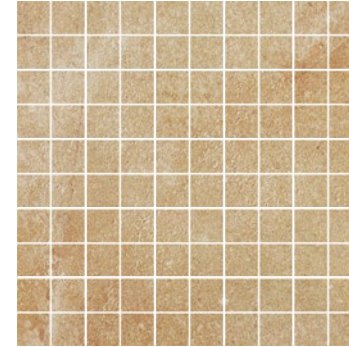
MOSAICS



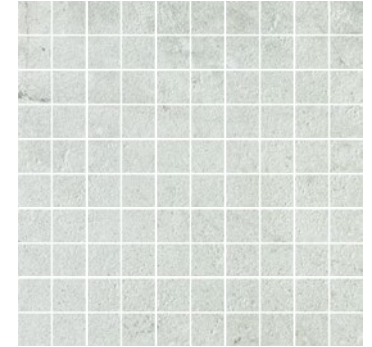
Lacey Mosaic B
3PSP361M202
300x300x9mm (3x3 chips)
Natural R10 (A+B)



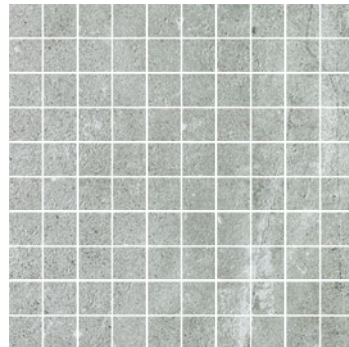
Wyfold Mosaic B
3PSP363M203
300x300x9mm (3x3 chips)
Natural R10 (A+B)



Chinnor Mosaic B
3PSP364M204
300x300x9mm (3x3 chips)
Natural R10 (A+B)



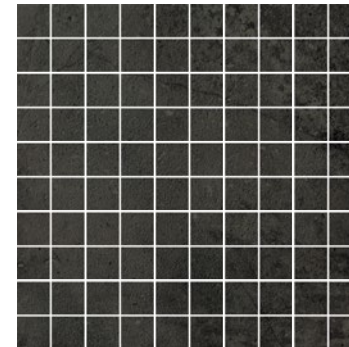
Wendover Mosaic B
3PSP362M201
300x300x9mm (3x3 chips)
Natural R10 (A+B)



Admail Mosaic B
3PSP367M207
300x300x9mm (3x3 chips)
Natural R10 (A+B)



Chalfont Mosaic B
3PSP365M205
300x300x9mm (3x3 chips)
Natural R10 (A+B)



Potten Mosaic B
3PSP366M206
300x300x9mm (3x3 chips)
Natural R10 (A+B)

MOSAICS



Lacey Mosaic C
3PSP361M302
300x300x9mm (6x6 chips)
Natural R10 (A+B)



Wyfold Mosaic C
3PSP363M303
300x300x9mm (6x6 chips)
Natural R10 (A+B)



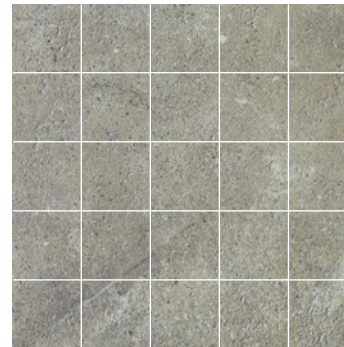
Chinnor Mosaic C
3PSP364M304
300x300x9mm (6x6 chips)
Natural R10 (A+B)



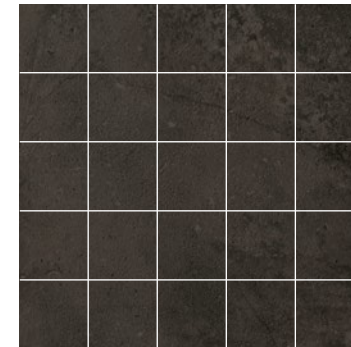
Wendover Mosaic C
3PSP362M301
300x300x9mm (6x6 chips)
Natural R10 (A+B)



Admail Mosaic C
3PSP367M307
300x300x9mm (6x6 chips)
Natural R10 (A+B)



Chalfont Mosaic C
3PSP365M305
300x300x9mm (6x6 chips)
Natural R10 (A+B)



Potten Mosaic C
3PSP366M306
300x300x9mm (6x6 chips)
Natural R10 (A+B)

Chiltern Stone

APPEARANCE

Limestone

MATERIAL

Porcelain

USAGE

Floors and Walls

SHADE VARIATION

V4 - Heavy

SPECIAL PIECES

Available in all colours.

For more information contact our sales team.

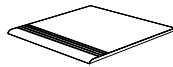
BULLNOSE

90x300, 90x450,
90x600, 90x900mm



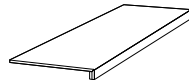
STEP TREAD

300x300, 450x450,
300x600, 300x1200mm



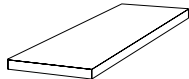
GRADONE

330x1200mm



ANGOLARE

330x1200mm



ISO 10545 RESULTS

2. DIMENSIONS AND SURFACE QUALITY

Conforms

3. WATER ABSORPTION

< 0.1%

4. FLEXURAL STRENGTH

45 N/mm²

6. DEEP ABRASION RESISTANCE

≤ 150 mm³

8. LINEAR THERMAL EXPANSION

6.6x10⁻⁶ °C

9. THERMAL SHOCK RESISTANCE

No rating

10. MOISTURE EXPANSION

No rating

12. FROST RESISTANCE

Conforms

13. CHEMICAL RESISTANCE

Conforms

14. STAIN RESISTANCE

Conforms

SLIP RESISTANCE (DIN 51130-51097)

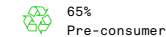
Natural R10 (A+B)
Anti Slip R11 (A+B)

CERTIFICATIONS:



EPD: Available
ISO 14001
SASO-Approved

For LEED, BREEAM and WELL information, please ask for details. On request tiles can be tested to BS EN 16165:2021. HSE surface roughness and NCS Colour values are also available upon request. All sizes shown are nominal. Due to the printing process and differing screen values actual tile colours may vary. E&OE. © Solus Ceramics Limited 2025. 023a.



Solus Plus ranges are responsibly sourced in line with the BES 6001 standard for the responsible sourcing of construction products.

BIRMINGHAM
Unit 1 Cole River Park
Warwick Road B11 2QX

LONDON
80 Clerkenwell Road
EC1M 5RJ

MANCHESTER
14 Kennedy Street
M2 4BY

solusceramics.com
+44 (0)121 753 0777
sales@solusceramics.com

The logo consists of the word "SOLUS" in a large, white, sans-serif font, stacked vertically. To the right of the "O" in "SOLUS" is a green circular icon containing a white plus sign (+).

S
O
LUS

About Solus Plus

Solus Plus is our new mark of assurance for responsibly sourced products. Built on the rigorous standards of BES 6001, it highlights collections produced by factories that demonstrate industry-leading sustainability across their entire supply chain, from raw material extraction to final delivery.

When specified through Solus, these products can contribute valuable credits toward BREEAM, LEED and WELL certification, helping you meet your environmental targets without compromising on quality or design. Look for the Solus Plus symbol to specify with confidence.

[Visit our website to learn more.](#)

[Back to top](#)