

# City Collection

4 COLOURS | 1 FINISH | 1 SIZE



S  
O  
LUS



Floor:  
2CTY101

# City Collection

Inspired by the cities of New York, London, Hong Kong, and Shanghai, City Collection offers the robust and consistent technical characteristics of porcelain with the aesthetic qualities of natural stone.

S  
O  
LUS 

Solus Plus ranges are responsibly sourced in line with the BES 6001 standard.

For more information, [click here](#)



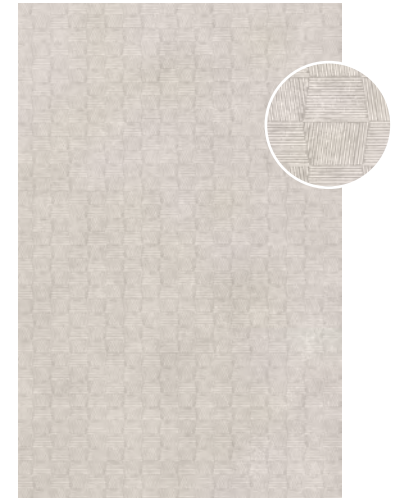
Floor:  
2CTY102  
Wall:  
2CTY102



Wall:  
2CTY103



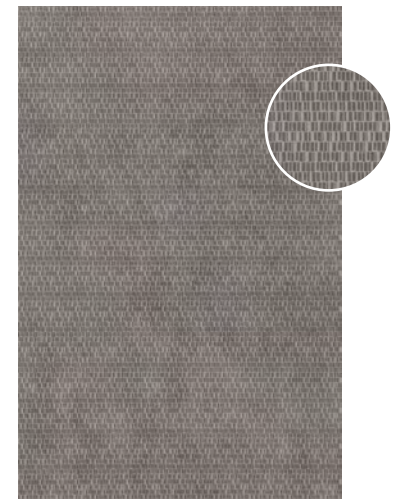
CTY-London  
2CTY102



CTY-Shanghai  
2CTY104



CTY-New York  
2CTY101



CTY-Hong Kong  
2CTY103

# City Collection

## APPEARANCE

Patterned

## MATERIAL

Porcelain

## USAGE

Floors and Walls

## SHADE VARIATION

V2 - Light

## SIZES AND FINISHES



600x1200  
9mm

All colours



● Matt R10

## ISO 10545 RESULTS

**2. DIMENSIONS AND SURFACE QUALITY**  
Conforms

**3. WATER ABSORPTION**  
 $\leq 0.1\%$

**4. FLEXURAL STRENGTH**  
 $> 45 \text{ N/mm}^2$

**6. DEEP ABRASION RESISTANCE**  
 $< 150 \text{ mm}^3$

**8. LINEAR THERMAL EXPANSION**  
 $6 \times 10^{-6} \text{ }^\circ\text{C}$

**9. THERMAL SHOCK RESISTANCE**  
No rating

**10. MOISTURE EXPANSION**  
No rating

**12. FROST RESISTANCE**  
Conforms

**13. CHEMICAL RESISTANCE**  
Conforms

**14. STAIN RESISTANCE**  
Conforms

**SLIP RESISTANCE  
(DIN 51130-51097)**  
Matt R10

## CERTIFICATIONS:



EPD: Available  
ISO 14001  
SASO-Approved

For LEED, BREEAM and WELL information, please ask for details. On request tiles can be tested to BS EN 16165:2021. HSE surface roughness and NCS Colour values are also available upon request. All sizes shown are nominal. Due to the printing process and differing screen values actual tile colours may vary. E&OE. © Solus Ceramics Limited 2025. 001.



Solus Plus ranges are responsibly sourced in line with the BES 6001 standard for the responsible sourcing of construction products.

**BIRMINGHAM**  
Unit 1 Cole River Park  
Warwick Road B11 2QX

**LONDON**  
80 Clerkenwell Road  
EC1M 5RJ

**MANCHESTER**  
14 Kennedy Street  
M2 4BY

[solusceramics.com](http://solusceramics.com)  
+44 (0)121 753 0777  
[sales@solusceramics.com](mailto:sales@solusceramics.com)

The logo consists of the word "SOLUS" in a large, white, sans-serif font, stacked vertically. To the right of the word "SOLUS" is a green circular icon containing a white plus sign (+).

S  
O  
L  
U  
S

## About Solus Plus

Solus Plus is our new mark of assurance for responsibly sourced products. Built on the rigorous standards of BES 6001, it highlights collections produced by factories that demonstrate industry-leading sustainability across their entire supply chain, from raw material extraction to final delivery.

When specified through Solus, these products can contribute valuable credits toward BREEAM, LEED and WELL certification, helping you meet your environmental targets without compromising on quality or design. Look for the Solus Plus symbol to specify with confidence.

[Visit our website to learn more.](#)

[Back to top](#)