

Crescere

8 COLOURS | 3 FINISHES | 6 SIZES | 3 DECORS | 5 MOSAICS



S
LUS

Floor:
2CRE105

Crescere

A delightfully understated limestone-effect porcelain range suitable for floors and walls. Available in smaller and larger formats, Crescere comes in a range of subtle greys and tan colours.



Floor:
2CRE105

Crescere



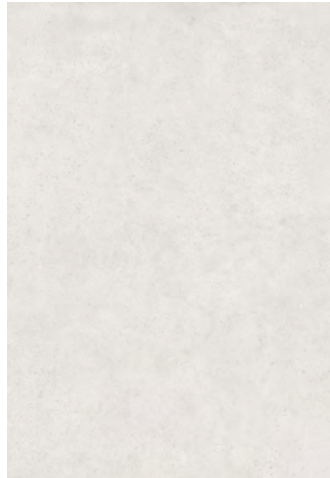
ABOVE
Floor:
2CSC106
Wall:
2CSC106

RIGHT
Floor:
2CSC108



ABOVE
Floor:
2CSC102
Wall:
2CSC102

COLOURS



CSC-Cream
2CSC101



CSC-Pearl
2CSC102



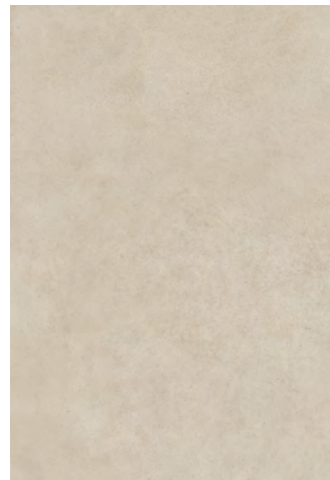
CSC-Steel
2CSC103



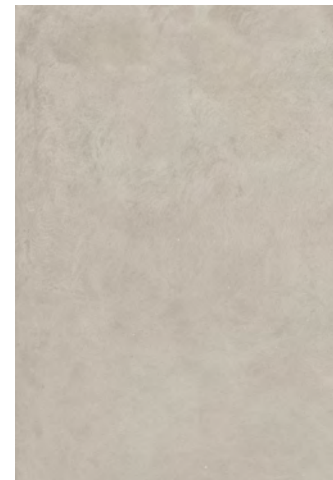
CSC-Grey
2CSC104



CSC-Dark
2CSC105



CSC-Tan
2CSC106



CSC-Pale
2CSC107

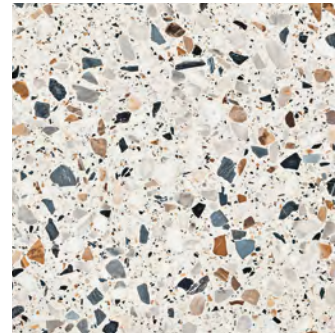


CSC-Smoke
2CSC108



Floor:
2CSC109D001

DECORS



CSC-Decor A

2CSC109D001

800x800x9mm

Textured R9



CSC-Decor B

2CSC110D002

1200x2780x6mm

Textured R9



CSC-Decor C

2CSC111D003

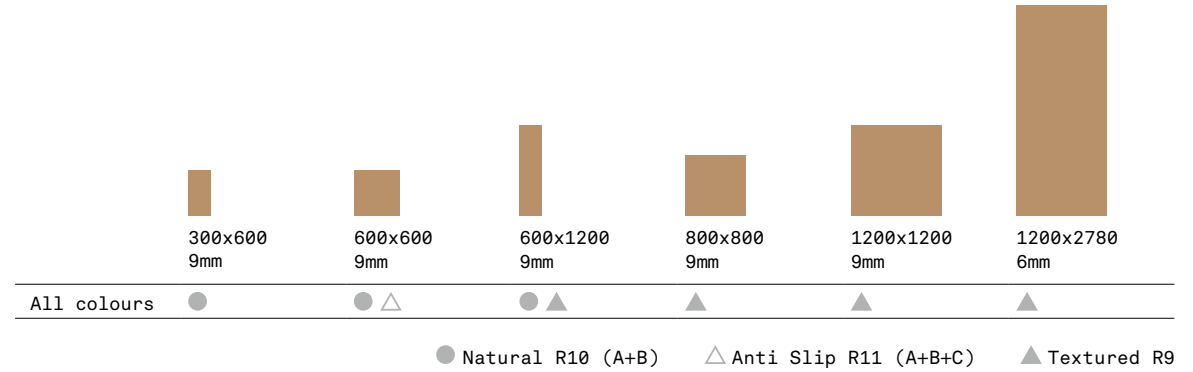
1200x2780x6mm

Textured R9

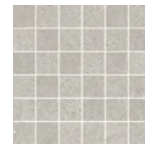


Floor:
2CSC111D003
Wall:
2CSC111D003

SIZES AND FINISHES



MOSAICS



Mosaic A
Available in all colours
300x300mm
Natural R10 (A+B)



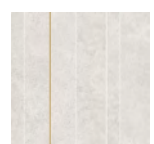
Mosaic B
Available in all colours
300x300mm
Textured R9



Mosaic C
Available in 3 different mixes:
1) CSC-Pearl and CSC-Decor A
2) CSC-Steel and CSC-Decor A
3) CSC-Tan and CSC-Decor A
300x300mm
Textured R9



Mosaic D
Available in all colours
347x400mm
Natural R10 (A+B)



Mosaic E
Available in all colours
400x400mm
Textured R9

APPEARANCE
Limestone

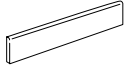
MATERIAL
Porcelain

USAGE
Floors and Walls

SHADE VARIATION
V2 - Light

SPECIAL PIECES
Available in all colours.
For more information contact our sales team.

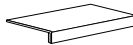
BATTISCOPIA*
72x600mm
72x800mm



GRADINO A*
300x600mm
330x800mm
330x1200mm



GRADINO B
330x600mm
330x800mm
330x1200mm



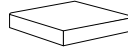
NOTES

* One-round edge shaping.

GRADINO G*
300x600mm
330x800mm



GRADINO B ANG.
330x330mm



ISO 10545 RESULTS

2. DIMENSIONS AND SURFACE QUALITY
Conforms

3. WATER ABSORPTION
 $\leq 0.1\%$

4. FLEXURAL STRENGTH
 $\geq 45-48 \text{ N/mm}^2$

6. DEEP ABRASION RESISTANCE
 $\leq 150 \text{ mm}^3$

8. LINEAR THERMAL EXPANSION
 $6.6 \times 10^{-6} \text{ } ^\circ\text{C}$

9. THERMAL SHOCK RESISTANCE
Conforms

10. MOISTURE EXPANSION
No rating

12. FROST RESISTANCE
Conforms

13. CHEMICAL RESISTANCE
Conforms

14. STAIN RESISTANCE
Class 5

**SLIP RESISTANCE
(DIN 51130-51097)**
Natural R10 (A+B)
Textured R9
Anti Slip R11 (A+B+C)

MANUFACTURER CERTIFICATIONS:

Declare.

ecovadis



EPD: Available
ISO 14001
ISO 17889-1

For LEED, BREEAM and WELL information, please ask for details. On request tiles can be tested to BS EN 16165:2021. HSE surface roughness and NCS Colour values are also available upon request. All sizes shown are nominal. Due to the printing process and differing screen values actual tile colours may vary. E&OE. © Solus Ceramics Limited 2024. 003.