

District

10 COLOURS | 3 FINISHES | 2 SIZES



S
LUS

Wall:
5BST106
5BST107

District

District is a range of gently undulating wall tiles with rustic, country kitchen flair. Available in a palette of crisp, modern colours, these tiles provide a distinctly modern interpretation of a traditional style.



Wall:
5BST107



Wall:
5BST101



Cheswick
5BST101



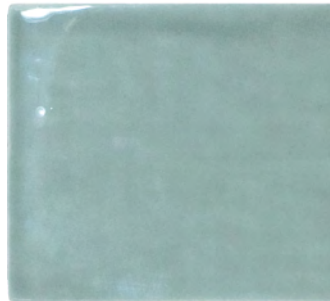
Arnos
5BST102



Warmley
5BST103



Brenty
5BST104



Henlea
5BST105



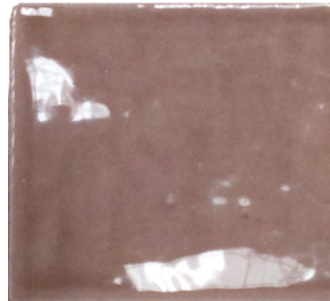
Easton
5BST106



Tyndall
5BST107



Lewin
5BST108



Horfield
5BST109



Redcliffe
5BST110



Wall:
5BST102

	75x150 8.3mm	75x300 8.3mm
Cheswick	◆ ● ⊘	◆ ●
Arnos	◆ ⊘	◆
Warmley	◆	◆
Brenty	◆ ⊘	◆
Henlea	◆	◆
Easton	◆ ⊘	◆
Tyndall	◆ ●	◆ ●
Lewin	◆	◆
Horfield	◆ ⊘	◆
Redcliffe	◆	◆

◆ Gloss ● Matt ⊘ Gloss Crackle

NOTES

It is recommended to apply sealant before grouting on all crackle glaze tiles.

APPEARANCE

Mono Colour

MATERIAL

Ceramic

USAGE

Walls only

SHADE VARIATION

V1 - Uniform

SPECIAL PIECES

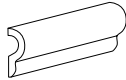
Available in all colours.

For more information contact our sales team.

LONDON

50x300mm

50x150mm



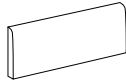
JOLLY

12x200mm



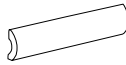
BULLNOSE

75x150mm



PENCIL BULLNOSE

30x150mm



TORELLO

20x300mm

20x150mm



ISO 10545 RESULTS

2. DIMENSIONS AND SURFACE QUALITY

Conforms

3. WATER ABSORPTION

> 10%

4. FLEXURAL STRENGTH

No rating

6. DEEP ABRASION RESISTANCE

No rating

8. LINEAR THERMAL EXPANSION

No rating

9. THERMAL SHOCK RESISTANCE

Conforms

10. MOISTURE EXPANSION

No rating

12. FROST RESISTANCE

No rating

13. CHEMICAL RESISTANCE

Conforms

14. STAIN RESISTANCE

Conforms

MANUFACTURER CERTIFICATIONS:

EPD: Available

For LEED, BREEAM and WELL information, please ask for details. NCS Colour values are also available upon request. All sizes shown are nominal. Due to the printing process and differing screen values actual tile colours may vary. E&OE. © Solus Ceramics Limited 2024. 004.