

20 COLOURS | 5 FINISHES | 11 SIZES | 3 DECORS

Elaborate

S
O
S
L
U
S



Floor:
2HAC102
Wall:
2HAC108
2HAC108D202

Elaborate

Elaborate is an inspiring range of subtle concrete effect tiles that come in a creative selection of colours ranging from greys and beiges to muted blues and greens. The range is enhanced by gorgeous decors and a huge selection of sizes and finishes.



Floor:
2HAC106
Wall:
2HAC104

Elaborate



ABOVE
Floor:
2HAC104



RIGHT
Floor:
2HAC110
Wall:
2HAC108D202



Produce
2HAC101



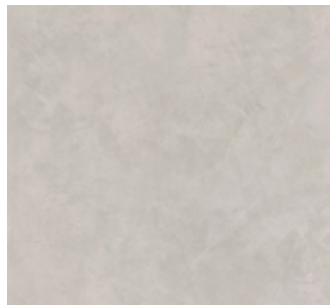
Renovate
2HAC102



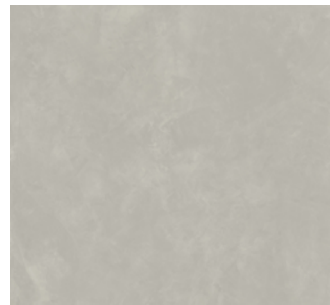
Moonlight
2HAC112



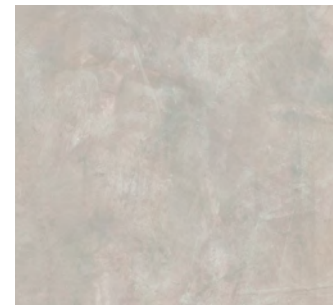
Mango
2HAC120



Lilac
2HAC119



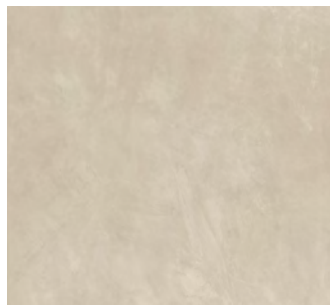
Platinum
2HAC111



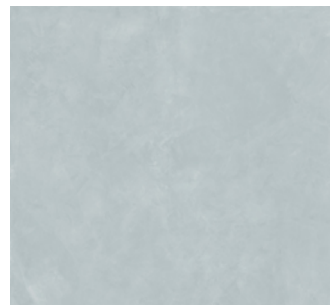
Amplify
2HAC103



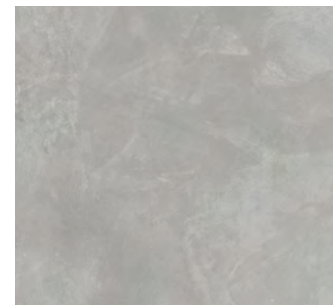
Bedeck
2HAC105



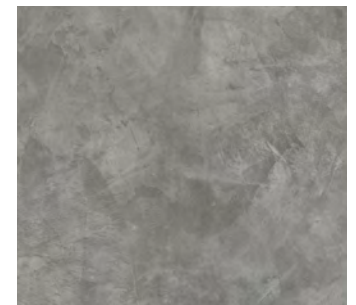
Bone
2HAC113



Lake
2HAC118



Evolved
2HAC104



Specify
2HAC106



Peach
2HAC117



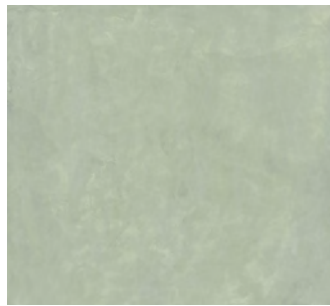
Ginger
2HAC114



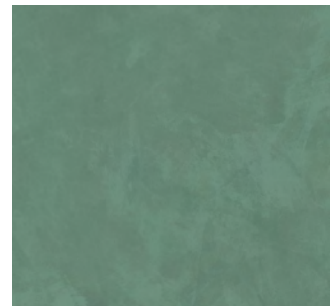
Chocolate
2HAC115



Emblaze
2HAC108



Pine
2HAC116



Garnish
2HAC109



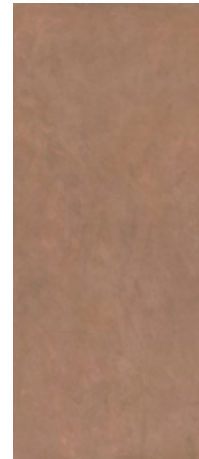
Plush
2HAC110



Enhanced
2HAC107



Floor:
2HAC103
Wall:
2HAC102
2HAC109d305



Emblaze Decor A
2HAC108D101
1195x2780x6mm
Matt



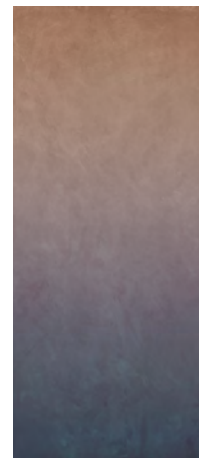
Garnish Decor A
2HAC109D102
1195x2780x6mm
Matt



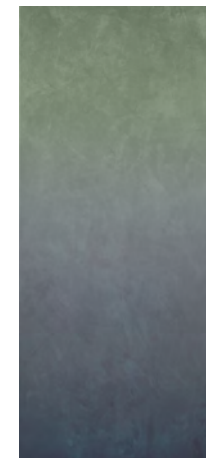
Plush Decor A
2HAC110D103
1195x2780x6mm
Matt



Ornate Decor C
2HAC109D305
1195x2780x6mm
Matt














Emblaze Decor B
2HAC108D202
1195x2780x6mm
Matt



Garnish Decor B
2HAC109D204
1195x2780x6mm
Matt

SIZES AND FINISHES

											
	120x600 9mm	300x600 8mm	300x600 9mm	600x600 9mm	600x600 20mm	600x1200 9mm	800x800 9mm	1200x1200 6mm	1200x1200 9mm	1200x1200 20mm	1200x2780 6mm
Produce	\ \ ♥		\ \ ♥	\ \ ♥	△	\ \ ♥ △	\ \ ♥	◆	\ \ ♥ △	△	●
Renovate	\ \ ♥	♥	\ \ ♥	\ \ ♥	△	\ \ ♥ △	\ \ ♥	◆	\ \ ♥ △	△	●
Moonlight	\ \ ♥		\ \ ♥	\ \ ♥		\ \ ♥ △	\ \ ♥	◆	\ \ ♥ △		●
Mango	\		\	\		\					
Lilac	\		\	\		\					
Platinum	\ \ ♥		\ \ ♥	\ \ ♥		\ \ ♥ △	\ \ ♥		\ \ ♥ △		
Amplify	\ \ ♥	♥	\ \ ♥	\ \ ♥	△	\ \ ♥ △	\ \ ♥	◆	\ \ ♥ △	△	●
Bedeck	\ \ ♥		\ \ ♥	\ \ ♥		\ \ ♥ △	\ \ ♥		\ \ ♥ △		
Evolved	\ \ ♥	♥	\ \ ♥	\ \ ♥	△	\ \ ♥ △	\ \ ♥	◆	\ \ ♥ △	△	●
Bone	\ \ ♥		\ \ ♥	\ \ ♥		\ \ ♥ △	\ \ ♥		\ \ ♥ △		
Lake	\		\	\		\					●
Specify	\ \ ♥		\ \ ♥	\ \ ♥	△				\ \ ♥		
Peach	\		\	\		\					●
Ginger	\ \ ♥		\ \ ♥	\ \ ♥		\ \ ♥ △	\ \ ♥	◆	\ \ ♥ △		●
Chocolate	\ \ ♥		\ \ ♥	\ \ ♥		\ \ ♥			\ \ ♥		
Emblaze	\		\	\		\					
Pine	\		\	\		\					●
Garnish	\		\	\		\					
Plush	\		\	\		\					
Enhanced	\ \ ♥		\ \ ♥	\ \ ♥		\ \ ♥			\ \ ♥		

 Satin
  Matt R9
  Matt R10 (A)
  Matt R10 (A+B)
  Anti Slip R11 (A+B+C)

Elaborate

APPEARANCE

Concrete

MATERIAL

Porcelain

USAGE

Floors and Walls

SHADE VARIATION

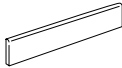
V2 - Light

SPECIAL PIECES

For more information contact our sales team.

BULLNOSE

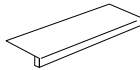
72x600mm



STEP TREAD

330x1200mm

330x600mm



STEP TREAD CORNER

330x330mm



ISO 10545 RESULTS

2. DIMENSIONS AND SURFACE QUALITY

Conforms

3. WATER ABSORPTION

0.1%

4. FLEXURAL STRENGTH

Conforms

6. DEEP ABRASION RESISTANCE

Conforms

8. LINEAR THERMAL EXPANSION

7×10^{-6} °C

9. THERMAL SHOCK RESISTANCE

Conforms

10. MOISTURE EXPANSION

< 0.1 (mm/m)

12. FROST RESISTANCE

Conforms

13. CHEMICAL RESISTANCE

Conforms

14. STAIN RESISTANCE

Conforms

SLIP RESISTANCE (DIN 51130-51097)

Matt R10 (A+B)

Matt R10 (A)

Matt R9

Anti Slip R11 (A+B+C)

MANUFACTURER CERTIFICATIONS:



EPD: Available

ISO 14001

For LEED, BREEAM and WELL information, please ask for details. On request tiles can be tested to BS EN 16165:2021. HSE surface roughness and NCS Colour values are also available upon request.

All sizes shown are nominal. Due to the printing process and differing screen values actual tile colours may vary. E&OE.
© Solus Ceramics Limited 2024. 006.