

Euphoria

11 COLOURS | 2 FINISHES | 2 SIZES | 1 DECOR



LOS
LUS

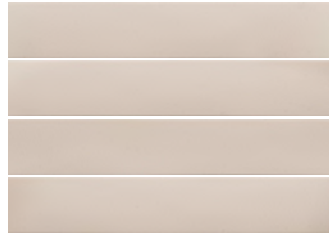
Euphoria

Offering an infinite number of colour combinations, this range promises to transform any monochrome background into a stunning mosaic while a gloss finish creates a scattered inlay of light points and tone-on-tone patterns.

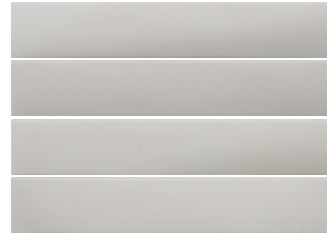




Glee
2YST103



Jubilant
2YST104



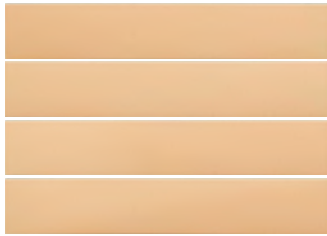
Fervor
2YST102



Inspiration
2YST106



Buzz
2YST109



Happy
2YST101



Uplift
2YST107



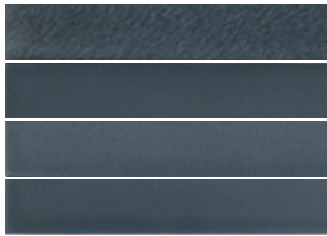
Rhapsody
2YST105



Jollies
2YST110





Delightful
2YST108



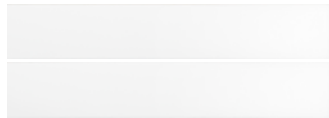
Upbeat
2YST111

SIZES AND FINISHES

		
	60x370 9mm	100x100 8mm
Colours (floors and walls)	●	●
Decors (walls only)	◆	

● Matt R9 ◆ Gloss

DECORS



Joviality
2YST113d103



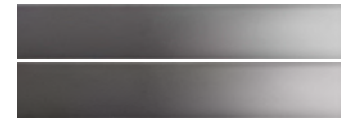
Merriment
2YST114d104



Highspirit
2YST112d102



Exuberance
2YST116d106



Uplifting
2YST119d109



Smiles
2YST111d101



Passion
2YST117d107



Vigor
2YST115d105



Hilarity
2YST120d110



Espirit
2YST118d108



Pleased
2YST111D111

NOTES

To avoid lippage we recommend the use of self-levelling spacers.

APPEARANCE

Mono Colour

MATERIAL

Porcelain

USAGE

Floors and Walls

SHADE VARIATION

V3 - Moderate

ISO 10545 RESULTS**2. DIMENSIONS AND SURFACE QUALITY**

Conforms

3. WATER ABSORPTION

Conforms

4. FLEXURAL STRENGTH

Conforms

6. DEEP ABRASION RESISTANCE

No rating

8. LINEAR THERMAL EXPANSION

No rating

9. THERMAL SHOCK RESISTANCE

Conforms

10. MOISTURE EXPANSION

No rating

12. FROST RESISTANCE

Conforms

13. CHEMICAL RESISTANCE

Conforms

14. STAIN RESISTANCE

Class 5

**SLIP RESISTANCE
(DIN 51130)**

Matt R9

MANUFACTURER CERTIFICATIONS:

EPD: Available

For LEED, BREEAM and WELL information, please ask for details. On request tiles can be tested to BS EN 16165:2021. HSE surface roughness and NCS Colour values are also available upon request. All sizes shown are nominal. Due to the printing process and differing screen values actual tile colours may vary. E&OE. © Solus Ceramics Limited 2023. 004.