

Faculty

6 COLOURS | 1 FINISH | 1 SIZES



SOS
LUS

Floor:
2FLF106
Wall:
2FLF102

Faculty

Made from porcelain, the Faculty range creates an exciting re-interpretation of hand-crafted Victorian wall tiles.



Floor:
2FLF105



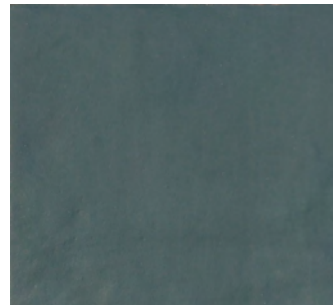
Talent
2FLF101



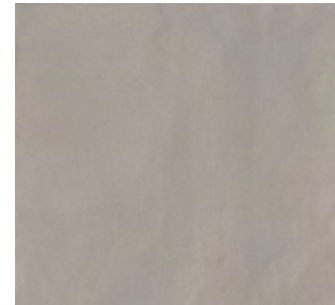
Expertise
2FLF102



Gift
2FLF103



Capability
2FLF104



Facility
2FLF105



Cleverness
2FLF106



Talent
2FLF101



Expertise
2FLF102



Gift
2FLF103



Capability
2FLF104









Facility
2FLF105



Cleverness
2FLF106

SIZES AND FINISHES

■
138x138
8.5mm

 Talent	♥
 Expertise	♥
 Gift	♥
 Capability	♥
 Facility	♥
 Cleverness	♥

♥ Matt R9

NOTES

For complementary wall tiles, see our Faculty Wall range. Please ask for details.

Faculty

APPEARANCE

Mono Colour

MATERIAL

Porcelain

USAGE

Floors and Walls

SHADE VARIATION

V3 - Moderate

ISO 10545 RESULTS

2. DIMENSIONS AND SURFACE QUALITY

Conforms

3. WATER ABSORPTION

< 0.5%

4. FLEXURAL STRENGTH

> 35 N/mm²

6. DEEP ABRASION RESISTANCE

No rating

8. LINEAR THERMAL EXPANSION

No rating

9. THERMAL SHOCK RESISTANCE

Conforms

10. MOISTURE EXPANSION

No rating

12. FROST RESISTANCE

Conforms

13. CHEMICAL RESISTANCE

Conforms

14. STAIN RESISTANCE

Class 5

SLIP RESISTANCE (DIN 51130-51097)

Matt R9

MANUFACTURER CERTIFICATIONS:

ISO 14001

For LEED, BREEAM and WELL information, please ask for details. On request tiles can be tested to BS EN 16165:2021. HSE surface roughness and NCS Colour values are also available upon request. All sizes shown are nominal. Due to the printing process and differing screen values actual tile colours may vary. E&OE. © Solus Ceramics Limited 2023. 002a.