

Faculty Wall

6 COLOURS | 1 FINISH | 1 SIZE



S
O
L
U
S

Wall:
5FLF101

Faculty Wall

Faculty Wall is a range of six porcelain tiles that are supplied in an unglazed format or partially glazed, at quirky angles, creating a unique and distinctive aesthetic.



Wall:
5FLF105

Faculty Wall

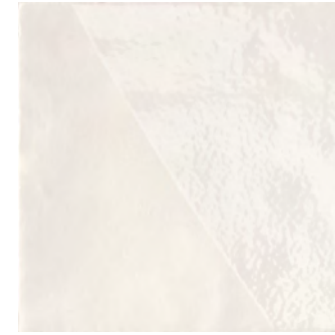


ABOVE
Wall:
5FLF102

RIGHT
Wall:
5FLF103



Faculty Wall



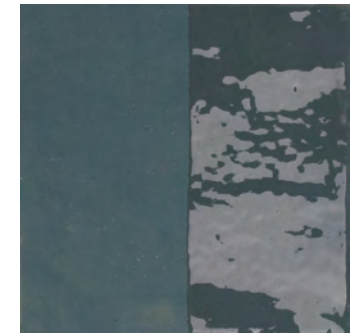
Genius
5FLF101



Skillful
5FLF102



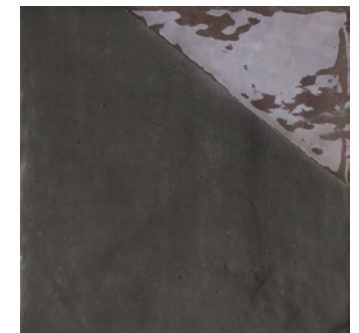
Brilliance
5FLF103



Gifted
5FLF104



Research
5FLF105



Tuition
5FLF106

Faculty Wall

APPEARANCE

Mono Colour

MATERIAL

Porcelain

USAGE

Walls only

SHADE VARIATION

V3 - Moderate

SIZES AND FINISHES

■
138x138
8.5mm

All colours



◆ Matt Gloss Mix

NOTES

For complementary Matt floor and wall tiles, see our Faculty range.
Please ask for details.

ISO 10545 RESULTS

2. DIMENSIONS AND SURFACE QUALITY

Conforms

3. WATER ABSORPTION

< 0.5%

4. FLEXURAL STRENGTH

> 15 N/mm²

6. DEEP ABRASION RESISTANCE

No rating

8. LINEAR THERMAL EXPANSION

No rating

9. THERMAL SHOCK RESISTANCE

Conforms

10. MOISTURE EXPANSION

No rating

12. FROST RESISTANCE

Conforms

13. CHEMICAL RESISTANCE

Conforms

14. STAIN RESISTANCE

Class 5

MANUFACTURER CERTIFICATIONS:

ISO 14001

For LEED, BREEAM and WELL information, please ask for details. NCS Colour values are available upon request.
All sizes shown are nominal. Due to the printing process and differing screen values actual tile colours may vary. E&OE.
© Solus Ceramics Limited 2024. 003.