

Format

10 COLOURS | 3 FINISHES | 14 SIZES | 2 DECORS | 2 MOSAICS



S
O
LUS



Project:
Brunel House
(Featured in Quarter Issue 15)
Photography by Peter Savage

Floor:
2WDR006

Format

Format is an expressive range of concrete tiles that reflect the sights and textures of urban city environments. With excellent anti slip properties, ten shades and fourteen sizes this range provides a total solution.



S
O
LUS



Solus Plus ranges are responsibly sourced in line with the BES 6001 standard.

For more information, [click here](#)

Project:
East 59th

Floor:
2WDR004

Format



ABOVE
Wall:
2WDR001
Floor:
2WDR001
Project:
Peckham Kitchen
Photography by
Agnese Sanvito



ABOVE
Floor:
2WDR002
2WDR002D001



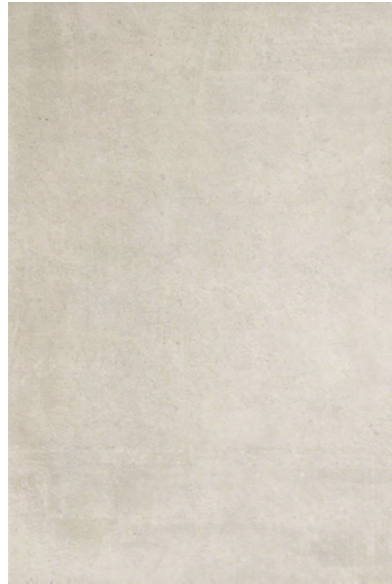
RIGHT
Project:
Brunel House
Photography by
Peter Savage
Floor:
2WDR001



Creamfield
2WDR007



Bodanna
2WDR008



Penzlin
2WDR006



Naila
2WDR005



Passaic
2WDR001



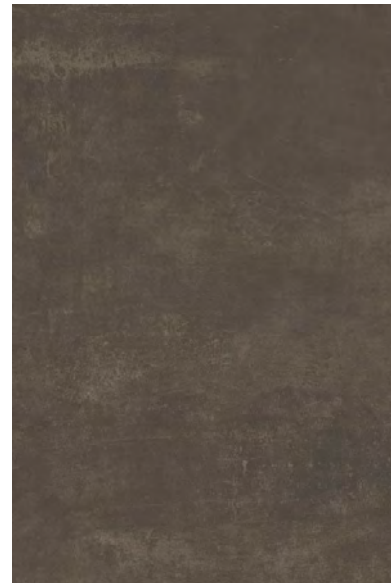
Howell
2WDR002



Morval
2WDR009



Gladbeck
2WDR004



Braddock
2WDR010



Ansbach
2WDR003

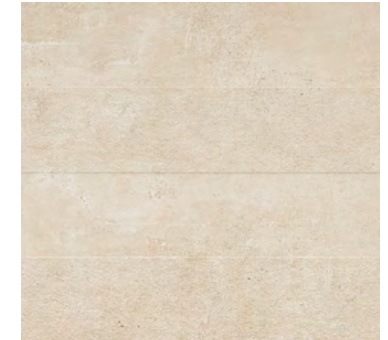


Floor:
2WDR005D001
Wall:
2WDR005D001

DECORS



Decor A
All colours
600x600x8mm
600x1200x8mm
Natural R10 (A+B)



Decor B
All colours
600x1200x8mm
Textured R10 (A+B)

MOSAICS

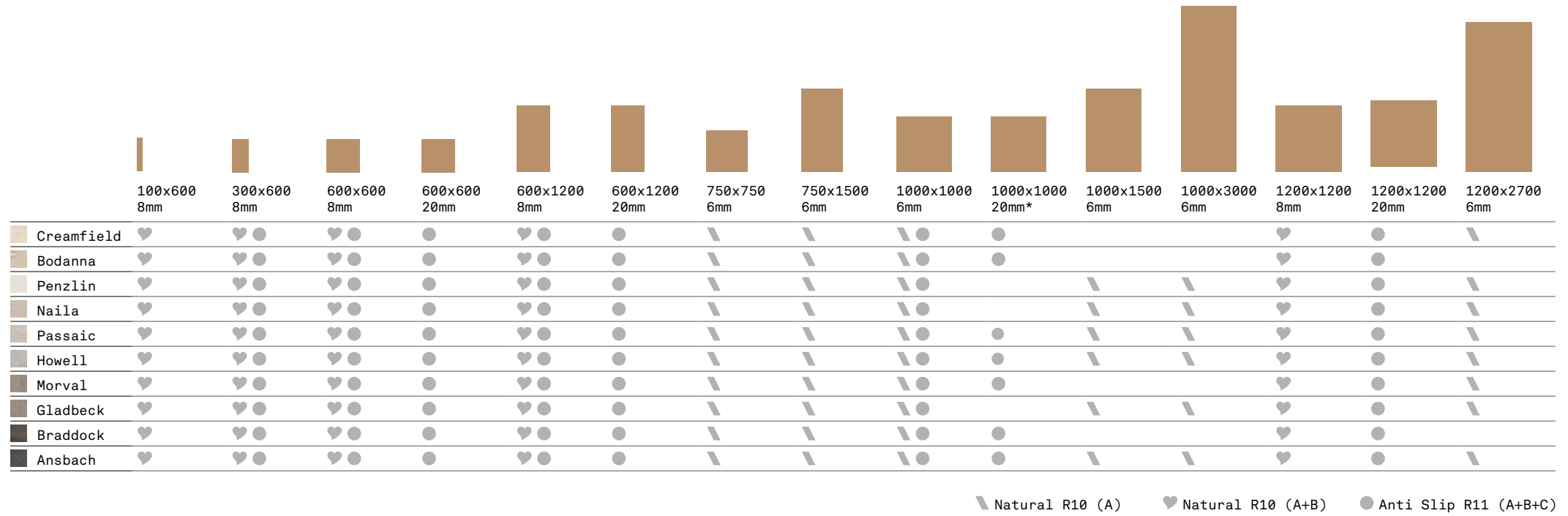


Mosaic A
All colours
300x300x8mm (31x31 chips)
Natural R10 (A+B)



Mosaic B
All colours
300x300x8mm (47x47 chips)
Natural R10 (A+B)

SIZES AND FINISHES



NOTES

* Size produced on request only.

Format

APPEARANCE

Concrete

MATERIAL

Porcelain

USAGE

Floors and Walls

SHADE VARIATION

V3 - Moderate

SPECIAL PIECES

Available in all colours.

For more information contact our sales team.

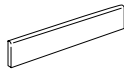
BULLNOSE

70x600x8mm

65x750x6mm

65x1000x6mm

70x1200x8mm

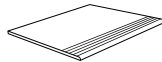


STEP WITH GROOVES**

300x600x8, 300x1000x6,

300x1200x8, 375x750x6,

375x1500x6mm



NOTES

** production on request

ISO 10545 RESULTS

2. DIMENSIONS AND SURFACE QUALITY

Conforms

3. WATER ABSORPTION

$\leq 0.05\%$

4. FLEXURAL STRENGTH

42-48 N/mm²

6. DEEP ABRASION RESISTANCE

140 mm³

8. LINEAR THERMAL EXPANSION

$7 \times 10^{-6} \text{ } ^\circ\text{C}$

9. THERMAL SHOCK RESISTANCE

Conforms

10. MOISTURE EXPANSION

No rating

12. FROST RESISTANCE

Conforms

13. CHEMICAL RESISTANCE

Conforms

14. STAIN RESISTANCE

Class 5

SLIP RESISTANCE (DIN 51130-51097)

Natural R10 (A)

Natural R10 (A+B)

Anti Slip R11 (A+B+C)

CERTIFICATIONS:



Declare.

ecovadis



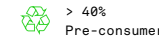
BES 819709

EPD: Available

ISO 14001

SAS0-Approved

For LEED, BREEAM and WELL information, please ask for details. On request tiles can be tested to BS EN 16165:2021. HSE surface roughness and NCS Colour values are also available upon request. All sizes shown are nominal. Due to the printing process and differing screen values actual tile colours may vary. E&OE. © Solus Ceramics Limited 2025. 0014.



Solus Plus ranges are responsibly sourced in line with the BES 6001 standard for the responsible sourcing of construction products.

BIRMINGHAM
Unit 1 Cole River Park
Warwick Road B11 2QX

LONDON
80 Clerkenwell Road
EC1M 5RJ

MANCHESTER
14 Kennedy Street
M2 4BY

solusceramics.com
+44 (0)121 753 0777
sales@solusceramics.com

The logo consists of the word "SOLUS" in a large, white, sans-serif font, stacked vertically. To the right of the middle letter "O" is a green circular icon containing a white plus sign (+).

S
O
LUS

About Solus Plus

Solus Plus is our new mark of assurance for responsibly sourced products. Built on the rigorous standards of BES 6001, it highlights collections produced by factories that demonstrate industry-leading sustainability across their entire supply chain, from raw material extraction to final delivery.

When specified through Solus, these products can contribute valuable credits toward BREEAM, LEED and WELL certification, helping you meet your environmental targets without compromising on quality or design. Look for the Solus Plus symbol to specify with confidence.

[Visit our website to learn more.](#)

[Back to top](#)