

# Illustrate

54 COLOURS | 1 FINISH | 2 SIZES



S  
O  
L  
U  
S

Floor:  
2MOE001  
2MOE002  
2MOE003  
2MOE007

# Illustrate

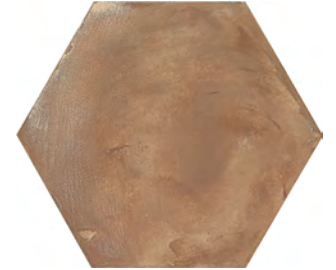
Illustrate is a range that encompasses both floor and wall tiles in a variety of chalky, neutral shades. Including simple squares and intricate hexagons the range provides many options for designers.



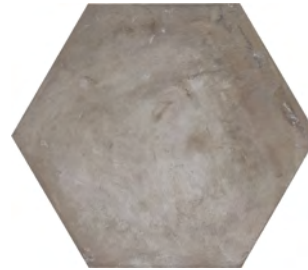




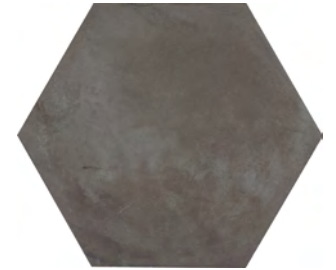
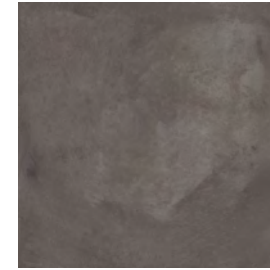
Beckily  
2MOE002



Lakora  
2MOE003



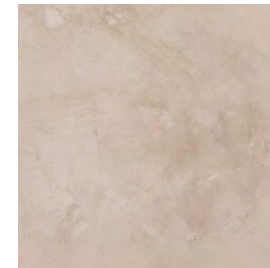
Manja  
2MOE005



Soala  
2MOE006



Ambala  
2MOE001



Fandri  
2MOE004



Leganes  
2MOE007



Plana  
2MOE008



Abacete  
2MOE009



Lleida  
2MOE013



Asturius  
2MOE014



Ecija  
2MOE015



Getaf  
2MOE010



Salamanca  
2MOE011



Longrono  
2MOE012



Jumilla  
2MOE016



Cuenca  
2MOE017



Moratall  
2MOE018



Valencia  
2MOE019



Murcia  
2MOE020



Palma  
2MOE021



Ciudale  
2MOE054



Vitona  
2MOE026



Eliche  
2MOE027



Alicante  
2MOE022



Cordoba  
2MOE023



Vallad  
2MOE024



Oviedo  
2MOE028



Badalon  
2MOE029



Sabadell  
2MOE030



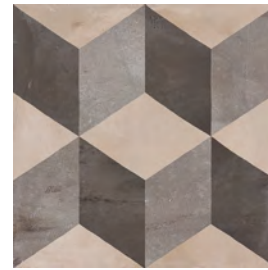
Tineo  
2MOE031



Baza  
2MOE032



Osuna  
2MOE033



Nisar  
2MOE037



Alia  
2MOE038



Montoro  
2MOE039



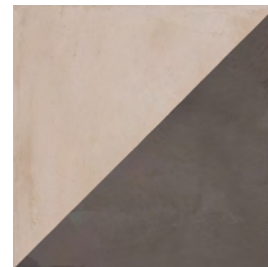
Hellin  
2MOE034



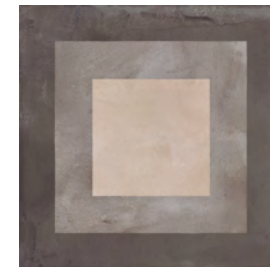
Utera  
2MOE035



Merida  
2MOE036



Requina  
2MOE040



Tervel  
2MOE041



Almeria  
2MOE042



Biscay  
2MOE043



Navarre  
2MOE044



Toledo  
2MOE045



Segovia  
2MOE049



Burgos  
2MOE050



Las Palmas  
2MOE051



Jaen  
2MOE046



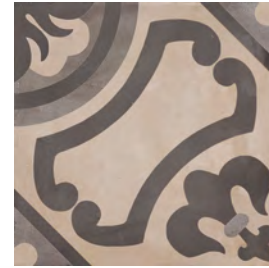
Marakesh  
2MOE047



Huelvan  
2MOE048



Gipuzkoa  
2MOE052



Tenerife  
2MOE053



Gijon  
2MOE025



Floor:  
2MOE028

## SIZES AND FINISHES

	200x200 9mm	216x250 9mm
Ambala	♥	♥
Beckily	♥	♥
Lakora	♥	♥
Fandri	♥	♥
Manja	♥	♥
Soala	♥	♥

♥ Natural R9

## NOTES

Decors are also available in a random mix.  
Please ask for details.



**APPEARANCE**  
Concrete

**MATERIAL**  
Porcelain

**USAGE**  
Floors and Walls

**SHADE VARIATION**  
V3 - Moderate

**SPECIAL PIECES**  
Available in all colours.  
For more information contact our sales team.

**BATTISCOPIA**  
47x200mm



## ISO 10545 RESULTS

**2. DIMENSIONS AND SURFACE QUALITY**  
Conforms

**3. WATER ABSORPTION**  
< 0.1%

**4. FLEXURAL STRENGTH**  
≥ 45 n/mm<sup>2</sup>

**6. DEEP ABRASION RESISTANCE**  
≤ 150mm<sup>3</sup>

**8. LINEAR THERMAL EXPANSION**  
≤ 7 (RK)<sup>-1</sup>

**9. THERMAL SHOCK RESISTANCE**  
Conforms

**10. MOISTURE EXPANSION**  
No rating

**12. FROST RESISTANCE**  
Conforms

**13. CHEMICAL RESISTANCE**  
Conforms

**14. STAIN RESISTANCE**  
Conforms

**SLIP RESISTANCE  
(DIN 51130-51097)**  
Natural R9

## MANUFACTURER CERTIFICATIONS:



EPD: Available

ISO 17889-1

For LEED, BREEAM and WELL information, please ask for details. On request tiles can be tested to BS EN 16165:2021. HSE surface roughness and NCS Colour values are also available upon request. All sizes shown are nominal. Due to the printing process and differing screen values actual tile colours may vary. E&OE. © Solus Ceramics Limited 2023. 010b.



> 20%  
Pre-consumer