

Lento

8 COLOURS | 4 FINISHES | 6 SIZES | 1 MOSAIC | 1 DECOR



S
LUS



Floor:
2LET105
Wall:
2LET106
2LET106M001
2LET105D001

Lento

A technical stone range designed for high-traffic architectural projects. Produced with reduced water, energy, and emissions, it combines strength with sustainability. This range is certified Carbon Zero.



S
O
L
U
S 

Solus Plus ranges are responsibly sourced in line with the BES 6001 standard.

For more information, [click here](#)

Floor:
2LET106

Lento



ABOVE
Floor:
2LET103
Wall:
2LET103

RIGHT
Floor:
2LET105



ABOVE
Floor:
2LET105
Wall:
2LET105D001



LET-Bone
2LET101



LET-Beige
2LET105



LET-Mocha
2LET106



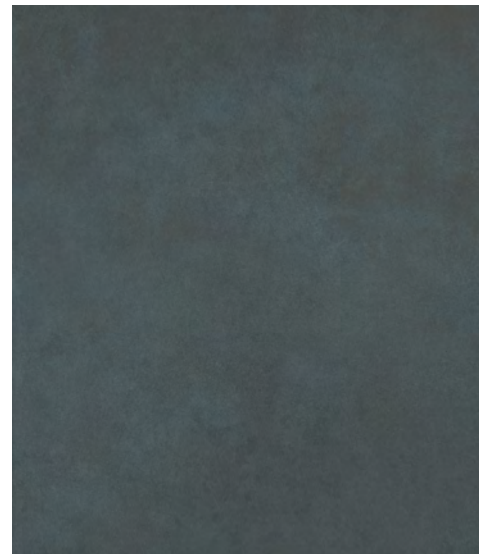
LET-Grey
2LET102



LET-Camel
2LET108



LET-Brown
2LET107



LET-Blue
2LET104



LET-Dark
2LET103



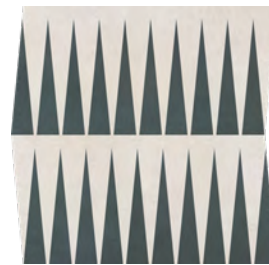
Wall:
2LET106
2LET106M001

SIZES AND FINISHES

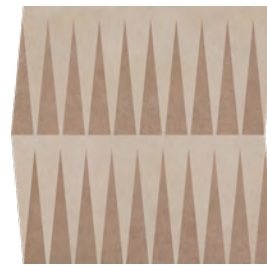
	300x600 9mm	600x600 9mm	600x1200 9mm	600x1200 20mm	800x800 9mm	1200x1200 9mm
LET-Bone	● \ △	● \ △	● \	▲	● \	● \
LET-Beige	● \ △	● \ △	● \	▲	● \	● \
LET-Mocha	● \ △	● \ △	● \	▲	● \	● \
LET-Grey	● \ △	● \ △	● \	▲	● \	● \
LET-Camel	● \ △	● \ △	● \	▲	● \	● \
LET-Brown	● \ △	● \ △	● \		\	\
LET-Blue	● \ △	● \ △	● \		\	\
LET-Dark	● \ △	● \ △	● \		\	\

● Matt R10 (A+B) \ Satin R9 △ Anti Slip R11 ▲ Anti Slip R11 (A+B+C)

MOSAICS



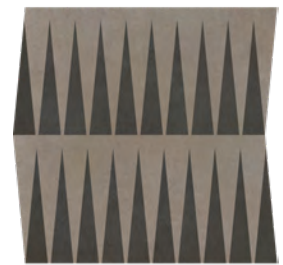
LET-Bone Mix Mosaic
2LET101M001
300x310x9mm
Satin R9



LET-Beige Mix Mosaic
2LET105M001
300x310x9mm
Satin R9



LET-Mocha Mix Mosaic
2LET106M001
300x310x9mm
Satin R9



LET-Grey Mix Mosaic
2LET102M001
300x310x9mm
Satin R9



Wall:
2LET104D001

DECOR



Decor

Available in all colours

Satin R9 - 75x300x9m

Matt R10 (A+B) - 100x600x9mm

APPEARANCE

Concrete

MATERIAL

Porcelain

USAGE

Floors and Walls

SHADE VARIATION

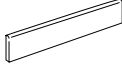
V2 - Light

SPECIAL PIECES

For more information contact our sales team.

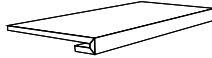
BATTISCOPIA

46x1200mm



GRADINO

330x1200x30mm



ISO 10545 RESULTS

2. DIMENSIONS AND SURFACE QUALITY

Conforms

3. WATER ABSORPTION

$\leq 0.08\%$

4. FLEXURAL STRENGTH

50-52 N/mm²

6. DEEP ABRASION RESISTANCE

140 mm³

8. LINEAR THERMAL EXPANSION

No rating

9. THERMAL SHOCK RESISTANCE

Conforms

10. MOISTURE EXPANSION

No rating

12. FROST RESISTANCE

Conforms

13. CHEMICAL RESISTANCE

Conforms

14. STAIN RESISTANCE

Class 4

SLIP RESISTANCE (DIN 51130-51097)

Matt R10 (A+B)

Satin R9

Anti Slip R11

Anti Slip R11 (A+B+C)

CERTIFICATIONS:



EPD: Available

ISO 14001

SASO-Approved

For LEED, BREEAM and WELL information, please ask for details. On request tiles can be tested to BS EN 16165:2021. HSE surface roughness and NCS Colour values are also available upon request. All sizes shown are nominal. Due to the printing process and differing screen values actual tile colours may vary. E&OE. © Solus Ceramics Limited 2025. 001.

The logo consists of the word "SOLUS" in a large, white, sans-serif font, stacked vertically. To the right of the middle "O" is a green circular icon containing a white plus sign (+). The background of the entire page is a photograph of a large industrial storage yard filled with mounds of brown earth and gravel, with a vertical metal post in the center.

S
O
LUS

About Solus Plus

Solus Plus is our new mark of assurance for responsibly sourced products. Built on the rigorous standards of BES 6001, it highlights collections produced by factories that demonstrate industry-leading sustainability across their entire supply chain, from raw material extraction to final delivery.

When specified through Solus, these products can contribute valuable credits toward BREEAM, LEED and WELL certification, helping you meet your environmental targets without compromising on quality or design. Look for the Solus Plus symbol to specify with confidence.

[Visit our website to learn more.](#)

[Back to top](#)