

Metallico Wall

5 COLOURS | 1 FINISH | 1 SIZE



S
LUS

Wall:
5FTJ104

Metallico Wall

A vibrant range of brick shaped wall tiles featuring rusty edges and an undulating gloss finish.



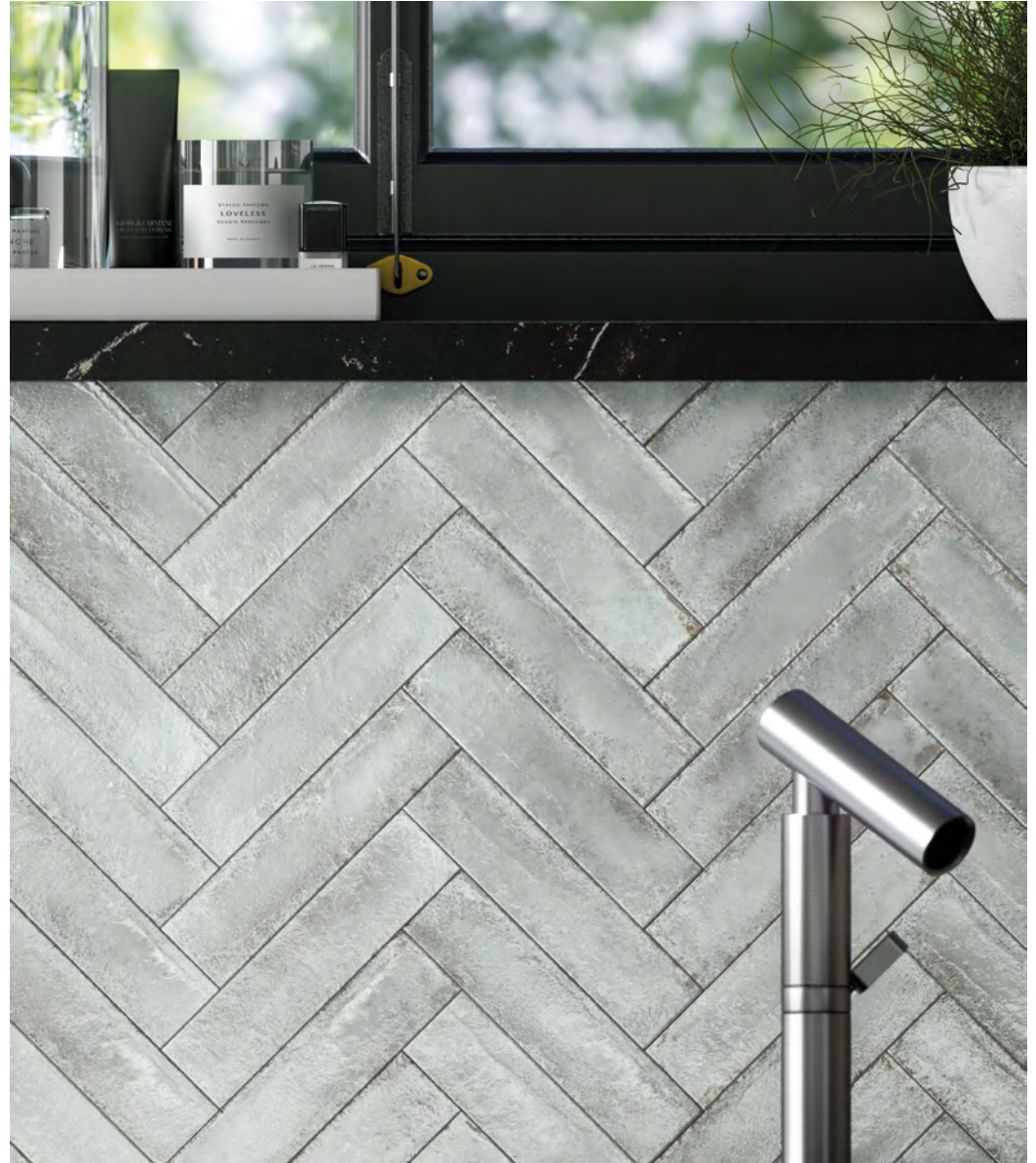
Wall:
5FTJ101

Metallico Wall

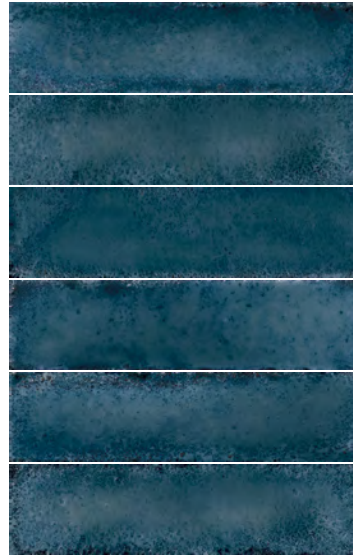


ABOVE
Wall:
5FTJ101

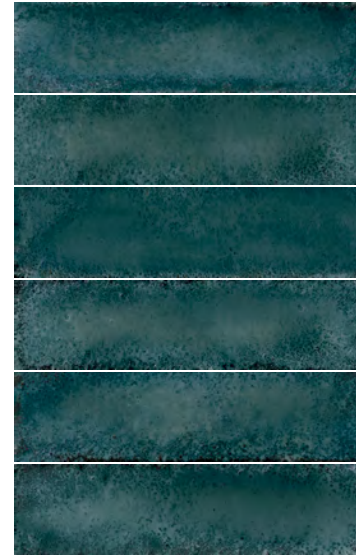
RIGHT
Wall:
5FTJ102



ABOVE
Wall:
5FTJ102



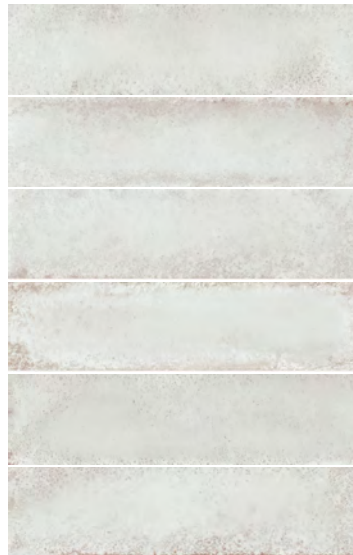
Astonish
5FTJ103



Glitter
5FTJ104



Fascinate
5FTJ105



Stunning
5FTJ101



Hypnotize
5FTJ102

Metallico Wall

APPEARANCE

Metallic

MATERIAL

Porcelain

USAGE

Walls only

SHADE VARIATION

V3 - Moderate

SIZES AND FINISHES

60x240
9.5mm

All colours

◆ Gloss

NOTES

To avoid lippage we recommend the use of self-levelling spacers.

For complementary floor and wall tiles, see our Metallico range.

ISO 10545 RESULTS

2. DIMENSIONS AND SURFACE QUALITY

Conforms

3. WATER ABSORPTION

Conforms

4. FLEXURAL STRENGTH

≥ 45 N/mm²

6. DEEP ABRASION RESISTANCE

No rating

8. LINEAR THERMAL EXPANSION

No rating

9. THERMAL SHOCK RESISTANCE

No rating

10. MOISTURE EXPANSION

No rating

12. FROST RESISTANCE

Conforms

13. CHEMICAL RESISTANCE

Conforms

14. STAIN RESISTANCE

Conforms

MANUFACTURER CERTIFICATIONS:

EPD: Available

ISO 14001

For LEED, BREEAM and WELL information, please ask for details. NCS Colour values are available upon request. All sizes shown are nominal. Due to the printing process and differing screen values actual tile colours may vary. E&OE. © Solus Ceramics Limited 2023. 003.