

# Oceania

23 COLOURS | 2 FINISHES | 1 SIZE



SOLUS

Wall:  
6HHM120

# Oceania

Themed around a palette of ocean inspired tones, this mosaic range consists of 14 plain colours and various mixes. Imprinted with a trio of innovative textures, Oceana is a tactile solution for both walls and floors.



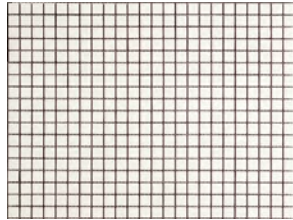
Shower wall:  
6HMM115



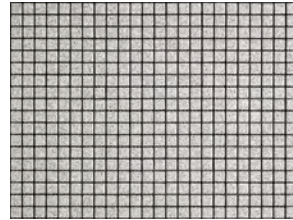
ABOVE  
Wall:  
6HMM123

RIGHT  
Wall:  
6HMM119

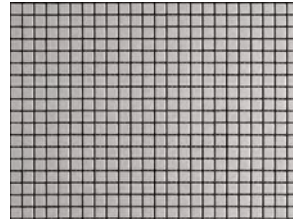




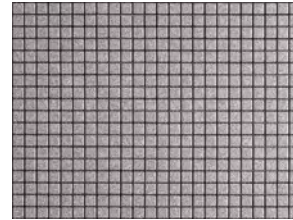
Tonga \*  
6HHM101



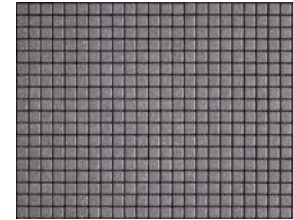
Bonin  
6HHM104



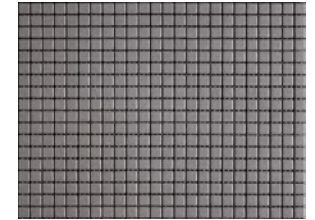
Papua \*  
6HHM102



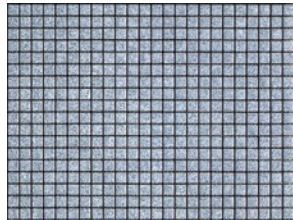
Polynesia  
6HHM105



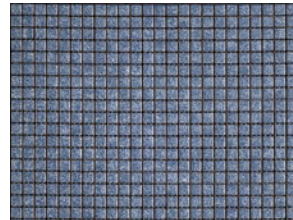
Tamibar  
6HHM106



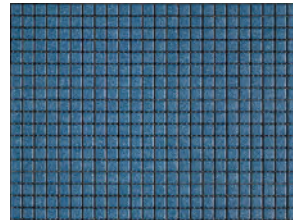
Jaya \*  
6HHM103



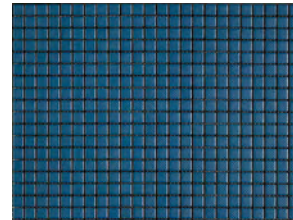
Melanesia  
6HHM108



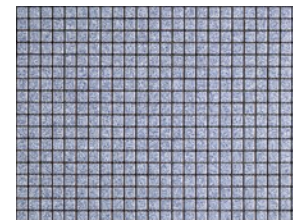
Caledonia  
6HHM109



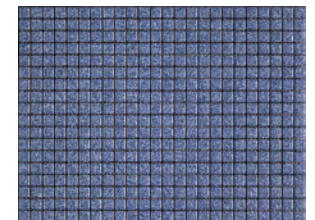
Guam  
6HHM110



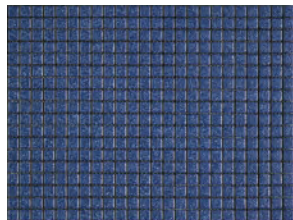
Fiji \*  
6HHM107



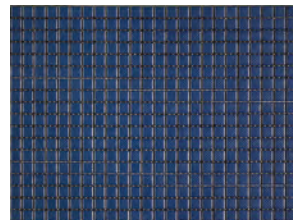
Niue  
6HHM112



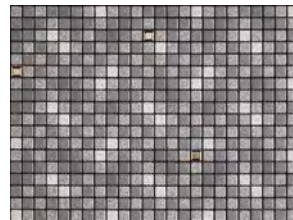
Tokelau  
6HHM113



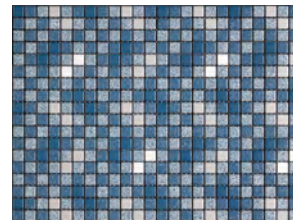
Pitcairn  
6HHM114



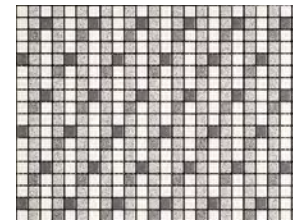
Tavalu \*  
6HHM111



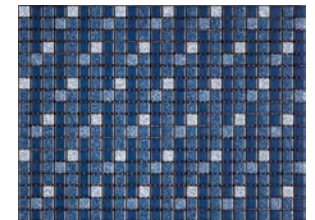
Samoa  
6HHM115



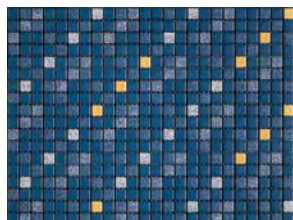
Vanuatu  
6HHM116



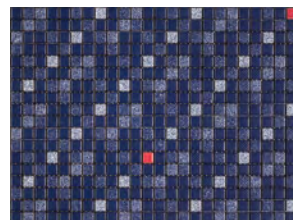
Nauru  
6HHM117



Tahitan  
6HHM118



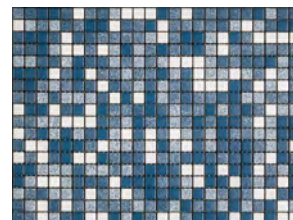
Kiribati  
6HHM119



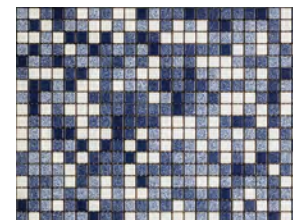
Micronesia  
6HHM120



Lapita  
6HHM121



Saipan  
6HHM122



Gomez  
6HHM123



Wall:  
6HMM118

## SIZES AND FINISHES

■  
12x12  
7mm

All colours

● △

● Matt R9 (A+B)    △ Anti Slip R11 (A+B+C) \*

## NOTES

\* Anti Slip R11 (A+B+C) is only available in selected colours.

Mosaics are supplied on 300x300mm mesh sheets.

Bespoke mixes are available. Please ask for details.

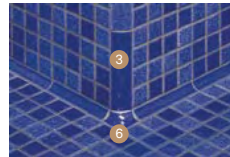
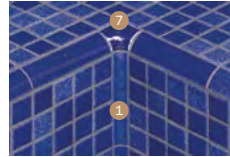
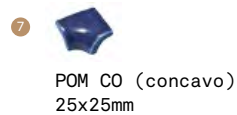
**APPEARANCE**  
Mosaic

**MATERIAL**  
Porcelain

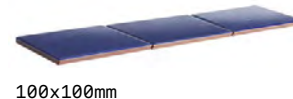
**USAGE**  
Floors and Walls

**SHADE VARIATION**  
V1 - Uniform

## SPECIAL PIECES



## SINGLE PRESS-FIRING JOLLY



All special pieces and single press-firing jolly's are available on special request only.  
Please ask for more details.

## ISO 10545 RESULTS

**2. DIMENSIONS AND SURFACE QUALITY**  
Conforms

**3. WATER ABSORPTION**  
< 1%

**4. FLEXURAL STRENGTH**  
> 50 N/mm<sup>2</sup>

**6. DEEP ABRASION RESISTANCE**  
No rating

**8. LINEAR THERMAL EXPANSION**  
7x10<sup>-6</sup> °C

**9. THERMAL SHOCK RESISTANCE**  
Conforms

**10. MOISTURE EXPANSION**  
< 0.04%

**12. FROST RESISTANCE**  
Conforms

**13. CHEMICAL RESISTANCE**  
Conforms

**14. STAIN RESISTANCE**  
Class 5

**SLIP RESISTANCE**  
**(DIN 51130-51097)**  
Matt R9 (A+B)  
Anti Slip R11 (A+B+C)

## MANUFACTURER CERTIFICATIONS:

EPD: Available

For LEED, BREEAM and WELL information, please ask for details. On request tiles can be tested to BS EN 16165:2021. HSE surface roughness and NCS Colour values are also available upon request.  
All sizes shown are nominal. Due to the printing process and differing screen values actual tile colours may vary. E&OE.  
© Solus Ceramics Limited 2023. 002a.