

Particulate

10 COLOURS | 2 FINISHES | 2 SIZES



300
LUS



Floor:
2MDK107
Wall:
2MDK108

Particulate

Particulate is a terrazzo range boasting five shades, each with small and medium sized chip sizes, reproduced perfectly in porcelain.



S
O
LUS 

Solus Plus ranges are responsibly sourced in line with the BES 6001 standard.

For more information, [click here](#)

Floor:
2MDK103
Wall:
2MDK101
Desk:
2MDK104

Particulate



ABOVE
Floor:
2MDK107

RIGHT
Floor:
2MDK107



Particulate



Guilden
2MDK101



Henbury
2MDK103



Littleton
2MDK105



Kerridge
2MDK107



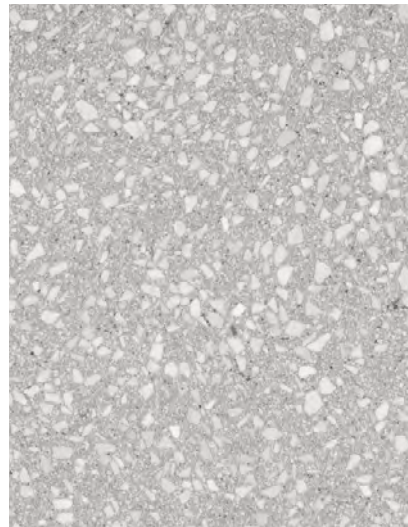
Faylem
2MDK109



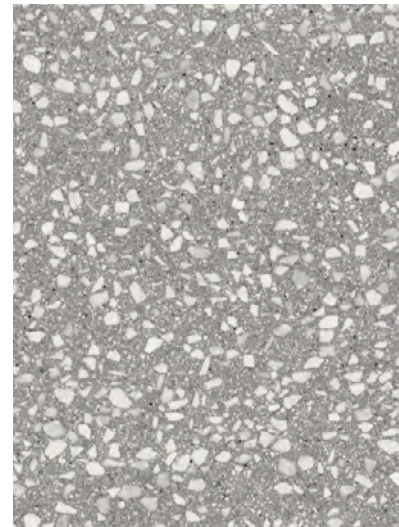
Ettiley
2MDK102



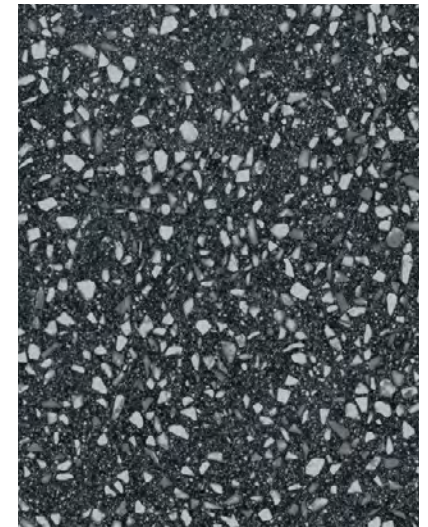
Broxton
2MDK104



Alsager
2MDK106



Farndon
2MDK108



Striven
2MDK110



Floor:
2MDK109

SIZES AND FINISHES

	600x600 9mm	600x1200 9mm
Guilden	♥ ●	
Henbury	♥ ●	
Littleton	♥ ●	
Kerridge	♥ ●	
Faylem	♥ ●	
Ettiley	♥ ●	●
Broxton	♥ ●	●
Alsager	♥ ●	
Farndon	♥ ●	
Striven	♥ ●	

♥ Matt ● Matt R10

Particulate

APPEARANCE

Terrazzo

MATERIAL

Porcelain

USAGE

Floors and Walls

SHADE VARIATION

V2 - Light

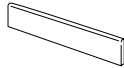
SPECIAL PIECES

Available in all colours.

For more information contact our sales team.

BATTISCOPIA

70x600mm



ISO 10545 RESULTS

2. DIMENSIONS AND SURFACE QUALITY

Conforms

3. WATER ABSORPTION

0.2%

4. FLEXURAL STRENGTH

Conforms

6. DEEP ABRASION RESISTANCE

Conforms

8. LINEAR THERMAL EXPANSION

< 7 MK⁻¹

9. THERMAL SHOCK RESISTANCE

Conforms

10. MOISTURE EXPANSION

< 0.01 % (0.1 (mm/m))

12. FROST RESISTANCE

Conforms

13. CHEMICAL RESISTANCE

Conforms

14. STAIN RESISTANCE

GL>3

SLIP RESISTANCE

(DIN 51130)

Matt R10

CERTIFICATIONS:

Declare.



EPD: Available
ISO 14001
ISO 17889-1
SASO-Approved

For LEED, BREEAM and WELL information, please ask for details. On request tiles can be tested to BS EN 16165:2021. HSE surface roughness and NCS Colour values are also available upon request. All sizes shown are nominal. Due to the printing process and differing screen values actual tile colours may vary. E&OE. © Solus Ceramics Limited 2025. 007.

> 20%
Pre-consumer



Solus Plus ranges are responsibly sourced in line with the BES 6001 standard for the responsible sourcing of construction products.

BIRMINGHAM
Unit 1 Cole River Park
Warwick Road B11 2QX

LONDON
80 Clerkenwell Road
EC1M 5RJ

MANCHESTER
14 Kennedy Street
M2 4BY

solusceramics.com
+44 (0)121 753 0777
sales@solusceramics.com

The logo consists of the word "SOLUS" in a large, white, sans-serif font, stacked vertically. To the right of the word "SOLUS" is a green circular icon containing a white plus sign (+). The background of the entire page is a photograph of a large industrial storage yard filled with mounds of brown earth and gravel, with a vertical metal post in the center.

SOLUS

About Solus Plus

Solus Plus is our new mark of assurance for responsibly sourced products. Built on the rigorous standards of BES 6001, it highlights collections produced by factories that demonstrate industry-leading sustainability across their entire supply chain, from raw material extraction to final delivery.

When specified through Solus, these products can contribute valuable credits toward BREEAM, LEED and WELL certification, helping you meet your environmental targets without compromising on quality or design. Look for the Solus Plus symbol to specify with confidence.

[Visit our website to learn more.](#)

[Back to top](#)