

Porcelain Flare

9 COLOURS | 8 FINISHES | 6 SIZES



S
+
LUS

Floor:
2SCT3081

Porcelain Flare

The extensive Porcelain Flare collection comes in a range of many colours. From deep greys to sumptuous pine to soft sand shades, these ever-popular tiles are synonymous with reliability and quality.



S
O
LUS



Solus Plus ranges are responsibly sourced in line with the BES 6001 standard.

For more information, [click here](#)

Floor:
2SCT3081



Nebulosa
2SCT3081



Scale
2SCT2047



Rostrata
2SCT2043



Ularia
2SCT3093



Sabella
2SCT2048



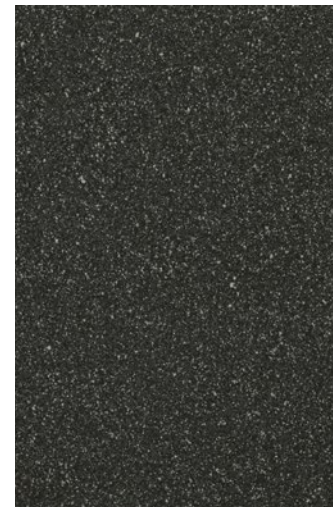
Nereis
2SCT3088



Actina
2SCT3085



Canuk
2SCT3086



Obelia
2SCT3083

SIZES AND FINISHES

	200x200 8mm	200x200 12mm	200x200 14mm	300x300 8mm	300x300 11.2mm	300x300 14mm
Nebulosa	●■□▲⊙\♥♡	●■□▲⊙\♥♡	●■□▲⊙\♥♡	●\♥♡	●\♥♡	●\♥♡
Scale	●			●		
Rostrata	●			●		
Ularia	●			●		
Sabella	●			●		
Nereis	●			●		
Actina	●■□▲⊙\♥♡	●■□▲⊙\♥♡	●■□▲⊙\♥♡	●\♥♡	●\♥♡	●\♥♡
Canuk	●■□▲⊙\♥♡	●■□▲⊙\♥♡	●■□▲⊙\♥♡	●\♥♡	●\♥♡	●\♥♡
Obelia	●			●		

● Matt R9 ■ Anti Slip R12 (A+B+C) V8 □ Anti Slip R12 (A+B+C) V4 ▲ Anti Slip R11 (A+B+C) V6 ⊙ Anti Slip R11 (A+B+C) V4
 \ Anti Slip Textured R11 (A+B) ♥ Anti Slip R11 (A+B) ♡ Anti Slip R10

FINISHES



Matt R9



Anti Slip R12
(A+B+C) V8



Anti Slip R12
(A+B+C) V4



Anti Slip R11
(A+B+C) V6



Anti Slip R11
(A+B+C) V4



Anti Slip Textured
R11 (A+B)



Anti Slip R11 (A+B)



Anti Slip R10

Porcelain Flare

APPEARANCE
Speckled

MATERIAL
Porcelain

USAGE
Floors and Walls

SHADE VARIATION
V1 - Uniform

SPECIAL PIECES
Available in all colours.
For more information contact our sales team.

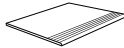
BATTISCOPIA
90x300mm
100x200mm



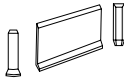
LISTELLO
90x300mm



STEP TREADS
300x300mm



SIT-ON SKIRTING
100x200mm



A5 S5
25x200mm



ISO 10545 RESULTS

2. DIMENSIONS AND SURFACE QUALITY
Conforms

3. WATER ABSORPTION
 $\leq 0.1\%$

4. FLEXURAL STRENGTH
45-60 N/mm²

6. DEEP ABRASION RESISTANCE
Conforms

8. LINEAR THERMAL EXPANSION
 $6.3 \times 10^{-6} \text{ } ^\circ\text{C}$

9. THERMAL SHOCK RESISTANCE
No rating

10. MOISTURE EXPANSION
No rating

12. FROST RESISTANCE
Conforms

13. CHEMICAL RESISTANCE
Conforms

14. STAIN RESISTANCE
Conforms

SLIP RESISTANCE (DIN 51130)
Matt R9
Anti Slip R12 (A+B+C) V8
Anti Slip R12 (A+B+C) V4
Anti Slip R11 (A+B+C) V6
Anti Slip R11 (A+B+C) V4
Anti Slip Textured R11 (A+B)
Anti Slip R11 (A+B)
Anti Slip R10

CERTIFICATIONS:



BES 819709

EPD: Available
ISO 14001
SASO-Approved

For LEED, BREEAM and WELL information, please ask for details. On request tiles can be tested to BS EN 16165:2021. HSE surface roughness and NCS Colour values are also available upon request. All sizes shown are nominal. Due to the printing process and differing screen values actual tile colours may vary. E&OE. © Solus Ceramics Limited 2025. 017.

up to 27%
Pre-consumer



Solus Plus ranges are responsibly sourced in line with the BES 6001 standard for the responsible sourcing of construction products.

BIRMINGHAM
Unit 1 Cole River Park
Warwick Road B11 2QX

LONDON
80 Clerkenwell Road
EC1M 5RJ

MANCHESTER
14 Kennedy Street
M2 4BY

solusceramics.com
+44 (0)121 753 0777
sales@solusceramics.com

The logo for Solus Plus is displayed in white, bold, sans-serif capital letters. The word 'SOLUS' is stacked vertically, with 'S' on top, 'O' in the middle, and 'LUS' at the bottom. To the right of the 'O' is a green circular icon containing a white plus sign (+). The background of the entire page is a photograph of large mounds of brown sand or gravel in an industrial setting, with a vertical metal beam in the center.

SOLUS

About Solus Plus

Solus Plus is our new mark of assurance for responsibly sourced products. Built on the rigorous standards of BES 6001, it highlights collections produced by factories that demonstrate industry-leading sustainability across their entire supply chain, from raw material extraction to final delivery.

When specified through Solus, these products can contribute valuable credits toward BREEAM, LEED and WELL certification, helping you meet your environmental targets without compromising on quality or design. Look for the Solus Plus symbol to specify with confidence.

[Visit our website to learn more.](#)

[Back to top](#)