

30 COLOURS | 6 FINISHES | 5 SIZES | 1 MOSAIC

Program

SOS
LUS



Floor:
2TBT855
2TBT859
2TBT852

Program

The Program range offers an array of plain and granite effect porcelain tiles that can be used in the most demanding of situations. From WC's, to swimming pools and to workshops - the different sizes, special pieces and colours from this range can be used together in harmony.



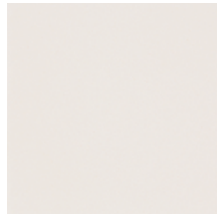
Project: GBK - Covent Garden

Floor:
2TBT855
2TBT857
2TBT869



Project: Ask Italian
(Beckenham)

Floor:
2TBT855
2TBT853



Arun
2TBT855



Lampard
2TBT840



Gunner
2TBT845



Atkins
2TBT844



Audrey
2TBT858



Argyll
2TBT842



Alhambra
2TBT864



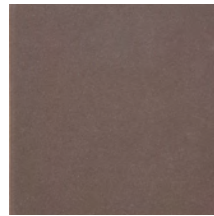
Turkish
2TBT860



Auckland
2TBT843



Damson
2TBT859



Avenue
2TBT868



Ainsworth
2TBT857



Arnold
2TBT867



Armour
2TBT852



Armada
2TBT866



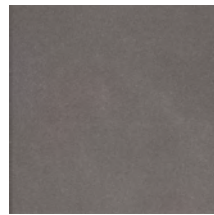
Azalia
2TBT850



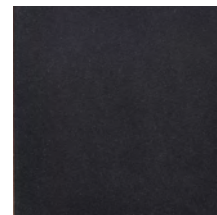
Asher
2TBT846



Aberdeen
2TBT854



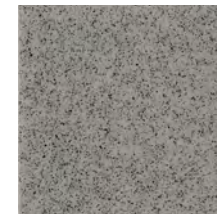
Infer
2TBT869



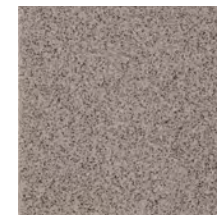
Martin
2TBT853



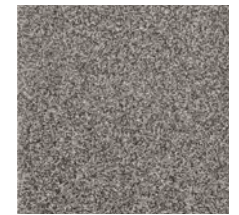
January
2TBT865



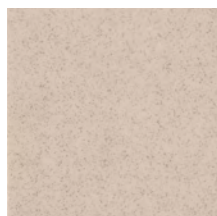
October
2TBT841



December
2TBT848



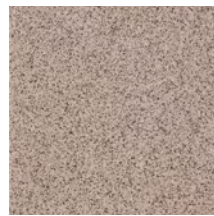
China
2TBT863



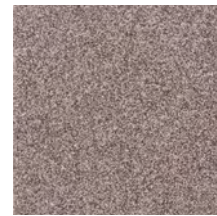
July
2TBT856



Australia
2TBT862



November
2TBT847



Munich
2TBT849



February
2TBT851



September
2TBT861

SIZES AND FINISHES

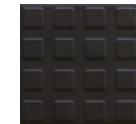
	75x150 8mm	100x100 8mm	100x115 8mm	100x300 8mm	150x150 8mm
Arun	♥	⊙ ● ■ △ \	⊙	⊙	⊙ ● ■ △ \
Lampard	♥	⊙ ● ■ △ \	⊙	⊙	⊙ ● ■ △ \
Gunner	♥	⊙ ● ■ △ \	⊙	⊙	⊙ ● ■ △ \
Atkins		⊙ ● ■ △ \	⊙		⊙ ● ■ △ \
Audrey	♥	⊙ ● ■ △ \	⊙	⊙	⊙ ● ■ △ \
Argyl	♥	⊙ ● ■ △ \	⊙	⊙	⊙ ● ■ △ \
Alhambra		⊙ ● ■ △ \			⊙ ● ■ △ \
Turkish	♥	⊙ ● ■ △ \	⊙	⊙	⊙ ● ■ △ \
Auckland	♥	⊙ ● ■ △ \	⊙	⊙	⊙ ● ■ △ \
Damson	♥	⊙ ● ■ △ \	⊙	⊙	⊙ ● ■ △ \
Avenue	♥	⊙ ● ■ △ \	⊙	⊙	⊙ ● ■ △ \
Ainsworth	♥	⊙ ● ■ △ \	⊙	⊙	⊙ ● ■ △ \
Arnold	♥	⊙ ● ■ △ \	⊙	⊙	⊙ ● ■ △ \
Armour	♥	⊙ ● ■ △ \	⊙	⊙	⊙ ● ■ △ \
Armada		⊙ ● ■ △ \			⊙ ● ■ △ \
Azalia	♥	⊙ ● ■ △ \	⊙	⊙	⊙ ● ■ △ \
Asher	♥	⊙ ● ■ △ \	⊙	⊙	⊙ ● ■ △ \
Aberdeen	♥	⊙ ● ■ △ \	⊙	⊙	⊙ ● ■ △ \
Infer	♥	⊙ ● ■ △ \	⊙	⊙	⊙ ● ■ △ \
Martin	♥	⊙ ● ■ △ \	⊙	⊙	⊙ ● ■ △ \
January		⊙ ● ■ △ \		⊙	⊙ ● ■ △ \
October		⊙ ● ■ △ \			⊙ ● ■ △ \
December		⊙ ● ■ △ \			⊙ ● ■ △ \
China		⊙ ● ■ △ \		⊙	⊙ ● ■ △ \
July	♥	⊙ ● ■ △ \		⊙	⊙ ● ■ △ \
Australia		⊙ ● ■ △ \			⊙ ● ■ △ \
November		⊙ ● ■ △ \			⊙ ● ■ △ \
Munich		⊙ ● ■ △ \			⊙ ● ■ △ \
February		⊙ ● ■ △ \			⊙ ● ■ △ \
September		⊙ ● ■ △ \			⊙ ● ■ △ \



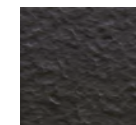
Matt
Finish



Anti Slip Cetus
Finish



Anti Slip Lyda
Finish



Anti Slip Ebano
Finish



Anti Slip Tyber
Finish

♥ Matt
 ⊙ Matt R10 (A+B)
 ● Anti Slip Cetus R11 (A+B+C) V6
 ■ Anti Slip Lyda R11 (A+B+C) V5
 △ Anti Slip Ebano R12 (A+B+C) V5
 \ Anti Slip Tyber R12 (A+B+C) V7

Program

APPEARANCE

Speckled

MATERIAL

Porcelain - Full Body

USAGE

Floors and Walls

SHADE VARIATION

V2 - Light

MOSAICS

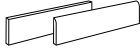
30x30mm Mosaics available in all colours in a Matt finish.

SPECIAL PIECES

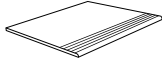
Available in all colours.

For more information contact our sales team.

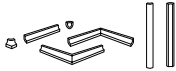
PLINTHS



STEP TREADS



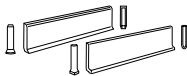
CONVEX AND CONCAVE COVES AND ANGLES



SHOWER CORNER



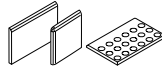
SIT ON AND SIT IN SKIRTING



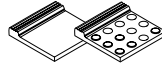
BEVEL AND SQUARE TOP COVES



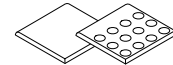
BN, BNC AND BNRC BULLNOSES



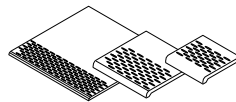
PES AND PE POOL EDGES



BN AND BNRC POOL EDGES



LARGE, MEDIUM AND SMALL STAIR TREADS



ISO 10545 RESULTS

2. DIMENSIONS AND SURFACE QUALITY

Conforms

3. WATER ABSORPTION

< 0.1%

4. FLEXURAL STRENGTH

> 50 N/mm²

6. DEEP ABRASION RESISTANCE

123 mm³

8. LINEAR THERMAL EXPANSION

5.6x10⁻⁶ °C

9. THERMAL SHOCK RESISTANCE

Conforms

10. MOISTURE EXPANSION

< 0.1 mm/m

12. FROST RESISTANCE

Conforms

13. CHEMICAL RESISTANCE

Conforms

14. STAIN RESISTANCE

Conforms

SLIP RESISTANCE (DIN 51130-51097)

Matt R10 (A+B)
Anti Slip Cetus R11 (A+B+C) V6
Anti Slip Lyda R11 (A+B+C) V5
Anti Slip Ebano R12 (A+B+C) V5
Anti Slip Tyber R12 (A+B+C) V7

MANUFACTURER CERTIFICATIONS:

EPD: Available

ISO 14001

For LEED, BREEAM and WELL information, please ask for details. On request tiles can be tested to BS EN 16165:2021. HSE surface roughness and NCS Colour values are also available upon request.

All sizes shown are nominal. Due to the printing process and differing screen values actual tile colours may vary. E&OE.
© Solus Ceramics Limited 2024. 0016a.