

# Raw

3 COLOURS | 3 FINISHES | 3 SIZES



S  
LUS

Wall:  
3UNE102

# Raw

Raw is a porcelain range inspired by the look and feel of concrete slabs. With three different finishes, this range can be used in a variety of circumstances such as walls, floors and exterior cladding.



Wall:  
3UNE102

# Raw



ABOVE  
Floor:  
3UNE101  
Wall:  
3UNE103

RIGHT  
Wall:  
3UNE102  
3UNE101





Albino Matt R9  
3UNE101



Albino Textured  
3UNE101



Albino Textured Anchor  
3UNE101



Dapple Matt R9  
3UNE102



Dapple Textured  
3UNE102



Dapple Textured Anchor  
3UNE102



Coaly Matt R9  
3UNE103

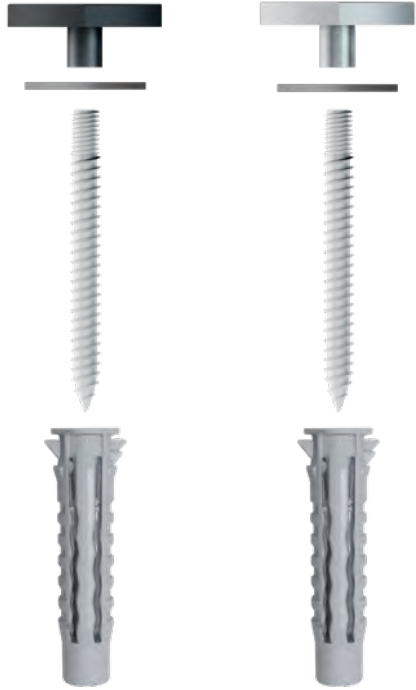


Coaly Textured  
3UNE103



Coaly Textured Anchor  
3UNE103

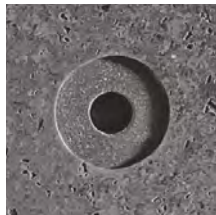
## FIXING KITS



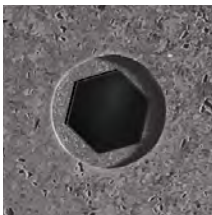
Iron Fixing Kit

Stainless Steel Fixing Kit

## ANCHORS



Textured Anchor\*



Textured Anchor with Iron Bolt Cap\*



Textured Anchor with Stainless Steel Bolt Cap\*

## SIZES AND FINISHES

	600x600 10.8mm	600x1200 10.8mm	900x900 10.8mm
All colours	● ▲ △	● ▲ △	● ▲ △
	● Matt R9	▲ Textured	△ Textured Anchor

## NOTES

Decorative fixings are available. Please call for details.

\*Textured and Textured Anchor finishes are for walls only.

## APPEARANCE

Concrete

## MATERIAL

Porcelain

## USAGE

Floors and Walls

## SHADE VARIATION

V3 - Moderate

## ISO 10545 RESULTS

### 2. DIMENSIONS AND SURFACE QUALITY

Conforms

### 3. WATER ABSORPTION

0.3%

### 4. FLEXURAL STRENGTH

55 N/mm<sup>2</sup>

### 6. DEEP ABRASION RESISTANCE

116 mm<sup>3</sup>

### 8. LINEAR THERMAL EXPANSION

$7 \times 10^{-6}$  °C

### 9. THERMAL SHOCK RESISTANCE

Conforms

### 10. MOISTURE EXPANSION

No rating

### 12. FROST RESISTANCE

Conforms

### 13. CHEMICAL RESISTANCE

Conforms

### 14. STAIN RESISTANCE

Class 5

### SLIP RESISTANCE (DIN 51130)

Matt R9


## MANUFACTURER CERTIFICATIONS:

EPD: Available

ISO 14001

For LEED, BREEAM and WELL information, please ask for details. On request tiles can be tested to BS EN 16165:2021. HSE surface roughness and NCS Colour values are also available upon request.

All sizes shown are nominal. Due to the printing process and differing screen values actual tile colours may vary. E&OE. © Solus Ceramics Limited 2024. 005.

 29%  
Pre-consumer