

Riverstone

4 COLOURS | 2 FINISHES | 4 SIZES



S
O
LUS



Floor:
3PAZ101
Wall:
3PAZ101

Riverstone

Riverstone's puzzle-like pattern creates the elegant aesthetic of terrazzo while its robust composition offers a high-performing surface.



S
O
LUS 

Solus Plus ranges are responsibly sourced in line with the BES 6001 standard.

For more information, [click here](#)

Floor:
3PAZ103

Riverstone



ABOVE
Counter:
3PAZ101
Wall:
3PAZ102



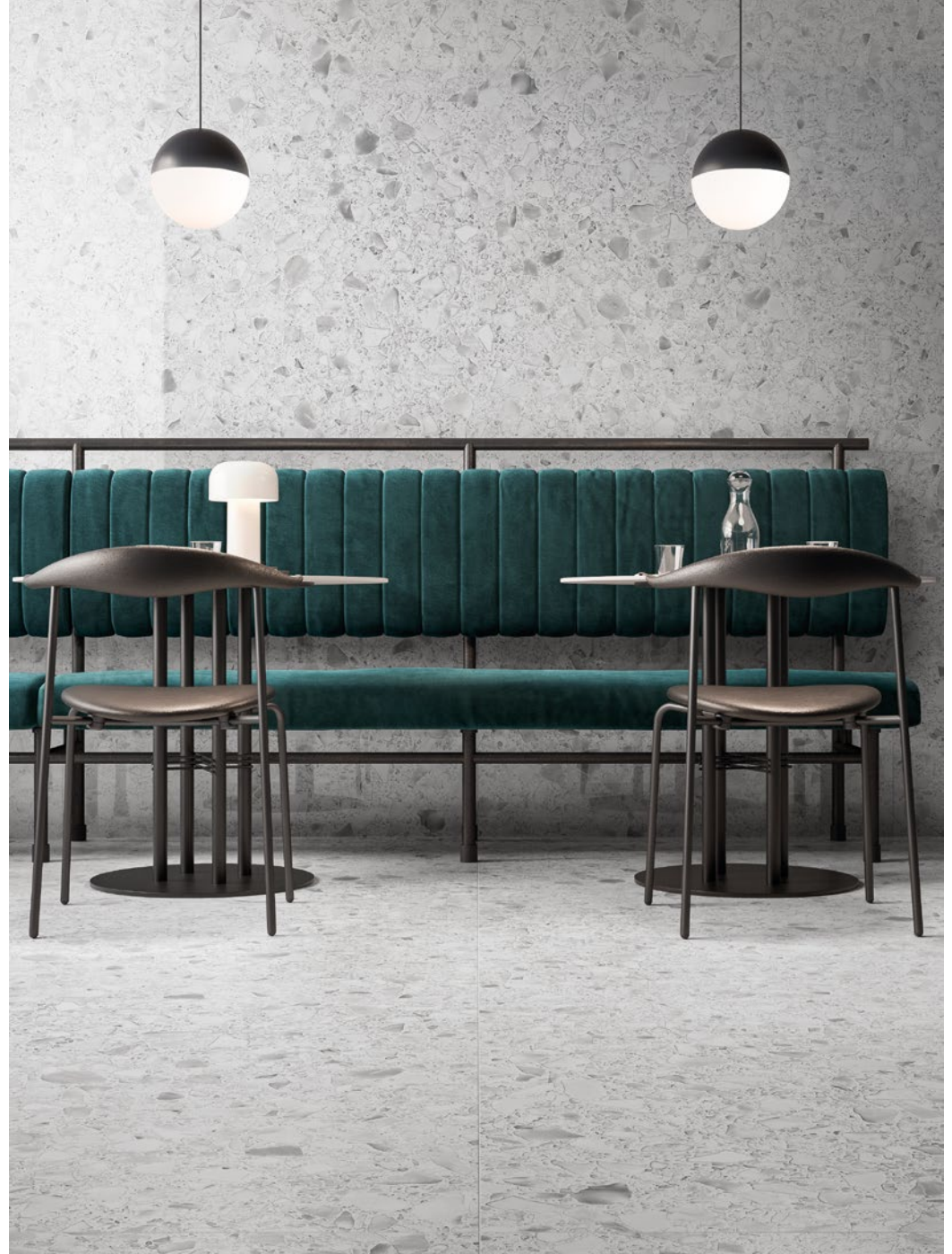
RIGHT
Floor:
3PAZ101
Wall:
3PAZ102
Counter:
3PAZ101

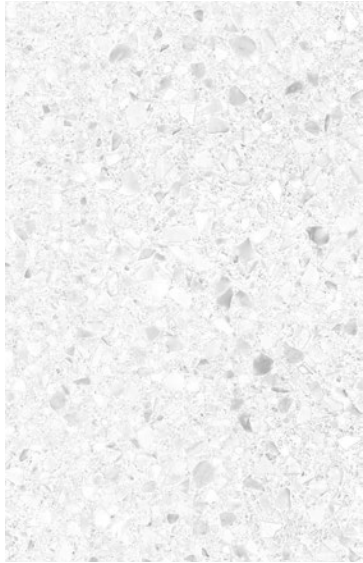
Riverstone



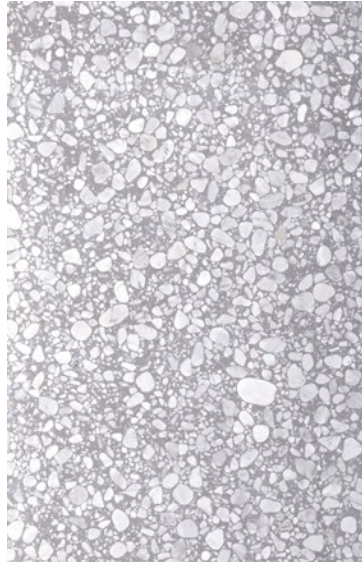
ABOVE
Floor:
3PAZ101

RIGHT
Floor:
3PAZ101
Wall:
3PAZ101

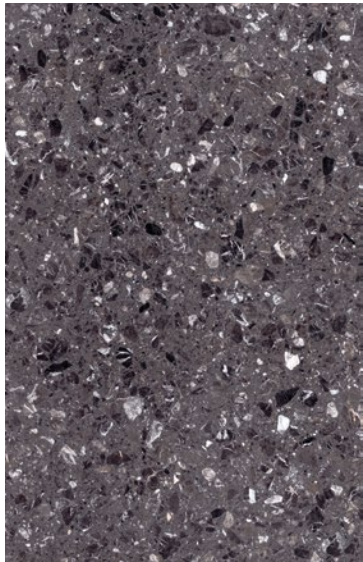




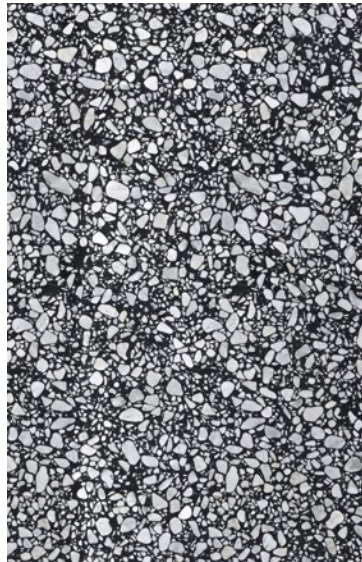
Severnstone
3PAZ101



Deestone
3PAZ103

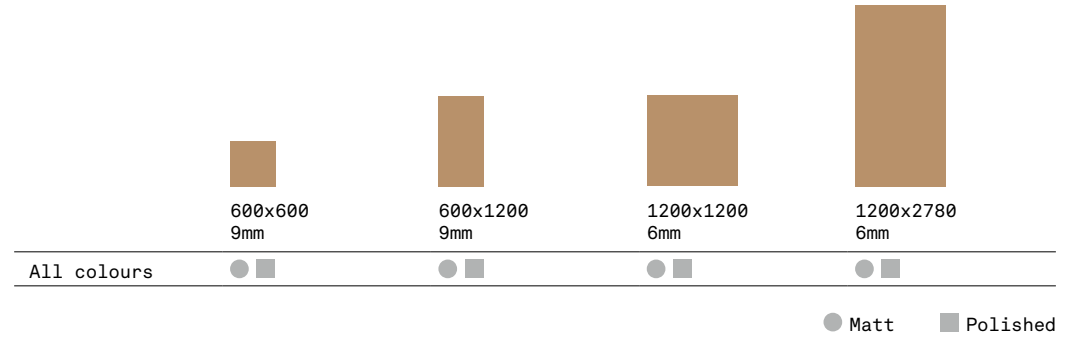


Humberstone
3PAZ102



Thamestone
3PAZ104

SIZES AND FINISHES



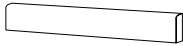
APPEARANCE
Terrazzo

MATERIAL
Porcelain

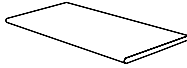
USAGE
Floors and Walls

SPECIAL PIECES
Available in all colours.
For more information contact our sales team.

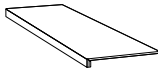
BULLNOSE PLINTH
70x600mm



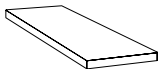
STEP TREAD
300x600mm
300x1200mm



GRADONE
330x1200mm



ANGOLARE
330x1200mm



ISO 10545 RESULTS

2. DIMENSIONS AND SURFACE QUALITY
Conforms

3. WATER ABSORPTION
< 0.1%

4. FLEXURAL STRENGTH
> 45 N/mm²

6. DEEP ABRASION RESISTANCE
< 150 mm³

8. LINEAR THERMAL EXPANSION
6x10⁻⁶ °C

9. THERMAL SHOCK RESISTANCE
No rating

10. MOISTURE EXPANSION
No rating

12. FROST RESISTANCE
Conforms

13. CHEMICAL RESISTANCE
Conforms

14. STAIN RESISTANCE
Conforms

**SLIP RESISTANCE
(DIN 51130-51097)**
Ask for details

CERTIFICATIONS:



EPD: Available
ISO 14001
SASO-Approved

BES 819709

For LEED, BREEAM and WELL information, please ask for details. On request tiles can be tested to BS EN 16165:2021. HSE surface roughness and NCS Colour values are also available upon request. All sizes shown are nominal. Due to the printing process and differing screen values actual tile colours may vary. E&OE. © Solus Ceramics Limited 2025. 005a.

The logo consists of the word "SOLUS" in a large, white, sans-serif font, stacked vertically. To the right of the word, there is a green circular icon containing a white plus sign (+). The background of the entire page is a photograph of large piles of sand or gravel in an industrial setting, with a vertical metal beam in the center.

SOLUS

About Solus Plus

Solus Plus is our new mark of assurance for responsibly sourced products. Built on the rigorous standards of BES 6001, it highlights collections produced by factories that demonstrate industry-leading sustainability across their entire supply chain, from raw material extraction to final delivery.

When specified through Solus, these products can contribute valuable credits toward BREEAM, LEED and WELL certification, helping you meet your environmental targets without compromising on quality or design. Look for the Solus Plus symbol to specify with confidence.

[Visit our website to learn more.](#)

[Back to top](#)