

Topography

20 COLOURS | 8 FINISHES | 9 SIZES | 1 MOSAIC



S
LUS



Floor:
2TOP112
Wall:
2TOP105

Topography

Inspired by the soft and varying hues 'la terra' of the Mediterranean, Topography expresses the aesthetic of simplicity. Neutral shades and grainy finishes soothe the spirit.

This range is certified Carbon Zero.



SOLUS

Solus Plus ranges are responsibly sourced in line with the BES 6001 standard.

For more information, [click here](#)

Floor:
2TOP112
Wall:
2TOP107
Shower:
2TOP101M001

Topography



ABOVE
Floor:
2TOP107

RIGHT
Floor:
2TOP107



ABOVE
Wall:
2TOP108



TOP-White Aged
2TOP107



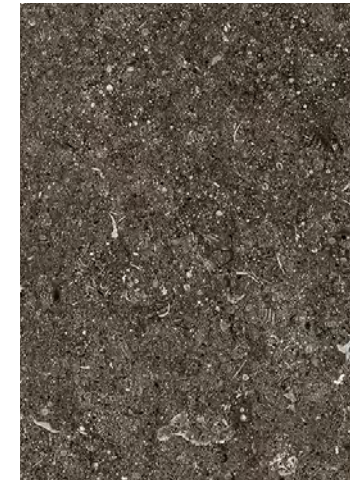
TOP-Cream Aged
2TOP110



TOP-Steel Aged
2TOP113



TOP-Tan Aged
2TOP116



TOP-Mocha Aged
2TOP119



TOP-White Earth
2TOP101



TOP-Cream Earth
2TOP102



TOP-Steel Earth
2TOP103



TOP-Tan Earth
2TOP104



TOP-Mocha Earth
2TOP105



TOP-White Grain
2TOP106



TOP-Cream Grain
2TOP109



TOP-Steel Grain
2TOP112



TOP-Tan Grain
2TOP115



TOP-Mocha Grain
2TOP118



TOP-White Stone
2TOP108



TOP-Cream Stone
2TOP111



TOP-Steel Stone
2TOP114



TOP-Tan Stone
2TOP117



TOP-Mocha Stone
2TOP117

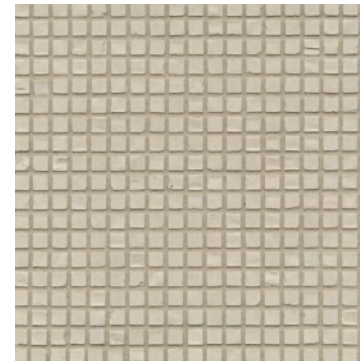
SIZES AND FINISHES

	400x800 9mm	600x1200 6mm	600x1200 9mm	600x1200 20mm	800x800 9mm	1200x1200 6mm	1200x2400 6mm	1200x2800 6mm	1600x3200 6mm
TOP-White Aged	■ □	■	■ □		■ □	■	■	■	
TOP-White Earth	♥	♥	♥		♥	♥	♥	♥	
TOP-White Grain	◆	● \	◆	△	◆	● \	● \		
TOP-White Stone	▲	▲	▲		▲	▲	▲	▲	
TOP-Cream Aged	■ □	■	■ □		■ □	■	■	■	
TOP-Cream Earth	♥	♥	♥		♥	♥	♥	♥	
TOP-Cream Grain	◆	● \	◆	△	◆	● \	● \		●
TOP-Cream Stone	▲	▲	▲		▲	▲	▲	▲	
TOP-Steel Aged	■ □	■	■ □		■ □	■	■	■	
TOP-Steel Earth	♥	♥	♥		♥	♥	♥	♥	
TOP-Steel Grain	◆	● \	◆	△	◆	● \	● \		●
TOP-Steel Stone	▲	▲	▲		▲	▲	▲	▲	
TOP-Tan Aged	■ □	■	■ □		■ □	■	■	■	
TOP-Tan Earth	♥	♥	♥		♥	♥	♥	♥	
TOP-Tan Grain	◆	● \	◆	△	◆	● \	● \		
TOP-Tan Stone	▲	▲	▲		▲	▲	▲	▲	
TOP-Mocha Aged	■ □	■	■ □		■ □	■	■	■	
TOP-Mocha Earth	♥	♥	♥		♥	♥	♥	♥	
TOP-Mocha Grain	◆	● \	◆	△	◆	● \	● \		●
TOP-Mocha Stone	▲	▲	▲		▲	▲	▲	▲	

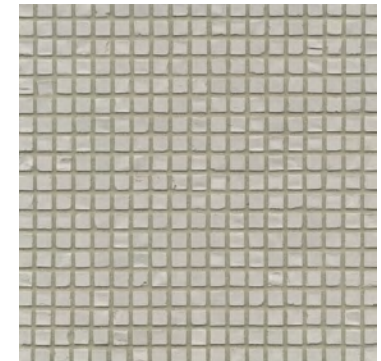
♥ Natural R9 ● Matt R9 \ Matt R10 ◆ Matt R11 (A+B+C) ■ Textured R9 □ Textured R10 ▲ Anti Slip R10 (A+B) △ Anti Slip R11 (A+B+C)



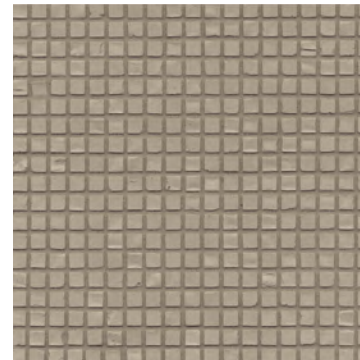
TOP-White Mosaic
2TOP101M001
300x300x3mm mesh
Matt finish



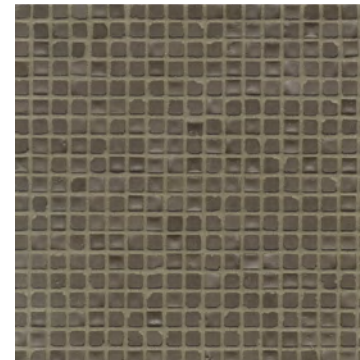
TOP-Cream Mosaic
2TOP102M002
300x300x3mm mesh
Matt finish



TOP-Steel Mosaic
2TOP103M003
300x300x3mm mesh
Matt finish



TOP-Tan Mosaic
2TOP104M004
300x300x3mm mesh
Matt finish



TOP-Mocha Mosaic
2TOP105M005
300x300x3mm mesh
Matt finish

Wall:
2TOP101M001

Topography

APPEARANCE

Limestone

MATERIAL

Porcelain

USAGE

Floors and Walls

SHADE VARIATION

V2 - Light

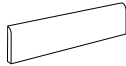
SPECIAL PIECES

Available in all colours.

For more information contact our sales team.

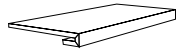
BATTISCOPIA

46x600mm



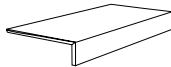
GRADINO

330x1200x30mm



ELEMENTO ELLE

200x400x60mm



ISO 10545 RESULTS

2. DIMENSIONS AND SURFACE QUALITY

Conforms

3. WATER ABSORPTION

≤ 0.08%

4. FLEXURAL STRENGTH

50-52 N/mm²

6. DEEP ABRASION RESISTANCE

140 mm³

8. LINEAR THERMAL EXPANSION

No rating

9. THERMAL SHOCK RESISTANCE

Conforms

10. MOISTURE EXPANSION

No rating

12. FROST RESISTANCE

Conforms

13. CHEMICAL RESISTANCE

Conforms

14. STAIN RESISTANCE

Conforms

SLIP RESISTANCE (DIN 51130-51097)

Natural R9

Matt R9, R10, R11 (A+B+C)

Textured R9, R10

Anti Slip R10 (A+B),

Anti Slip R11 (A+B+C)

CERTIFICATIONS:



EPD: Available

ISO 14001

SASO-Approved

For LEED, BREEAM and WELL information, please ask for details. On request tiles can be tested to BS EN 16165:2021. HSE surface roughness and NCS Colour values are also available upon request. All sizes shown are nominal. Due to the printing process and differing screen values actual tile colours may vary. E&OE. © Solus Ceramics Limited 2025. 006.



Solus Plus ranges are responsibly sourced in line with the BES 6001 standard for the responsible sourcing of construction products.

BIRMINGHAM
Unit 1 Cole River Park
Warwick Road B11 2QX

LONDON
80 Clerkenwell Road
EC1M 5RJ

MANCHESTER
14 Kennedy Street
M2 4BY

[solusceramics.com](https://www.solusceramics.com)
+44 (0)121 753 0777
sales@solusceramics.com

The logo consists of the word "SOLUS" in a large, white, sans-serif font, stacked vertically. To the right of the middle letter "O" is a green circular icon containing a white plus sign (+).

S
O
LUS

About Solus Plus

Solus Plus is our new mark of assurance for responsibly sourced products. Built on the rigorous standards of BES 6001, it highlights collections produced by factories that demonstrate industry-leading sustainability across their entire supply chain, from raw material extraction to final delivery.

When specified through Solus, these products can contribute valuable credits toward BREEAM, LEED and WELL certification, helping you meet your environmental targets without compromising on quality or design. Look for the Solus Plus symbol to specify with confidence.

[Visit our website to learn more.](#)

[Back to top](#)