

Transfix

8 COLOURS | 3 FINISHES | 4 SIZES | 1 MOSAIC



SOS
LUS

Floor:
3AGA509

Transfix

Transfix is a revolutionary range that has been developed to meet the needs of modern interior and exterior architecture. The full bodied porcelain tiles are available in a number of large format sizes, intriguing colours and three finishes.



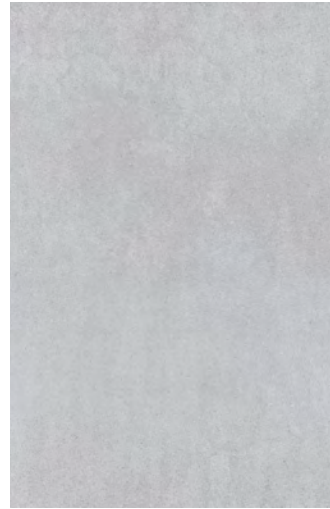
Floor:
3AGA505



Floor:
3AGA512
Wall:
3AGA507



Brander
3AGA505



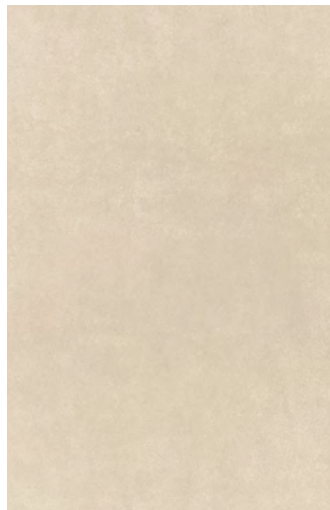
Straton
3AGA506



Gainor
3AGA507



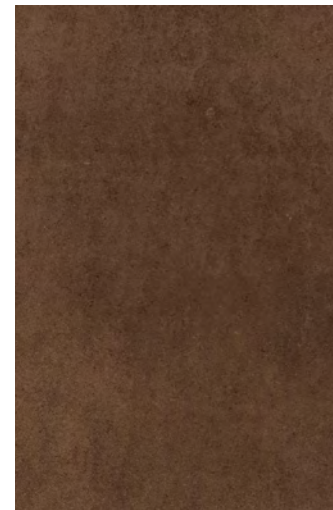
Bettison
3AGA508



Zengen
3AGA510



Gelinas
3AGA511



Bruman
3AGA512







Sandidge
3AGA509

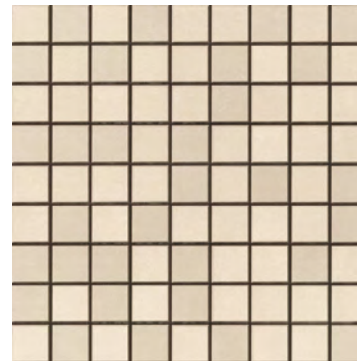


Wall:
3AGA511

SIZES AND FINISHES

				
	300x600 10.5mm	600x600 10.5mm	600x1200 10.5mm	1200x1200 10.5mm
All colours	♥ ■ △	♥ ■ △	♥ ■	♥ ■
		♥ Natural R10	■ Polished	△ Textured R11 (A+B+C)

MOSAICS



Mosaic A

300x300mm

Natural finish and Natural/Polished finish.

Available in all colours

APPEARANCE

Concrete

MATERIAL

Porcelain

USAGE

Floors and Walls

SHADE VARIATION

V2 - Light

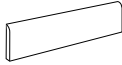
SPECIAL PIECES

Available in all colours.

For more information contact our sales team.

BATTISCOPIA

95x600mm



GRADONE STEP

1200x325mm



ISO 10545 RESULTS

2. DIMENSIONS AND SURFACE QUALITY

Conforms

3. WATER ABSORPTION

0.5%

4. FLEXURAL STRENGTH

50 N/mm²

6. DEEP ABRASION RESISTANCE

140mm³

8. LINEAR THERMAL EXPANSION

≤ 7x10⁻⁶ °C

9. THERMAL SHOCK RESISTANCE

Conforms

10. MOISTURE EXPANSION

No rating

12. FROST RESISTANCE

Conforms

13. CHEMICAL RESISTANCE

Conforms

14. STAIN RESISTANCE

Conforms

SLIP RESISTANCE (DIN 51130-51097)

Natural R10

Textured R11 (A+B+C)

MANUFACTURER CERTIFICATIONS:



EPD: Available

ISO 14001

For LEED, BREEAM and WELL information, please ask for details. On request tiles can be tested to BS EN 16165:2021. HSE surface roughness and NCS Colour values are also available upon request. All sizes shown are nominal. Due to the printing process and differing screen values actual tile colours may vary. E&OE. © Solus Ceramics Limited 2023. 005b.



≤ 44.4%

Pre-consumer