

Transpose

7 COLOURS | 2 FINISHES | 5 SIZES | 1 MOSAIC



S
O
L
U
S

Floor:
3SAL101

Transpose

Transpose is a carefully crafted neutral range featuring a variety of shades inspired by warm and cool environments. A honed semi-gloss finish and a beautifully curved Anti Slip finish offer dynamic opportunities in both interior and exterior locations.



Floor:
3SAL104

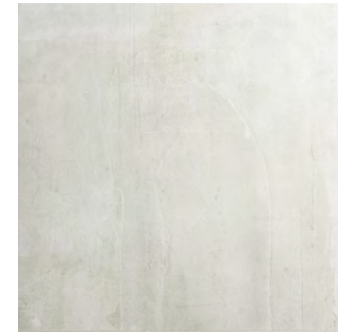
Transpose



Floor:
3SAL106
Wall:
3SAL105



Altered
3SAL107



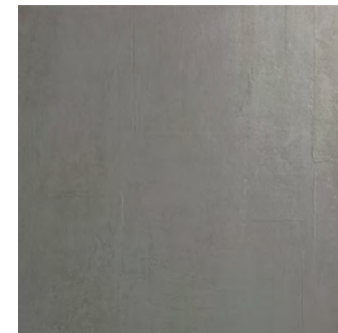
Reform
3SAL104



Scaled
3SAL103



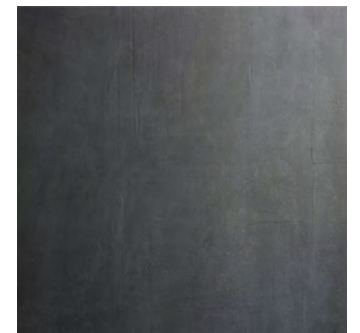
Invert
3SAL102



Convert
3SAL105



Switch
3SAL101








Tailor
3SAL106



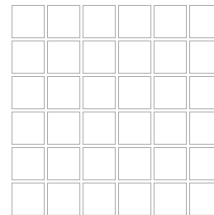
Floor:
3SAL104

SIZES AND FINISHES

					
	100x600 8mm	150x600 8mm	300x600 8mm	600x600 8mm	600x1200 8mm
All colours	⊘ △	⊘ △	⊘ △	⊘ △	⊘ △

⊘ Honed R10 △ Anti Slip R11 (A+B+C)

MOSAICS



Mosaic

Available in all colours

300x300x8mm (50x50 Chips)

Honed R10

NOTES

To avoid lippage we recommend the use of self-levelling spacers

Transpose

APPEARANCE
Slate

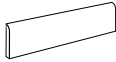
MATERIAL
Porcelain

USAGE
Floors and Walls

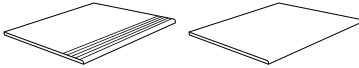
SHADE VARIATION
V2 - Light

SPECIAL PIECES
Available in all colours.
For more information contact our sales team.

BATTISCOPIA
90x600mm



GRADINO STEP
300x600mm



ISO 10545 RESULTS

2. DIMENSIONS AND SURFACE QUALITY
Conforms

3. WATER ABSORPTION
0.08%

4. FLEXURAL STRENGTH
49 N/mm²

6. DEEP ABRASION RESISTANCE
140mm³

8. LINEAR THERMAL EXPANSION
6.5x10⁻⁶ °C

9. THERMAL SHOCK RESISTANCE
Conforms

10. MOISTURE EXPANSION
No rating

12. FROST RESISTANCE
Conforms

13. CHEMICAL RESISTANCE
Conforms

14. STAIN RESISTANCE
Conforms

**SLIP RESISTANCE
(DIN 51130-51097)**
Honed R10
Anti Slip R11 (A+B+C)

MANUFACTURER CERTIFICATIONS:



ecovadis



EPD: Available
ISO 14001

For LEED, BREEAM and WELL information, please ask for details. On request tiles can be tested to BS EN 16165:2021. HSE surface roughness and NCS Colour values are also available upon request. All sizes shown are nominal. Due to the printing process and differing screen values actual tile colours may vary. E&OE. © Solus Ceramics Limited 2024. 006.

Up to 40%
Pre-consumer

**S
O
L
U
S**

BIRMINGHAM
Unit 1 Cole River Park
Warwick Road B11 2QX

LONDON
80 Clerkenwell Road
EC1M 5RJ

MANCHESTER
14 Kennedy Street
M2 4BY

solusceramics.com
+44 (0)121 753 0777
sales@solusceramics.com